




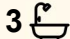

14A Sandringham Street, Mansfield

WALK TO MANSFIELD HIGH FROM YOUR NEAR NEW HOME FROM ONE OF MANSFIELD'S BEST STREETS

Backing directly onto Mansfield State High, this near-new Hamptons-style showpiece sits proudly on one of Mansfield's finest streets. Flawlessly designed with indulgent family living in mind, this rendered and timber-clad residence offers a sprawling layout across two refined levels. Showcasing stylish open plan living, a radiant sunroom, and a chic modern kitchen, this home is the ultimate haven for those who love to entertain or simply enjoy relaxed everyday living. With six oversized bedrooms, including two with their own private ensuites and a clever kitchenette layout for multigenerational ease, it delivers luxurious living with the versatility modern families need. The picture-perfect backyard features a lush, low maintenance garden inspired by cottage charm - a peaceful setting to unwind. All this within a leisurely stroll to elite schools, parks, shops, and transport, with easy access to major motorways and Westfield Mt Gravatt.

Highlights:

- Showstopping Hamptons-style residence in one of Mansfield's

6  3  2 

FOR SALE

For Sale Now

VIEW

Sat 11th Apr @ 11:00AM - 11:30AM

AGENTS

Kosma Comino
0438 365 222
kosmacomino@ljhpp.com.au

Bailey Atherton
0410 724 362
baileyatherton@ljhpp.com.au

AGENCY

LJ Hooker Property Partners
07 3344 0288

All information contained therein is gathered from relevant third parties sources.
We cannot guarantee or give any warranty about the information provided.
Interested parties must rely solely on their own enquiries.



- most prestigious streets, backing onto Mansfield State High
- Expansive open plan layout with stylish lounge and dining areas plus light-filled tiled sunroom for additional entertaining space
- Unique six-bedroom configuration with two modern ensuites, four walk-in robes, and a kitchenette ideal for extended family living
- Neatly landscaped, fully fenced backyard with charming cottage-style gardens and lush lawn for effortless outdoor enjoyment
- Walk to schools, buses, parks, local shops and childcare, with swift motorway access to the city and minutes from Westfield Mt Gravatt

Positioned within the prestigious Mansfield State High and Mansfield State School catchments, this address offers phenomenal walkability to almost everything. Buses, parks, local shops, childcare, and schools are all within easy reach - with this beautiful street backing directly onto Mansfield High itself. Enjoy the convenience of being only minutes from Westfield Mt Gravatt and key motorways, making city commutes or weekend outings completely effortless. This tightly held enclave is ideal for families seeking both lifestyle and location.

- 260 m to bus stop
- 500 m to Broadwater Park
- 550 m to Mansfield State High School
- 750 m to Wishart Shopping Village
- 1.1 km to Mansfield State School
- 1.4 km to Goodstart Early Learning Wishart
- 3.9 km to Westfield Mt Gravatt

Set along a leafy, tightly held suburban street, this eye-catching residence immediately impresses with its sleek Hamptons-style facade. Rendered and timber-clad with neat, manicured border gardens and lush lawns, it's framed to perfection. A luminous portico with a quaint gabled roof welcomes guests in style, while driveway parking and a double garage offer practical convenience.

A sense of European chic flows throughout the home's sprawling interior. The entrance hall leads into a vast open plan lounge and dining area, where trendy timber-look flooring, crisp white walls, downlights, and ducted air conditioning come together to create a space that's both sophisticated and relaxed. To the rear, a large, tiled sunroom provides an inviting spot to entertain guests or soak up the warmth of the afternoon sun while enjoying a quiet drink or favourite book.

Sitting opposite the living area is a radiant modern kitchen that's been crafted for culinary ease. Stone countertops gleam under soft lighting, while a large island bench and dining bar provide ample prep and serving space. A gas stovetop and spacious walk-in pantry provide everything you need to cook and entertain with ease.

Beyond the sunroom lies a tranquil backyard oasis - fully fenced and thoughtfully designed with lush lawns and a neatly arranged cottage-style garden. Whether it's a casual dinner under the stars or a weekend unwind in the fresh air, this easy-care space is made for quiet enjoyment without the upkeep.

The residence has been designed to accommodate large or multigenerational families with ease. An enormous ground floor bedroom features a fan, sophisticated Plantation shutters, walk-in robe and sleek private ensuite - perfect for elderly relatives or overnight guests. Upstairs, five more generously sized bedrooms include one with a built-in robe, two with walk-in robes, and another with its own kitchenette - ideal as a teen retreat, home business space, or self-contained living zone.

The luxurious master suite is a standout, offering not only a stylish

ensuite with dual vanity and floor-to-ceiling tiles but also two walk-in robes - one of which could serve perfectly as a nursery, dressing room, or private office. A modern family bathroom with separate shower, bathtub, and water closet completes the upper level.

Additional Features:

- Solar system with 20 solar panels and 8 Kw converter
- Three phase power
- Ducted air conditioning throughout
- Enduro Shield protection on all shower screens
- Internal laundry
- Alarm system
- Extra data points for good internet coverage
- Downstairs powder room
- Four extra storage cupboards

This is a rare opportunity to secure a stunning, near-new Hamptons-style residence in a tightly held Mansfield street. Combining space, style, and supreme versatility just metres from top schools and amenities, it's the perfect family upgrade.

Contact Kosma Comino or Bailey Atherton today to arrange your inspection or register to bid at auction.

All information contained herein is gathered from sources we consider to be reliable. However, we cannot guarantee or give any warranty about the information provided and interested parties must solely rely on their own enquiries.

Desma Pty Ltd with Sunnybank Districts P/L T/A LJ Hooker Property Partners ABN 33 628 090 951 / 21 107 068 020

MORE DETAILS

Property ID	B41RF4R
Property Type	House
Land Area	404 m2
Including	Air Conditioning Ducted Heating Toilets (4) Alarm Balcony Outdoor Entertaining Built-in-Robes Fully Fenced Solar Panels

Kosma Comino 0438 365 222

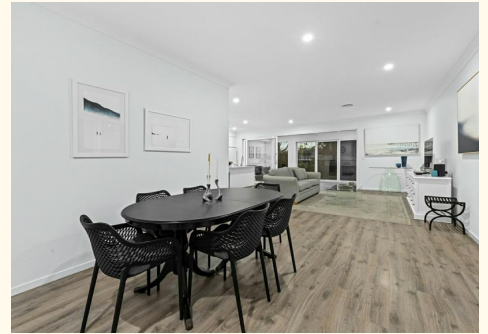
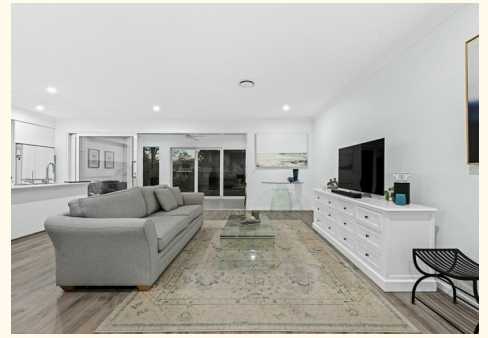
Partner & Agent/Independent Contractor |
kosmacomino@ljhpp.com.au

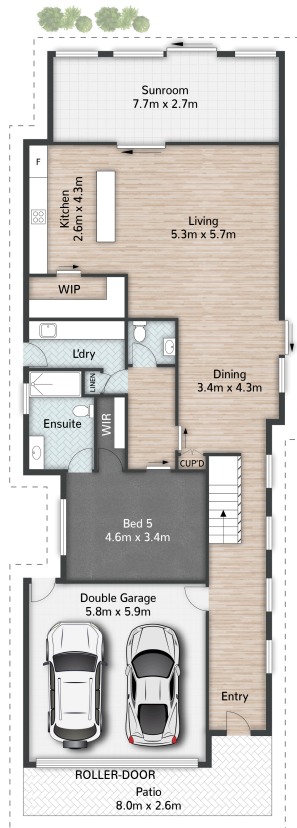
Bailey Atherton 0410 724 362

Lead Agent "The Gillespie Team" | baileyatherton@ljhpp.com.au

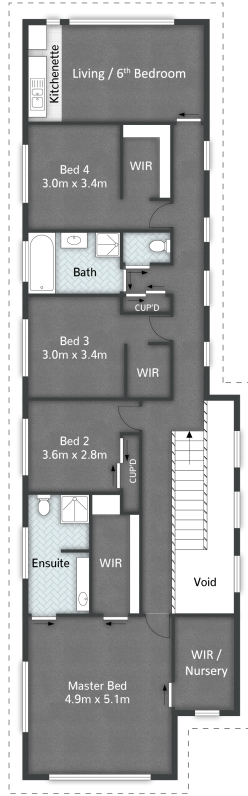
LJ Hooker Property Partners 07 3344 0288

25 Pinelands Road, SUNNYBANK HILLS QLD 4109
propertypartners.ljhooker.com.au | sunnybankhills@ljhpp.com.au

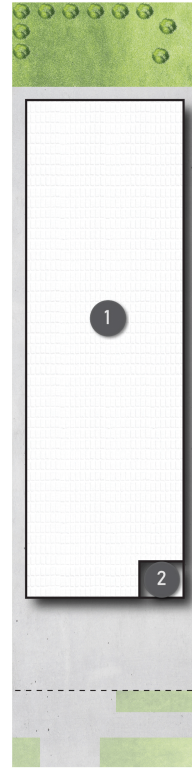




GROUND FLOOR



FIRST FLOOR



Sandringham Street

LEGEND
1 RESIDENCE
2 PORCH



14A Sandringham Street **MANSFIELD**

6 | 3.5 | 2 | 366m²

LJ Hooker Property Partners

All dimensions are approximate; they are subject to errors and inaccuracies and no liability will be accepted. Plans are shown for marketing purposes only.

All information contained therein is gathered from relevant third parties sources. We cannot guarantee or give any warranty about the information provided. Interested parties must rely solely on their own enquiries.

LJ Hooker