



8/22 Jensen Street, Manoora

## Smart Investment Opportunity Minutes from Cairns CBD

Welcome to 8/22 Jensen Street, Manoora. Positioned on the first floor of this 2 storey complex, the unit features two generous sized bedrooms, plenty of storage options, air conditioning, an internal laundry and has tiled flooring throughout.

This solid unit would make a great addition to any investment portfolio, or is perfect for those looking to secure an entry level unit.

### Features:

- Generous kitchen with ample storage options
- Designated under cover parking in complex
- Open plan living/dining area
- Modern bathroom
- Internal laundry
- Tiled flooring throughout
- Communal outdoor gardens and lawns

Conveniently located within walking distance to Piccones Village, which includes an IGA, doctors, chemist, physio, gym and yoga studio, post office and various takeaway/fast food options. The property is only minutes to the prestigious Edge Hill Hub, Cairns International and Domestic Airports and Cairns CBD.

All information contained therein is gathered from relevant third parties sources. We cannot guarantee or give any warranty about the information provided. Interested parties must rely solely on their own enquiries.

2  1  1 

### FOR SALE

Offers Over \$359,000

### VIEW

Sat 13th Jun @ 12:00PM - 12:30PM

### AGENTS

Kayla Pennefather  
0429 364 945  
kaylap@ljheh.com.au

### AGENCY

LJ Hooker Cairns Edge Hill  
(07) 4053 9999

 LJ Hooker

## MORE DETAILS

Property ID	3SV0FMB
Property Type	Unit
Land Area	64 m2
Including	Air Conditioning Built-in-Robes

**Kayla Pennefather 0429 364 945**

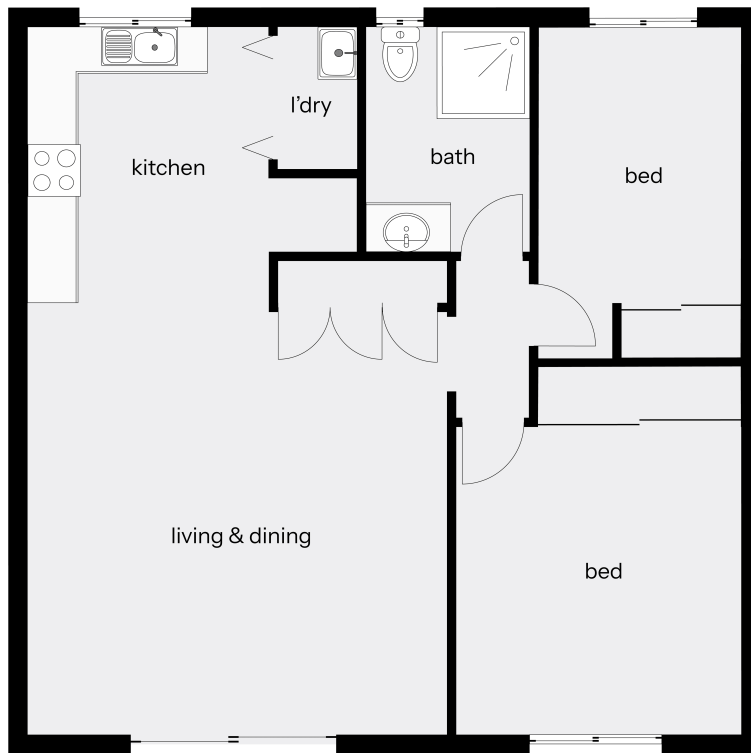
Sales Consultant | [kaylap@ljheh.com.au](mailto:kaylap@ljheh.com.au)

**LJ Hooker Cairns Edge Hill (07) 4053 9999**

81 - 83 Woodward Street, EDGE HILL QLD 4870

[cairnsedgehill.ljhooker.com.au](http://cairnsedgehill.ljhooker.com.au) | [cairnsedgehill@ljheh.com.au](mailto:cairnsedgehill@ljheh.com.au)





Whilst LJ Hooker Edge Hill has made every effort to ensure the accuracy of the floorplan contained here, measurements are approximate and no responsibility is taken for any error, omission or mis-statement. This plan is for illustration purposes only.