


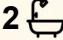
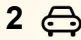
6 Briar Close, Mango Hill

700m² OF LAND - EASY STROLL TO TRAIN STATION

Location, location, location! It doesn't get any better than this. This neat family home is just a three minute walk to the Mango Hill train station and an easy walk to Westfield North Lakes, restaurants, tavern, medical facilities, parks, walking/bike tracks and much much more. It's also close to both primary and secondary schools and it has easy access to the highway. It's tucked away in a quiet cul-de-sac with no through traffic.

Set on a big block of land the home has recently been refurbished with new carpets and fresh paint.

- Modern air conditioners
- Separate living zones
- Galley style kitchen
- Built in bedrooms
- Modern bathrooms
- Large outdoor space
- Front patio
- Security screens
- Side access for caravan or boat or trailer

4  2  2 

FOR SALE

Please Call

AGENTS

Simon Booker
0403 340 240
sbooker@ljh-kallangur.com.au

Liam Booker
0403 340 246
lbooker@ljh-kallangur.com.au

AGENCY

LJ Hooker North Lakes | Mango Hill
(07) 3491 7733

All information contained therein is gathered from relevant third parties sources.
We cannot guarantee or give any warranty about the information provided.
Interested parties must rely solely on their own enquiries.

 **LJ Hooker**

- **** The rental appraisal is \$700 per week.

The current owners have had a change of plans and are keen to sell.
Offers close Friday 31 October, 2025.

MORE DETAILS

Property ID	D05HF3
Property Type	House
Land Area	700 m2
Including	Ensuite
	Air Conditioning
	Built-in-Robes
	Fully Fenced

Simon Booker 0403 340 240

Salesperson | sbooker@ljh-kallangur.com.au

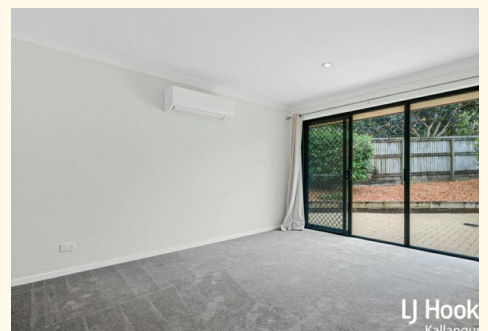
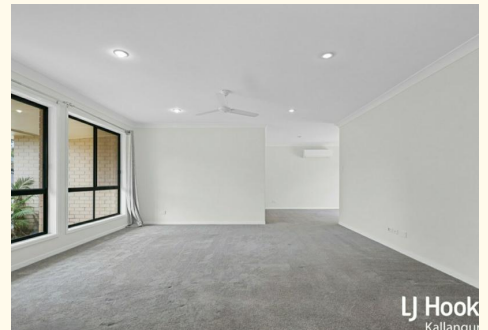
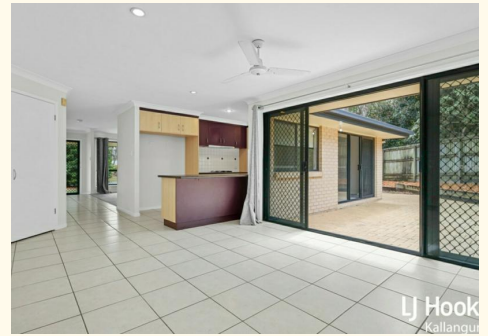
Liam Booker 0403 340 246

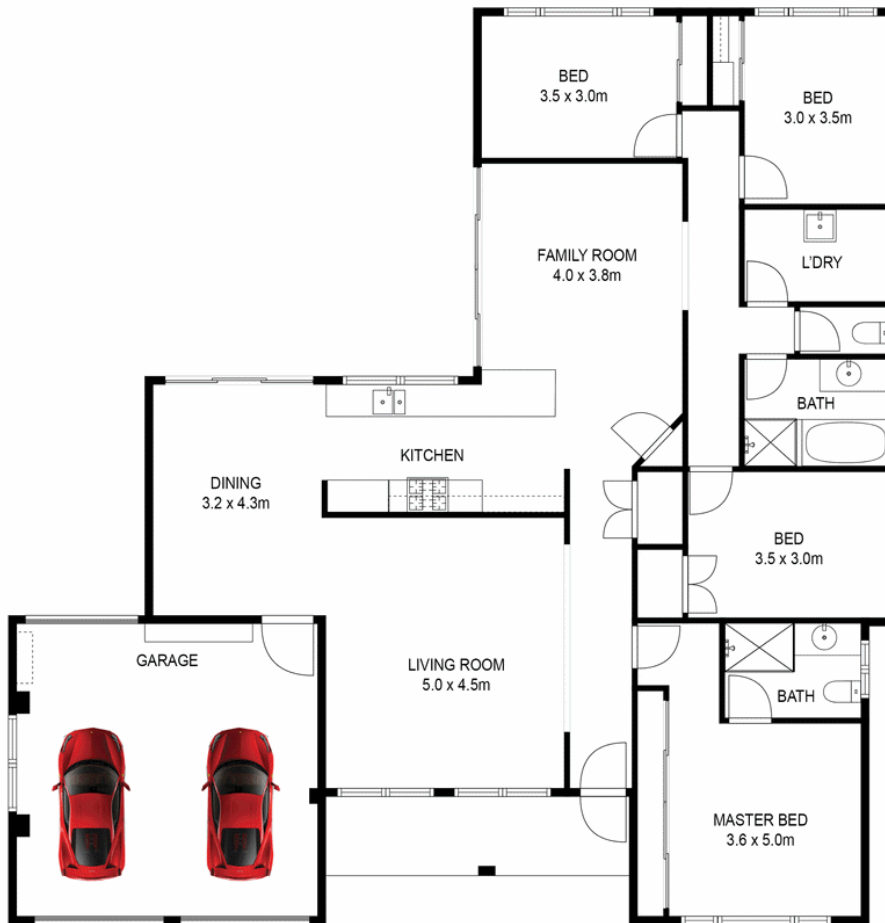
Salesperson | lbooker@ljh-kallangur.com.au

LJ Hooker North Lakes | Mango Hill (07) 3491 7733

1427 Anzac Avenue, KALLANGUR QLD 4503

northlakes.ljhooker.com.au | ljhooker@ljh-northlakes.com.au





Whilst every attempt has been made to ensure accuracy, Floor Plans are representative and should be used as a guide only