


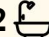

2/52 Bonar Street, Maitland

## The Benchmark for Boutique Villa Living!

The crown jewels of the Enclave Development, this exceptional masterfully built and architecturally designed villa redefine low-maintenance luxe. Offering three generous bedrooms, two beautifully appointed bathrooms and an uncompromising commitment to quality, every element of this build has been carefully considered to deliver a home of timeless style, substance and sophistication.

Stepping inside, you're immediately welcomed by rich hardwood parquetry flooring and bespoke wainscoting, setting the tone for the calibre that continues throughout. Beyond, and into the heart of the home the parquetry flooring becomes an unmistakable centrepiece, beautifully complemented by crisp neutral interiors, plantation shutters and soaring ceilings that enhance the sense of space and natural light. The expansive open plan living and dining domain is warm, elegant and effortlessly inviting, flowing seamlessly to a stunning designer kitchen featuring stone benchtops, shaker cabinetry, induction cooking, dual ovens, a warming drawer and exceptional storage.

The sleeping arrangements comprises of three generously proportioned bedrooms, each appointed with plush carpeting,

3  2  2 

**FOR SALE**  
\$995,000 to \$1.050M

**VIEW**  
By Appointment

**AGENTS**  
Todd Fisher  
0438 592 920  
tfisher.maitland@ljhooker.com.au

Ben Cotton  
0434 638 822  
bcotton.maitland@ljhooker.com.au

**AGENCY**  
LJ Hooker Maitland  
(02) 4933 5511

All information contained therein is gathered from relevant third parties sources.  
We cannot guarantee or give any warranty about the information provided.  
Interested parties must rely solely on their own enquiries.

 **LJ Hooker**

plantation shutters and built-in robes. The impressive master suite enjoys a walk-in wardrobe, beautifully finished ensuite and direct access to the rear verandah, while the main bathroom mirrors the same level of craftsmanship with floor-to-ceiling tiling and premium fixtures throughout.

Extending naturally from the living area, the fully covered Wood Evo entertaining deck provides the perfect setting to relax or entertain while taking in the peaceful semi-rural outlook, with zip track style blinds on the corner position for increase privacy & weatherproofing. The secure, fully fenced internal yard offers ample room for children and pets to enjoy, while the property's generous landholding of approximately 830sqm extends to the rear treelined boundary, providing space rarely found.

Every detail of this remarkable residences has been thoughtfully executed, creating a home that balances luxury finishes with everyday comfort. Offering a level of craftsmanship seldom seen in today's market, this is an opportunity to secure one of the Enclave's finest homes-an inspection will leave a lasting impression.

Proudly marketed by LJ Hooker Maitland, please call exclusive agents Todd Fisher 0438 592 920, Ben Cotton 0434 638 822 & Jack Fisher 0438 165 825 - 7 days for all inspections & further information.

All information contained herein is gathered from sources we deem to be reliable. However, we cannot guarantee its accuracy and interested persons should rely on their own enquiries.

## MORE DETAILS

Property ID	1FAPF6H
Property Type	Villa
Land Area	830 m2
Including	Ensuite
	Air Conditioning
	Toilets (2)
	Built-in-Robes
	Close to Schools
	Close to Shops
	Close to Transport
	Prestige Homes

### Todd Fisher 0438 592 920

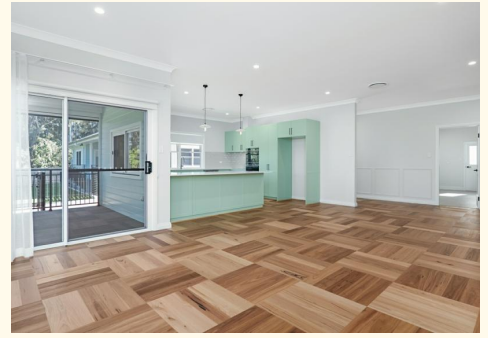
Salesperson | [tfisher.maitland@ljhooker.com.au](mailto:tfisher.maitland@ljhooker.com.au)

### Ben Cotton 0434 638 822

Licensed Real Estate Agent & Auctioneer |  
[bcotton.maitland@ljhooker.com.au](mailto:bcotton.maitland@ljhooker.com.au)

### LJ Hooker Maitland (02) 4933 5511

24 Ken Tubman Drive, MAITLAND NSW 2320  
[maitland.ljhooker.com.au](http://maitland.ljhooker.com.au) | [maitland@ljhooker.com.au](mailto:maitland@ljhooker.com.au)



# 2/52 Bonar Street, Maitland



**Total: 126 m2**

1st Floor: 126 m2

Excluded Areas: Garage: 35 M2, Verandah: 4 M2, Alfresco Deck: 41 M2,  
Walls: 10 m2

ALL SIZES, DIMENSIONS & ELEMENTS ARE APPROXIMATE & INTENDED FOR VIEWING PURPOSES ONLY  
© 2025 Rite Angle Media - All rights reserved  
www.riteanglemedia.com.au

**LJ Hooker**  
Maitland

All information contained therein is gathered from relevant third parties sources.  
We cannot guarantee or give any warranty about the information provided.  
Interested parties must rely solely on their own enquiries.

**LJ Hooker**