



142 Elgin Street, Maitland

MODERN COMFORT MEETS CENTRAL CONVENIENCE!!!

Perfectly positioned for lifestyle and convenience, this charming two-bedroom cottage sits just a short stroll from Maitland Park, the local pool, sporting facilities, train station, and the vibrant CBD. Offering a blend of traditional appeal and modern comfort, the home features a welcoming return verandah and sits proudly on a level, fenced corner block.

Inside, you'll find a well-presented laminate kitchen with ample cupboard and bench space, an updated bathroom with separate shower and bath, and an open-plan living area kept comfortable year-round with split system reverse-cycle air conditioning. The practical layout makes the most of every inch of space, creating a home that feels both cosy and functional.

A rear carport provides off-street parking and can also double as an undercover entertaining area-perfect for casual weekend gatherings.

An excellent opportunity for investors, this property is currently leased to a reliable long-term tenant who would be open to staying on beyond the current agreement. Whether you're looking to expand your portfolio or secure a low-maintenance home in a central Maitland

2 🏠 1 🚿 0 🚗

FOR SALE
\$595,000

AGENTS

Kane Bradley
0423 525 335
kbradley.maitland@ljhooker.com.au

AGENCY

LJ Hooker Maitland
(02) 4933 5511

All information contained therein is gathered from relevant third parties sources.
We cannot guarantee or give any warranty about the information provided.
Interested parties must rely solely on their own enquiries.

 **LJ Hooker**

location, this property offers great value, strong rental appeal, and undeniable convenience.

Proudly marketed by LJ Hooker Maitland, please call exclusive agent Kane Bradley 0423 525 335 7 days for all inspections & further information.

All information contained herein is gathered from sources we deem to be reliable. However, we cannot guarantee its accuracy and interested persons should rely on their own enquiries.

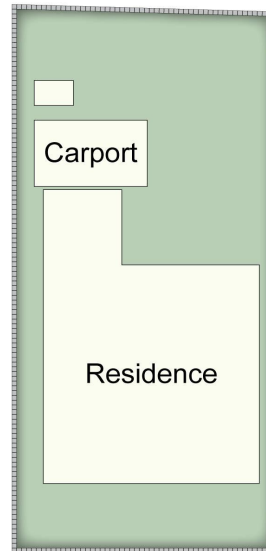
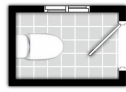
MORE DETAILS

Property ID	1EJUF6H
Property Type	House
Land Area	322 m2

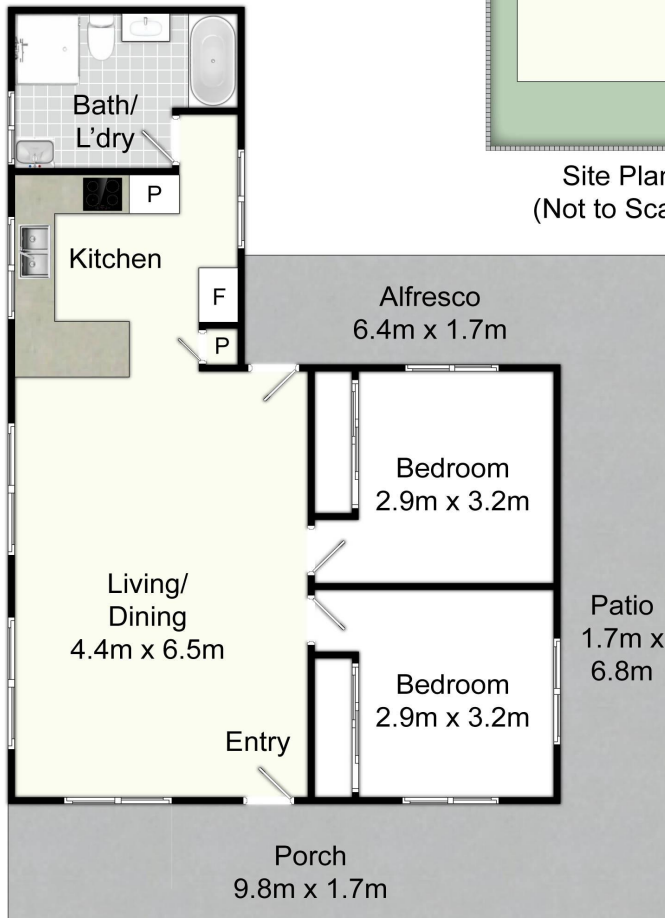
Kane Bradley 0423 525 335
Director | kbradley.maitland@ljhooker.com.au

LJ Hooker Maitland (02) 4933 5511
24 Ken Tubman Drive, MAITLAND NSW 2320
maitland.ljhooker.com.au | maitland@ljhooker.com.au





Site Plan
(Not to Scale)



142 Elgin St, Maitland

All information contained herein is gathered from sources we deem reliable. However, we cannot guarantee its accuracy and act as a messenger only in passing on the details. Interested parties should rely on their own inquiries and the contract for sale. The floor plans are artist's impressions only. The site plan is not to scale.

 **LJ Hooker**
Maitland

All information contained therein is gathered from relevant third parties sources. We cannot guarantee or give any warranty about the information provided. Interested parties must rely solely on their own enquiries.

 **LJ Hooker**