

Magenta, 1906 White Haven Avenue

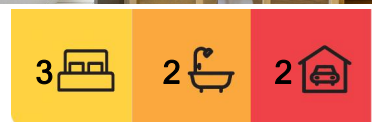
By the Beach!

Set within a small complex with two car spaces on title at your front door and within a short stroll to the Beach is this quality built Magenta terrace.

The ultimate weekender, occupy full time or the perfect set and forget investment with options for permanent rental, short term or return to the Pullman Hotel.

Consisting of two levels, the downstairs level featuring:

- * Open planned living, dining, and kitchen area.
- * Kitchen with island bench and stainless appliances including natural gas cooking and dishwasher.
- * Living / dining area adjoining patio with a leafy outlook.
- * Full size laundry.
- * Extra toilet WC.



For Sale
\$900,000 - \$950,000

View
By Appointment

Contact
Justin Bond
0406 999 007
justin.bond@ljhooker.com.au
Belinda Bond
0400 544 557
belinda.bond@ljhooker.com.au



Disclaimer: All information contained therein is gathered from relevant third parties sources. We cannot guarantee or give any warranty about the information provided. Interested parties must rely solely on their own enquiries.

**LJ Hooker Tumby Umbi | Killarney
Vale | Bateau Bay
(02) 4389 1722**

Upstairs features:

- * Three generous bedrooms - all with built ins plus an ensuite to the main including bath.
- * Balcony to the main.
- * Main bathroom with generous shower area.

1906 benefits from two car parking spaces on title just outside your front door.

The Location:

- * Golf Australias top 100 ranked 18-hole Golf Course.
- * Access to 20-metre indoor heated lap pool, Rock pools of the freshly refurbished Lagoon pool with seasonal bar, via Magenta Club membership.
- * Directly across the road to Pullman Hotel offering Barretts Restaurant, Shallows Bar with indoor and outdoor dining.

Key Details:

- * Council rates: \$200.42 per quarter.
- * Water rates: \$288.31 per quarter.
- * Strata fees: \$3,914.84 per quarter.

For more information or to arrange a private viewing. Be quick to contact Justin or Belinda today!

Disclaimer: All information contained herein is gathered from sources we consider to be reliable, however we cannot guarantee or give any warranty about the information provided. All images, border/s, property boundaries and floor plans are indicative of the property and for illustrative purposes only. Any development potential stated herein is suggestive only and may be subject to relevant approvals, as such it is not to be relied upon. All distances and measurements are approximate. Interested parties must solely rely on their own enquiries.

More About this Property

Property ID	WHZGJF
Property Type	Townhouse

Justin Bond 0406 999 007

Principal - Licensee | justin.bond@ljhooker.com.au

Belinda Bond 0400 544 557

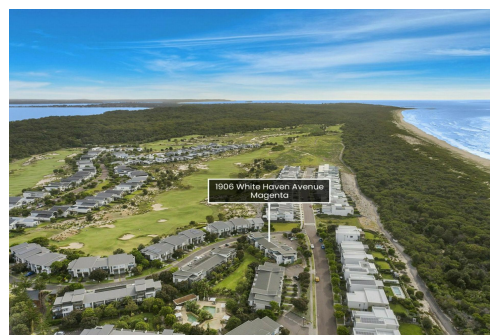
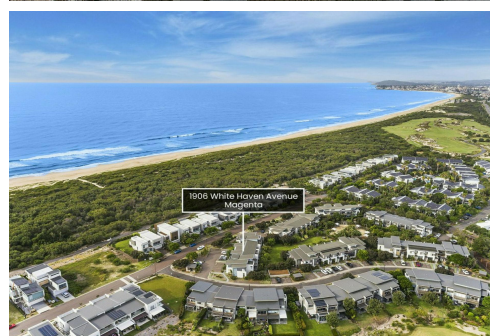
Principal - Licensee | belinda.bond@ljhooker.com.au

LJ Hooker Tumby Umbi | Killarney Vale | Bateau Bay (02) 4389 1722

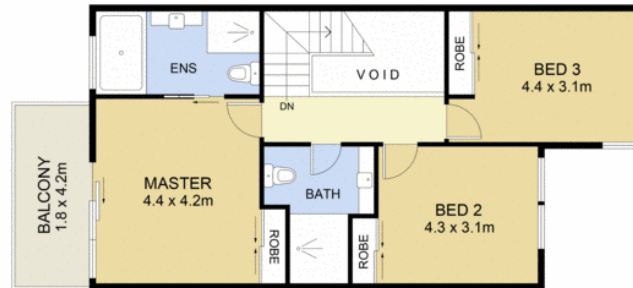
Shop 2, 140 Wyong Road, KILLARNEY VALE NSW 2261
tumbiumbi@ljhooker.com.au | tumbiumbi@ljhooker.com.au



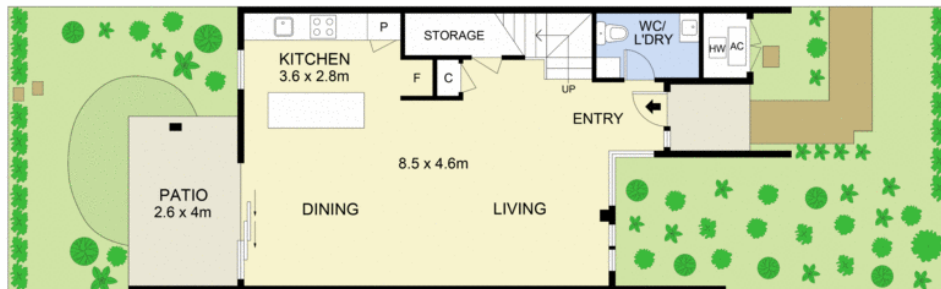
Disclaimer: All information contained therein is gathered from relevant third parties sources. We cannot guarantee or give any warranty about the information provided. Interested parties must rely solely on their own enquiries.



**LJ Hooker Tumby Umbi | Killarney
Vale | Bateau Bay
(02) 4389 1722**



FIRST FLOOR



GROUND FLOOR

0 1 2 3 4 5 SCALE METRES

Scale in metres. Indicative only. Dimensions are approximate. All information contained herein is gathered from sources we believe to be reliable. However we cannot guarantee its accuracy and interested persons should rely on their own enquiries

INT : 134m²

EXT : 19m² NOT TO SCALE



1906 White Havent Avenue, Magenta