



391 - 401 Pro Hart Avenue, Macnamara

Choose the home that suits your family and start your next chapter in Macnamara

Open home location: 15 WOODROOFE LANE MACNAMARA
To view similar finished properties at a nearby site from Porreca Constructions, please attend our open home.

Exclusive opportunity to secure a spacious, separately titled home in one of Canberra's most exciting new suburbs - the perfect place to begin your next chapter.

We have a range of beautifully designed floorplans available at this site, offering the flexibility to choose the home that best suits your lifestyle and family. Please contact our team today for more information on available properties

These exquisite residences represent a rare opportunity not to be missed. Designed for modern living, this limited release features premium homes with generous internal living and no body corporate fees.

Ginninderry is a rapidly growing region celebrated for its scenic vistas

3  2  2 

FOR SALE

Prices Starting from \$849,000

VIEW

By Appointment

AGENTS

Jake Bunday
0411 367 920
jake.bunday@ljhooker.com.au

AGENCY

LJ Hooker Gungahlin
(02) 6213 3999

All information contained therein is gathered from relevant third parties sources.
We cannot guarantee or give any warranty about the information provided.
Interested parties must rely solely on their own enquiries.



and semi-rural charm, and among its neighbourhoods, Macnamara shines as the jewel in its crown. With picturesque ponds, parklands, and breath-taking views of the surrounding hills, this serene suburb offers a truly special lifestyle.

Act quickly to secure one of these select few properties.

Key Features:

- Single title residences with no body corporate fees
- Options for beautifully designed brand new homes
- Contemporary, flowing interiors with functional layouts
- High-End inclusions and fittings throughout
- Modern open plan living spaces with north facing aspects
- Generously sized & fenced courtyards
- Spacious double garages with internal access and electric charging points
- Beautiful modern kitchens with stainless steel appliances, stone benchtops, ample storage, induction cooktop, electric oven, dishwasher, and walk in pantry
- Standout elements ranging across properties including ground-floor master suites, studies or study nooks, upstairs landing areas, and guest powder rooms on ground floor.
- Double-glazed windows through-out. Crafted for premium comfort, these homes feature AWS ComfortEDGE windows that combine sleek design with exceptional energy efficiency. Sunlit interiors, reduced heat transfer and a peaceful indoor atmosphere create a home you'll love spending time in.
- Year-round comfort is on offer with ducted reverse cycle heating and cooling
- Each home is equipped with solar panels and has been designed with sustainable living in mind with EER ratings of 7.0
- Developed by the reputable and local builders at Porecca Constructions
- Located in one of Canberra's beautiful new suburbs Macnamara. Enjoy access to stunning greenspace, community food gardens, dog parks, play areas, new recreation and picnic areas along the Murrumbidgee River, plus a new primary school opening soon.
- Completion dates for properties: First quarter 2027

MORE DETAILS

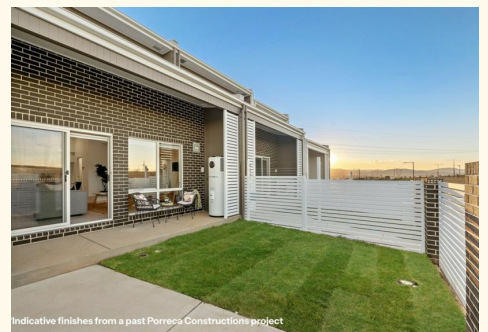
Property ID	36SVGCY
Property Type	House
EER	7

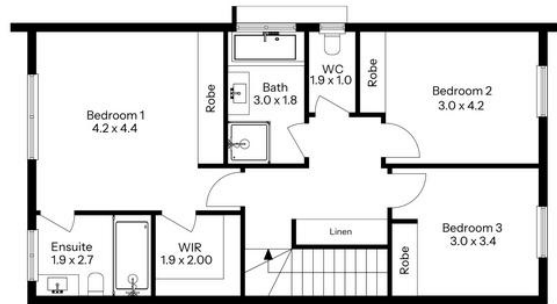
Jake Bunday 0411 367 920

Licensed Agent | jake.bunday@ljhooker.com.au

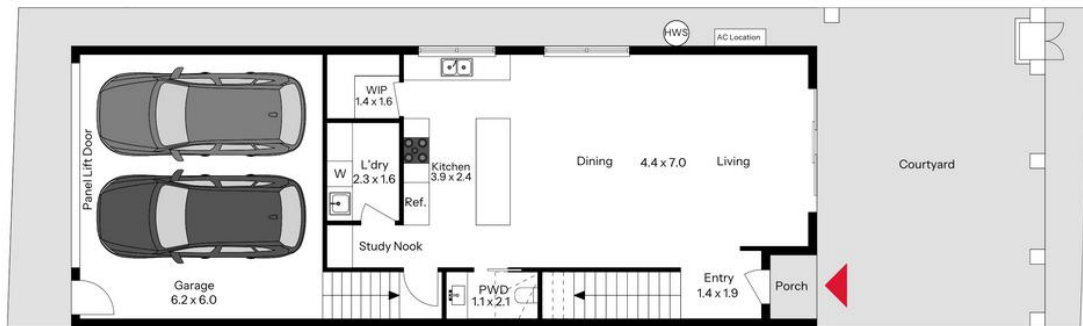
LJ Hooker Gungahlin (02) 6213 3999

Suite 2C, Level 1, Gungahlin Village, 46-50 Hibberson Street,
GUNG AHLIN ACT 2912
gungahlin.ljhooker.com.au | gungahlin@ljhooker.com.au





Upper Level



Ground Floor

The floor plan is not to scale; measurements are indicative and in metres. Exterior elements are not in position. Plans should not be relied on. Interested parties should make and rely on their own enquiries.

401 Pro Hart Avenue, Macnamara



All information contained therein is gathered from relevant third parties sources.
We cannot guarantee or give any warranty about the information provided.
Interested parties must rely solely on their own enquiries.

