



## Macleay Island, 47 Scarborough Terrace

### PRIVATE OASIS.....WITH A SWIM SPA

This gorgeous 3 level home set on 1012 sqm so close to the ferry's, shopping precinct and cafes is a must to inspect. If you are in the market to change your current address, LOOK NO FURTHER! Macleay Island has so much to offer with a vibrant, cultural and artistic community.

Great cafes, restaurants and clubs in close proximity to this fabulous address.

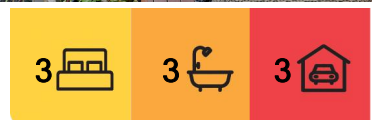
Enjoy summers living on beautiful timber decks, swimming in the swim up spa all surrounded by a tropical garden. Comes with a chook/greenhouse shed, water tank, rotary clothes line, established gardens and so much more. Very quiet, friendly neighbourhood.

Top floor

- \* timber stairs leads up to kitchen/dining/living/lounge
- \* stone bench tops and quality up to date kitchen appliances.
- \* updated bathroom



**Disclaimer:** All information contained therein is gathered from relevant third parties sources. We cannot guarantee or give any warranty about the information provided. Interested parties must rely solely on their own enquiries.



**For Sale**  
Offers Over \$799,000

**View**  
By Appointment

**Contact**  
**Sue Bloomfield**  
0408 789 399  
sbloomfield@pcbi.com.au

**Donna Pinkerton**  
0400 997 699  
dpinkerton@pcbi.com.au

**LJ Hooker Property Centre**  
**(07) 3286 2500**

- \* walk in pantry/storage off living room
- \* expansive views with water glimpses from wrap around deck that capture cool breezes
- \* open plan with plenty of light filled windows
- \* sunshine in living room all day in winter
- \* heavy duty hoist for taking things to the top floor

#### Middle floor

- \* spacious master bedroom with walk in robe, ensuite and air con
- \* 2nd bedroom off stunning timber floored hallway
- \* expansive office or 3rd bedroom with built in and air con
- \* main bathroom with triangular bath
- \* separate toilet
- \* illuminated under stair wine cellar/storage space
- \* 2nd wrap around timber deck
- \* heated swim up spa with sundeck.

#### Ground level

- \* spacious 2 car garage/workshop with boat park
- \* brand new 2.5 kw hot water system
- \* large rainwater tank.
- \* greenhouse/chicken coop.
- \* fruit trees
- \* rotary clothes line
- \* highly efficient 5 kw solar system with no shading resulting in low cost power bills.
- \* fully fenced with electric gate
- \* ultimate privacy provided by lush tropical gardens
- \* fibre to the curb NBN
- \* drip and spray watering system front and back

Please call Sue or Donna now to arrange an inspection or attend one of our Open Homes.

All information contained herein is gathered from sources we consider to be reliable.

However, we cannot guarantee or give any warranty about the information provided.

Interested parties must solely rely on their own enquiries.



**LJ Hooker Property Centre**  
**(07) 3286 2500**

**Disclaimer:** All information contained therein is gathered from relevant third parties sources.

We cannot guarantee or give any warranty about the information provided. Interested parties must rely solely on their own enquiries.

## More About this Property

<b>Property ID</b>	BS93F2S
<b>Property Type</b>	House
<b>Land Area</b>	1012 m <sup>2</sup>
<b>Including</b>	Study Air Conditioning Spa Dishwasher Outdoor Entertaining Workshop Built-in-Robes Secure Parking Fully Fenced Solar Panels Water Tank

**Sue Bloomfield 0408 789 399**

Sales Agent â€“ Canaipa Residential Pty Ltd | sbloomfield@pcbi.com.au

**Donna Pinkerton 0400 997 699**

Independent Contractor - Canaipa Residential Pty Ltd | dpinkerton@pcbi.com.au

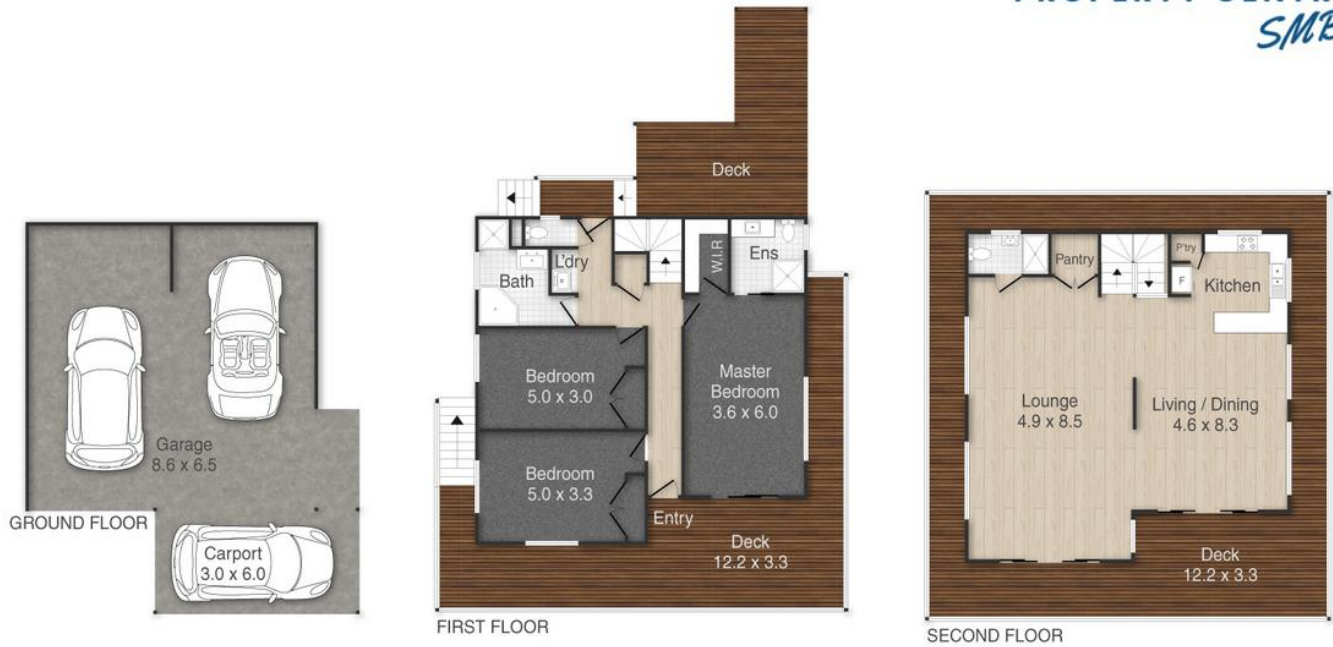
**LJ Hooker Property Centre (07) 3286 2500**

152-164 Shore Street West, Raby Bay, Brisbane QLD 4163  
 propertycentre.ljhooker.com.au | hello@ljhpc.com.au



**LJ Hooker Property Centre**  
**(07) 3286 2500**

**Disclaimer:** All information contained therein is gathered from relevant third parties sources.  
 We cannot guarantee or give any warranty about the information provided. Interested parties must rely solely on their own enquiries.



## 47 Scarborough Terrace, Macleay Island

PLEASE NOTE THIS PLAN IS FOR MARKETING PURPOSES AND IS TO BE USED AS A GUIDE ONLY. ALL MARKINGS, MEASUREMENTS, AREAS, AND LAYOUT ARE INDICATIVE ONLY AND INTERESTED PARTIES SHOULD MAKE THEIR OWN ENQUIRIES BEFORE MAKING ANY DECISIONS. FLOOR COVERINGS INDICATED ARE FOR ILLUSTRATIVE PURPOSES ONLY AND MAY NOT ACCURATELY PORTRAY ACTUAL FLOOR COVERINGS OF THE PROPERTY. NO GUARANTEES ARE MADE REGARDING THE INFORMATION CONTAINED IN THIS PLAN AND NO LIABILITY FOR ANY INACCURACIES IS ACCEPTED.