

Lyndhurst, 26 Yellowbox Crescent

Opulent Living in the Coveted Fig Tree Hill Estate

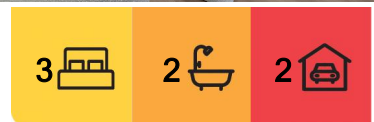
A statement of refined luxury and contemporary grandeur, 26 Yellowbox Crescent stands proudly within the prestigious Fig Tree Hill Estate—one of Southeast Melbourne's most elite and tightly held residential pockets. This meticulously renovated and freshly painted double-storey residence is a masterclass in upscale living, blending timeless architectural elegance with modern sophistication and bespoke detailing throughout.

Beyond the commanding facade and grand entrance, you are greeted by soaring ceilings and expansive, light-filled interiors. The formal lounge and dining area exude style and grace, creating a stunning first impression. At the heart of the home, a designer kitchen fitted with exquisite stone benchtops, premium-grade appliances, and extensive custom cabinetry delivers the perfect fusion of functionality and flair—an entertainer's dream and a chef's sanctuary.

The seamlessly integrated open-plan living space flows into a palatial sunroom/rumpus,



Disclaimer: All information contained therein is gathered from relevant third parties sources. We cannot guarantee or give any warranty about the information provided. Interested parties must rely solely on their own enquiries.



For Sale
\$880,000 to \$949,000

View
ljhooker.com.au/8T2HWR

Contact
Esmail Namdar
0498 577 554
esmail.namdar@ljhooker.com.au

Abraham Namdar
0432 065 867
abraham.dandenong@ljhooker.com.au

LJ Hooker Dandenong City
(03) 9877 9750

ideal for large-scale gatherings or relaxed family evenings.

Upstairs features three luxurious bedrooms, including a master retreat with a walk-in robe and stylish ensuite. Two additional bedrooms with built-in robes share a sleek central bathroom and separate WC for added comfort and privacy.

Outside, an exceptional alfresco domain awaits-an entertainer's haven showcasing a fully decked outdoor area with a BBQ area, and beautifully landscaped surrounds. Beyond aesthetics, the backyard includes a generous shed/workshop, water tank, and an enchanting collection of mature fruit trees, offering both tranquillity and practicality in equal measure.

Property Highlights:

- Sophisticated double-storey residence in a prime, park-facing position
- Fully renovated throughout with modern finishes
- Three expansive bedrooms
- Multiple living zones
- Designer kitchen with premium appliances, stone surfaces, and abundant cabinetry
- Two elegant bathrooms plus a downstairs powder room
- Spacious laundry with external access
- Solar panel system
- Ducted heating and evaporative cooling
- Entertainer's alfresco with a BBQ area
- Generous shed/workshop and water tank
- Double garage with both internal and external access

Enjoy exceptional family living in a prime, connected location-just a short stroll to schools, childcare centres, parks, and Banjo Paterson Lake. With nearby train stations and effortless access to Thompsons Road and the Western Port Highway, convenience is at your doorstep.

A residence of this calibre is rarely offered and highly desired.

DISCLAIMERS:

Every reasonable effort has been made to ensure the accuracy of the information provided; however, neither the vendor, agent, nor agency makes any representation or warranty as to its completeness or correctness.

The floor plans provided are for illustrative purposes only and should be treated as such.

No liability is accepted for any inaccuracies or omissions in the details or dimensions represented.

As the property may be subject to private inspections, the sale status could change prior to scheduled Open Homes. Prospective buyers are advised to verify the current availability of the property before attending any inspection.



LJ Hooker Dandenong City
(03) 9877 9750

Disclaimer: All information contained therein is gathered from relevant third parties sources. We cannot guarantee or give any warranty about the information provided. Interested parties must rely solely on their own enquiries.

More About this Property

Property ID	8T2HWR
Property Type	House
Land Area	424 m2

Esmail Namdar 0498 577 554

Licensed Estate Agent | esmail.namdar@ljhooker.com.au

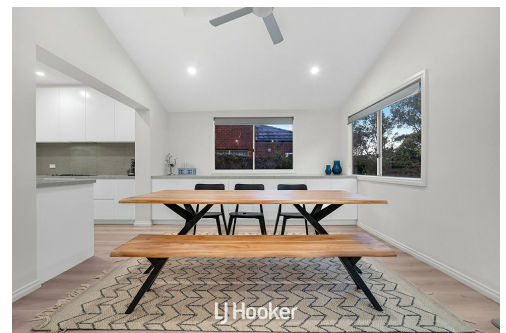
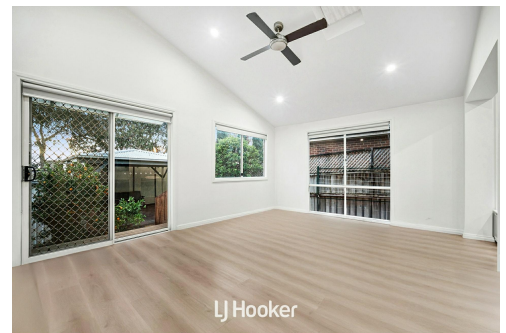
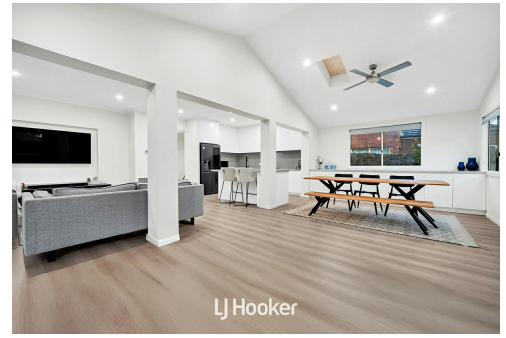
Abraham Namdar 0432 065 867

Licensed Estate Agent / Sales Specialist | abraham.dandenong@ljhooker.com.au

LJ Hooker Dandenong City (03) 9877 9750

347 Lonsdale Street, DANDENONG VIC 3175

dandenong.ljhooker.com.au | dandenong@ljhooker.com.au



Disclaimer: All information contained therein is gathered from relevant third parties sources.

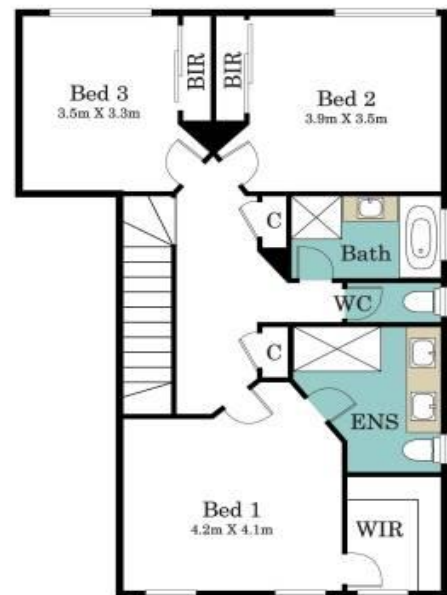
We cannot guarantee or give any warranty about the information provided. Interested parties must rely solely on their own enquiries.

LJ Hooker Dandenong City
(03) 9877 9750

Ground Floor



First Floor



LJ Hooker



26 Yellowbox Crescent, Lyndhurst

* Dimensions are approximate and for illustrative purposes only



LJ Hooker Dandenong City
(03) 9877 9750

Disclaimer: All information contained therein is gathered from relevant third parties sources. We cannot guarantee or give any warranty about the information provided. Interested parties must rely solely on their own enquiries.