



## Lyndhurst, 24 Yellowbox Crescent

### Spacious Family Living in a Prime Location

Set in a sought-after pocket of Lyndhurst, this impressive two-storey home delivers space, comfort, and convenience in equal measure.

Boasting three generously sized bedrooms upstairs all with built-in robes the master suite is a true retreat, featuring a large walk-in robe and a private ensuite with a double vanity. A separate study downstairs offers flexibility and can easily be converted into a fourth bedroom to suit your family's needs.

The home offers multiple living zones including a spacious lounge, a formal dining area, and a separate family room that adjoins a well-appointed modern kitchen complete with gas stovetop and electric oven. A central bathroom, convenient powder room, and laundry add to the home's functional layout.

Freshly painted and fitted with brand new carpets, additional features include gas ducted



**Disclaimer:** All information contained therein is gathered from relevant third parties sources. We cannot guarantee or give any warranty about the information provided. Interested parties must rely solely on their own enquiries.



**For Sale**  
\$799,500 - \$850,000

**View**  
Sat 30th Aug @ 12:40PM - 1:00PM

**Contact**  
**Sushant Gupta**  
0402 422 824  
sushant.gupta@ljhcasey.com.au

**LJ Hooker Hampton Park**  
**(03) 9702 8388**



heating, a large decked pergola perfect for year-round entertaining, a handy backyard shed, and a double lock-up garage.

#### Location Highlights:

Perfectly positioned just a short stroll to schools, childcare centres, beautiful parks, and the scenic Banjo Paterson Lake. With easy access to train stations, Thompsons Road, and the Western Port Highway, everything you need is within easy reach.

Homes of this calibre are rarely offered and highly sought after inspect today and make it yours!

Disclaimer: All information contained herein is gathered from sources we consider to be reliable. However, we cannot guarantee or give any warranty about the information provided, and interested parties must solely rely on their own enquiries.

## More About this Property

<b>Property ID</b>	47XSGFHE
<b>Property Type</b>	House
<b>House Size</b>	184.43 m2
<b>Land Area</b>	412 m2

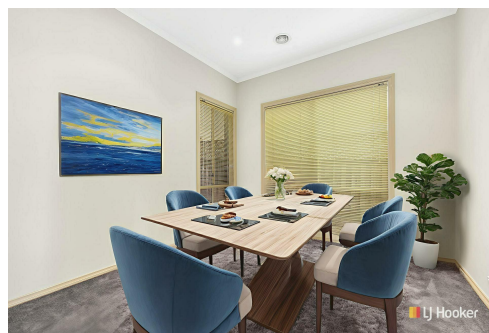
### Sushant Gupta 0402 422 824

Senior Sales Agent | [sushant.gupta@ljhcasey.com.au](mailto:sushant.gupta@ljhcasey.com.au)

### LJ Hooker Hampton Park (03) 9702 8388

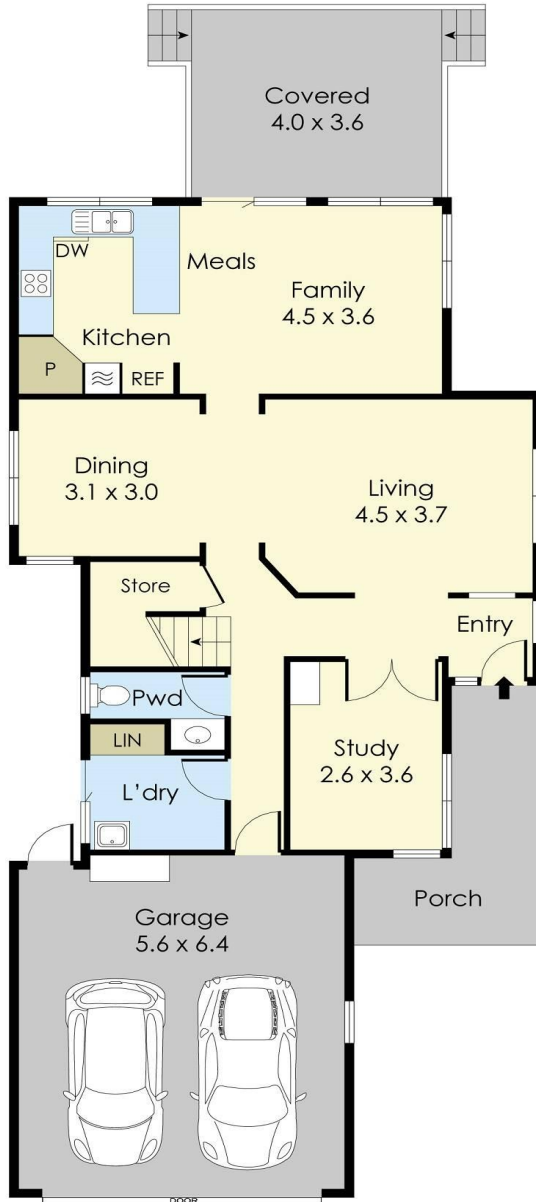
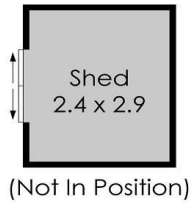
Shop 20, Hampton Park Shopping Centre, 166 Somerville Road, HAMPTON PARK VIC 3976

[hamptonpark.ljhooker.com.au](http://hamptonpark.ljhooker.com.au) | [john.deo@ljhcasey.com.au](mailto:john.deo@ljhcasey.com.au)

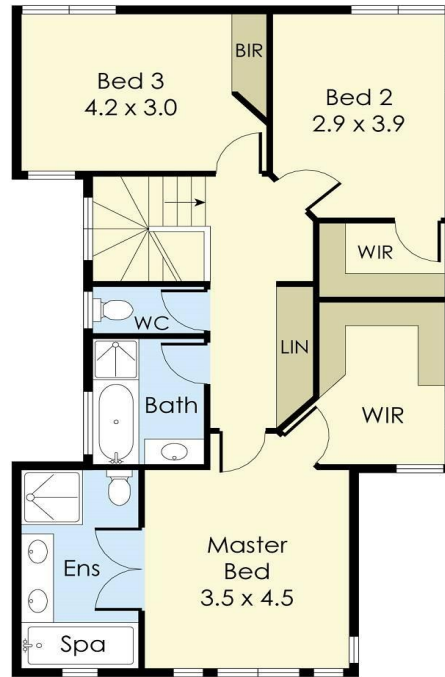


**LJ Hooker Hampton Park  
(03) 9702 8388**

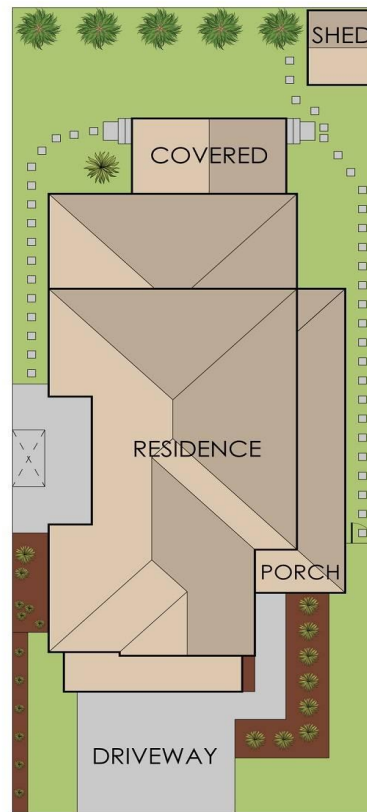
**Disclaimer:** All information contained therein is gathered from relevant third parties sources. We cannot guarantee or give any warranty about the information provided. Interested parties must rely solely on their own enquiries.



GROUND FLOOR



FIRST FLOOR



## 24 Yellowbox Crescent, Lyndhurst

This floorplan is for illustration purposes only and no warranty is given to its accuracy. Purchasers are advised to carry out their own investigations.