

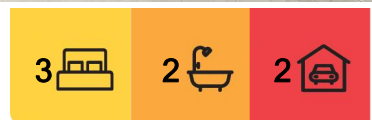
## Lyndhurst, 14 Limonium Crescent

Luxurious Living in Lyndhurst !!

Step inside this exquisite 3-bedroom, 2-bathroom residence and be greeted by a blend of luxury and comfort. To your right, the master bedroom awaits—a private sanctuary featuring laminated flooring, big windows, curtains & roller blinds, and a door with a lock for added privacy. Enjoy the spacious big walk-in robe with sliding doors and an elegant ensuite equipped with a 1200x900 big shower screen, makeup light, and a sliding door with a lock.

As you walk straight ahead, the home opens up to a massive open-plan family living area. Boasting 2.7M high ceilings, this space is adorned with porcelain tiles, LED downlights with dimmers, and a stylish wall cladding on the TV wall. The living area seamlessly extends outdoors through two triple stacker sliding doors to a beautiful wooden decking area—perfect for entertaining or relaxing.

To your left, discover the gourmet kitchen designed for the modern chef. It features glossy laminated cupboards, a sleek mirror splash back, and Hettich soft-closing drawers. Cook



**For Sale**  
\$749,000 - \$799,000

**View**  
[l.jhooker.com.au/47WJTFHE](https://l.jhooker.com.au/47WJTFHE)

**Contact**  
**Sushant Gupta**  
0402 422 824  
[sushant.gupta@ljhcasey.com.au](mailto:sushant.gupta@ljhcasey.com.au)

**John Deo**  
0411 873 123  
[john.deo@ljhcasey.com.au](mailto:john.deo@ljhcasey.com.au)



**Disclaimer:** All information contained therein is gathered from relevant third parties sources. We cannot guarantee or give any warranty about the information provided. Interested parties must rely solely on their own enquiries.

**LJ Hooker Hampton Park**  
**(03) 9702 8388**



up a feast with the 900MM cooktop & oven and enjoy ample workspace on the 40mm stone benchtops with waterfalls on both sides of the large island bench, illuminated by stylish pendant lights.

To your right from the living area, find the additional two spacious bedrooms, each with laminated floors, big windows, sliding wardrobe doors, and equipped with curtains & roller blinds. These rooms are serviced by a well-appointed bathroom featuring a double vanity, bidet in the toilet. The laundry is conveniently located nearby, complete with a heated towel rail.

#### Outdoor Features:

Wooden deck at the house entry and in the backyard.  
Concrete pathways on both sides of the house for easy maintenance.  
Outdoor sensor lights for added security and convenience.

#### Special House Features:

Evaporative cooling and ducted heating for year-round comfort.  
LED downlights with dimmers in the living room and bedrooms.  
Eco-friendly 5.5 KW solar panels (only 4 years old) to reduce energy costs.  
Advanced security system (Alarm) for peace of mind.  
This exceptional home also includes a double garage with secure parking for two vehicles and extra storage space.

Experience the perfect blend of style, comfort, and convenience at 14 Limonium Crescent. Don't miss this opportunity to make this luxurious property your new home.

Located in the prestigious Lyndhurst estate, this home is within walking distance to St. Francis De Sales Primary School and Lynbrook Station. With shopping centers, public transport options, and easy access to the Monash Freeway nearby, commuting and daily errands are a breeze, making this location ideal for busy families.

Contact us today to arrange a viewing!

## More About this Property

<b>Property ID</b>	47WJTFHE
<b>Property Type</b>	House

#### Sushant Gupta 0402 422 824

Senior Sales Agent | [sushant.gupta@ljhcasey.com.au](mailto:sushant.gupta@ljhcasey.com.au)

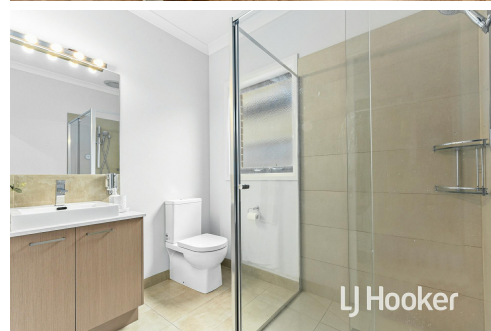
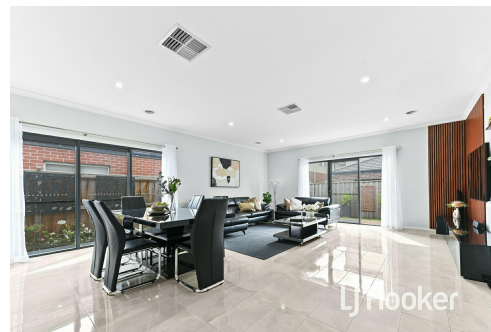
#### John Deo 0411 873 123

Director - Officer In Effective Control | [john.deo@ljhcasey.com.au](mailto:john.deo@ljhcasey.com.au)

#### LJ Hooker Hampton Park (03) 9702 8388

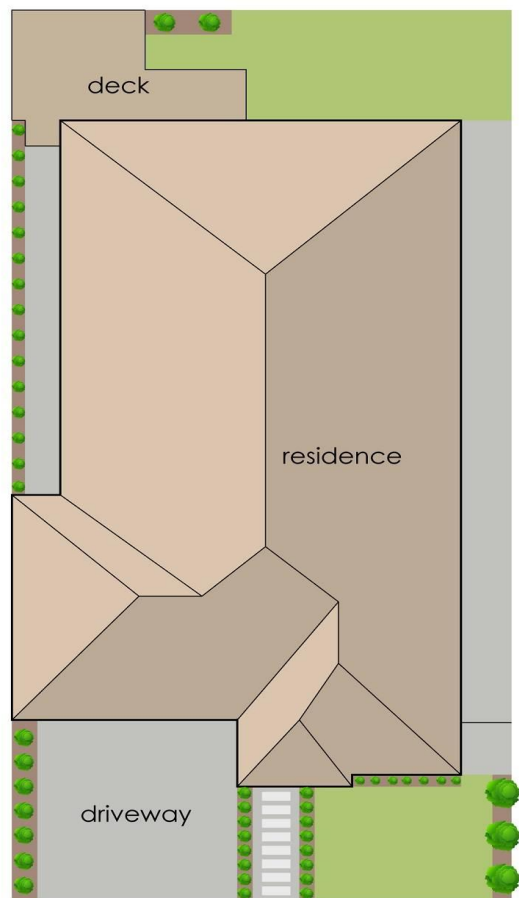
Shop 20, Hampton Park Shopping Centre, 166 Somerville Road, HAMPTON PARK VIC 3976

[hamptonpark.ljhooker.com.au](http://hamptonpark.ljhooker.com.au) | [john.deo@ljhcasey.com.au](mailto:john.deo@ljhcasey.com.au)



**Disclaimer:** All information contained therein is gathered from relevant third parties sources. We cannot guarantee or give any warranty about the information provided. Interested parties must rely solely on their own enquiries.

**LJ Hooker Hampton Park**  
**(03) 9702 8388**



## 14 Limonium Crescent, Lyndhurst

This floorplan is for illustration purposes only and no warranty is given to its accuracy.  
Purchasers are advised to carry out their own investigations.



**LJ Hooker Hampton Park**  
(03) 9702 8388

**Disclaimer:** All information contained therein is gathered from relevant third parties sources.  
We cannot guarantee or give any warranty about the information provided. Interested parties must rely solely on their own enquiries.