



Lynbrook, 16 Dutton Close

Gorgeous Entertainers Home with Side Access!

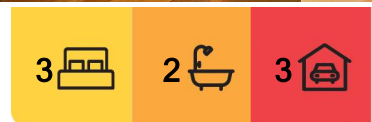
If you're looking for a home that's immaculate in presentation, offers space, outdoor entertaining and simply read to move in than look no further... Conveniently located in sought after Lynbrook within close proximity of Lynbrook Shopping Centre, Train Station, Western Port and South Gippsland Hwy, Freeway access, Schools, Parkland and Lake making this the ideal starter home or investment!

From the moment you walk in you will be impressed with this beautifully presented family home where warmth and neutral tones flow seamlessly, starting off with an inviting form lounge. Make your way through to the hostess kitchen with plenty of natural light, dishwasher, pantry and breakfast bar overlooking the meals area and separate second living area. Comprising of three bedrooms, the master bedroom with full ensuite and walk in robe. Other bedrooms with built-in robes and central to the main bathroom and laundry.

Outdoors is where you will be stunned by the large wrap around pergola ideal for



Disclaimer: All information contained therein is gathered from relevant third parties sources. We cannot guarantee or give any warranty about the information provided. Interested parties must rely solely on their own enquiries.



For Sale
\$730,000 - \$770,000

View
ljhooker.com.au/47XPFFHE

Contact
Aren Aliu
0403 613 988
aren.aliu@ljhcasey.com.au

John Deo
0411 873 123
john.deo@ljhcasey.com.au

LJ Hooker Hampton Park
(03) 9702 8388

entertaining guests plus your very own outdoor inbuilt pizza oven, pizza nights just got a whole lot better! The backyard offers plenty of space for both the family and kids to run around in. Further comforts include refrigerated cooling and heating, colorbond fencing all around, internal access through to the double garage plus the added benefit of side access with gate, perfect for a caravan, boat or extra car accommodation.

This is one to put on top of your list... Get in quick and enjoy the benefits of fantastic living, entertaining and a premium location!

Disclaimer: All information contained herein is gathered from sources we consider to be reliable. However, we cannot guarantee or give any warranty about the information provided, and interested parties must solely rely on their own enquiries

More About this Property

Property ID	47XPFFHE
Property Type	House
Land Area	458 m2
Including	Close to Schools Close to Shops Close to Transport

Aren Aliu 0403 613 988

Sales Manager / Auctioneer / Licensed Estate Agent | aren.aliu@ljhcasey.com.au

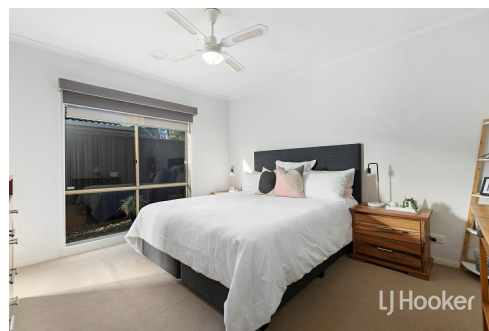
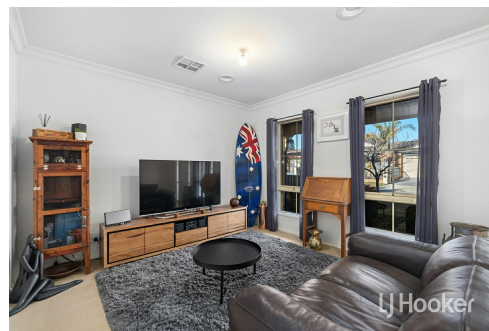
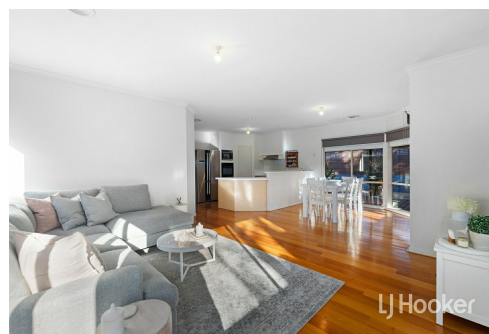
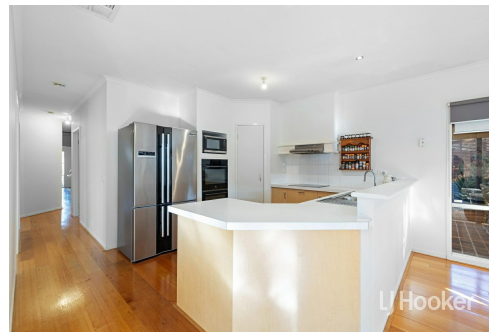
John Deo 0411 873 123

Director - Officer In Effective Control | john.deo@ljhcasey.com.au

LJ Hooker Hampton Park (03) 9702 8388

Shop 20, Hampton Park Shopping Centre, 166 Somerville Road, HAMPTON PARK VIC 3976

hamptonpark.ljhooker.com.au | john.deo@ljhcasey.com.au



Disclaimer: All information contained therein is gathered from relevant third parties sources. We cannot guarantee or give any warranty about the information provided. Interested parties must rely solely on their own enquiries.

LJ Hooker Hampton Park
(03) 9702 8388



16 Dutton Close, Lynbrook

© Produced by Logic Media

This floorplan is for illustration purposes only and no warranty is given to its accuracy. Purchases are advised to carry out their own investigations.



LJ Hooker Hampton Park
(03) 9702 8388

Disclaimer: All information contained therein is gathered from relevant third parties sources. We cannot guarantee or give any warranty about the information provided. Interested parties must rely solely on their own enquiries.