


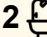
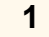


11/48 Thistle Street, Lutwyche

PRIME KEDRON BROOK POSITION !!

Enjoy the convenience and lifestyle in this peaceful and private 3 bedroom (2 bedrooms up and 1 down) townhouse with freshly painted interior, new carpet, blinds and large private courtyard adjoining the Kedron Brook. Positioned at the rear of the complex, in a small boutique complex of only 11, is ideally suited for first home buyers, or those seeking to downsize without compromising on position. Located in a quiet cul-de-sac adjoining the popular Kedron Brook.

- Freshly painted internally, new carpet
- Light filled with separate lounge and dining
- 2 bedrooms up plus another bedroom on ground floor
- 2 bathrooms (1 up and 1 down) and laundry down
- Large private landscaped courtyard with covered entertainment area
- Security screens and new blinds down
- Lockup garage
- Adjoins the Kedron Brook walking and cycling tracks
- 300m HomeCo Shopping Centre
- 200m to the Lutwyche bus station with direct access into the City
- Low Body Corporate \$3815 per annum plus insurance of \$1321.68 per annum
- Rent Appraisal approximately \$775 per week depending on time of

3  2  1 

FOR SALE OFFERS

AGENTS

Richard Mirosch
0414 512 776
richard.mirosch@ljhooker.com.au

AGENCY

LJ Hooker Stafford
(07) 3357 1888

All information contained therein is gathered from relevant third parties sources.
We cannot guarantee or give any warranty about the information provided.
Interested parties must rely solely on their own enquiries.

 **LJ Hooker**

year

You will feel totally connected at only 6.5km to Brisbane's CBD, an easy walk to Lutwyche bus station redefining easy commuting. Whether you are homeward bound or heading out, the CBD, Airport, Lutwyche Shopping Centre, Royal Brisbane Hospital or an array of cafés, shops and restaurants are all just minutes away.

Make no mistake the interstate owners instructions are clear, SELL!!

MORE DETAILS

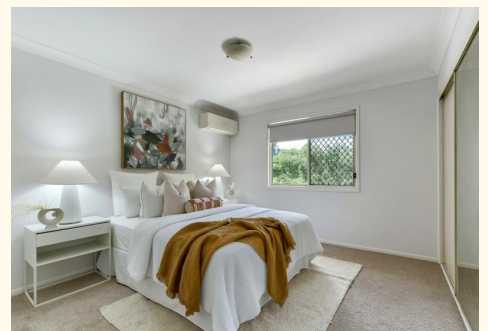
Property ID	1EJ3F4N
Property Type	Townhouse
House Size	157 m2
Including	Toilets (2) Dishwasher Outdoor Entertaining Built-in-Robes Fully Fenced

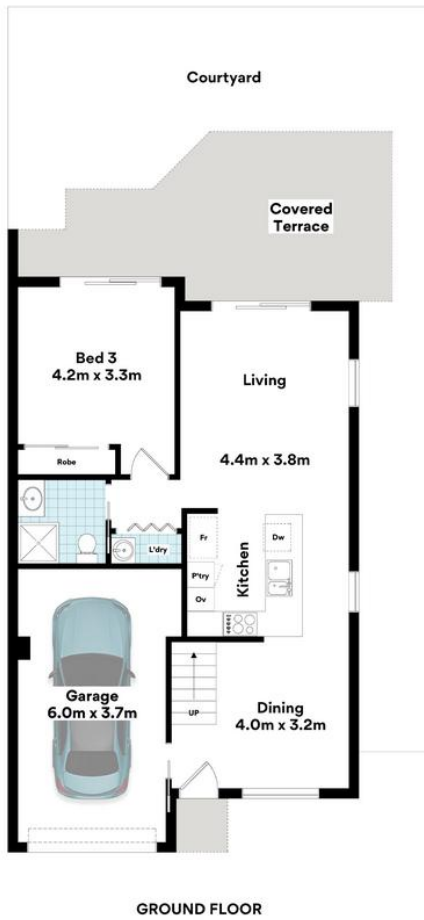
Richard Mirosch 0414 512 776

Principal | richard.mirosch@ljhooker.com.au

LJ Hooker Stafford (07) 3357 1888

205 Stafford Road, STAFFORD QLD 4053
stafford.ljhooker.com.au | stafford@ljhooker.com.au





11/48 Thistle St,
Lutwyche



FLOOR AREA SIZES

Internal	110.8m ²
External	24.4m ²
Garage	22.6m ²
TOTAL	157.8m²

Whilst every attempt has been made to ensure the accuracy of the floor plans contained here, measurements of doors, windows, rooms and any other items are approximate and no responsibility is taken for any error, omission or misstatement.

These plans are for representation purposes only. Provided by primepixels.com.au