

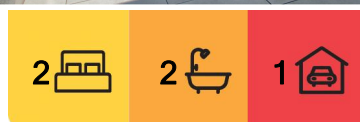


Lutwyche, 508/623 Lutwyche Road

Contemporary & North-Facing.

Brimming with modernity, this north-facing apartment is suffused with an abundance of natural light. Thoughtfully designed, ample openings facilitate refreshing cross-ventilation. Indulge in moments of relaxation within the expansive open-plan lounge and dining area, seamlessly connected to a covered alfresco space where you can unwind. For culinary enthusiasts, the option to host a delightful BBQ presents itself at the communal rooftop leisure area.

Comfort is further elevated with air-conditioning units in both the main bedroom and the living area. The kitchen and bathrooms, adorned with contemporary touches, contribute to the property's overall refinement. The neat complex leaves a striking impression before setting foot inside.



For Sale

Offers over \$499,000

View

ljhooker.com.au/1AA1F4N

Contact

Simon Brigden

0414 869 704

simon.brigden@ljhooker.com.au



Disclaimer: All information contained therein is gathered from relevant third parties sources. We cannot guarantee or give any warranty about the information provided. Interested parties must rely solely on their own enquiries.

LJ Hooker Stafford
(07) 3357 1888

FEATURES:

- + 2 bedrooms, with built-ins.
- + Air-conditioning in the main bedroom and living area.
- + Carpeted and tiled floors.
- + Modern kitchen and bathrooms.
- + Covered al fresco.
- + Beautifully appointed north-facing orientation.
- + Fifth floor position.
- + Secure garage space.
- + Proven rental return at \$525.00.

Contact Simon for the body corporate disclosure, CMS, and by-laws.

More About this Property

Property ID	1AA1F4N
Property Type	Apartment

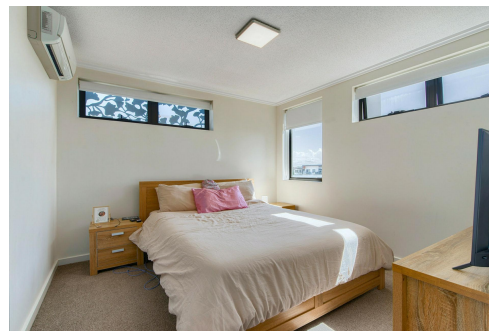
Simon Brigden

Sales & Marketing Consultant | simon.brigden@ljhooker.com.au

LJ Hooker Stafford (07) 3357 1888

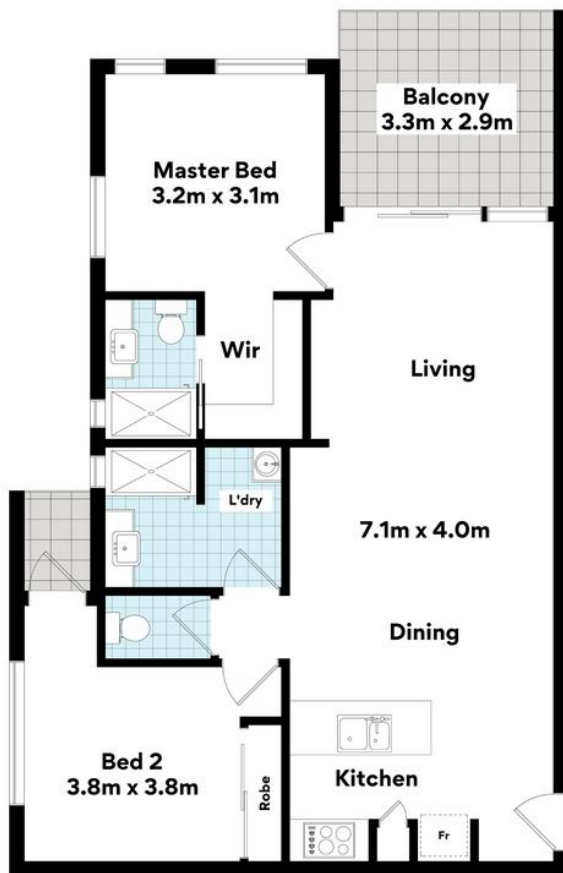
205 Stafford Road, STAFFORD QLD 4053

stafford.ljhooker.com.au | stafford@ljhooker.com.au



LJ Hooker Stafford
(07) 3357 1888

Disclaimer: All information contained therein is gathered from relevant third parties sources. We cannot guarantee or give any warranty about the information provided. Interested parties must rely solely on their own enquiries.



**508/623 Lutwyche Rd,
Lutwyche**



FLOOR AREA SIZES

Internal 82m² | External 12m²

Car Space 16m²

TOTAL 110m²

Whilst every attempt has been made to ensure the accuracy of the floor plans contained here, measurements of doors, windows, rooms and any other items are approximate and no responsibility is taken for any error, omission or misstatement.

These plans are for representation purposes only. Provided by primepixels.com.au