



Lutwyche, 503/623 Lutwyche Road

STUNNING APARTMENT WITH CITY VIEWS

Step into a lifestyle of comfort and convenience with this stunning modern apartment, perfectly positioned for city living with spectacular city views. This exceptional apartment offers everything you need for a luxurious and hassle-free lifestyle.

Property Features:

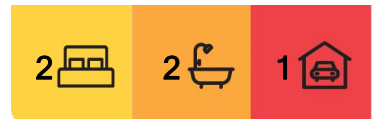
- * Spacious Living Area: Open-plan layout with air-conditioned living and bedrooms
- * Stylish rooftop BBQ area for hosting guests
- * 2 Generously Sized Bedrooms: Positioned on opposite ends of the unit for added privacy.
- * Master Bedroom: Includes a walk-in robe and ensuite
- * Modern Kitchen

Additional Features:

- * Separate laundry room
- * Secure parking space with visitor parking



Disclaimer: All information contained therein is gathered from relevant third parties sources. We cannot guarantee or give any warranty about the information provided. Interested parties must rely solely on their own enquiries.



For Sale
OPEN TO OFFERS

View
ljhooker.com.au/1C72F4N

Contact
Crystal McHenry
crystal.mchenry@ljhooker.com.au

LJ Hooker Stafford
(07) 3357 1888

- * Stylish and well-kept building
- * Entertainer's Balcony with city views
- * Fifth floor position

Proximity to Key Areas:

- * Brisbane CBD: 6km
- * Brisbane Airport: 9 km

* Nearby Schools:

- * Woolloowin State School: 1 km
- * Kedron State High School: 1 km

Convenient Shopping:

- * Lutwyche shopping precinct: 400 m

Public Transport:

- * Woolloowin Train Station: 900 m
- * Lutwyche Bus Station: 260 m

This unit is just moments away from public transport, shops, cafes, and parks, making it the perfect place to call home or as an investment opportunity!

More About this Property

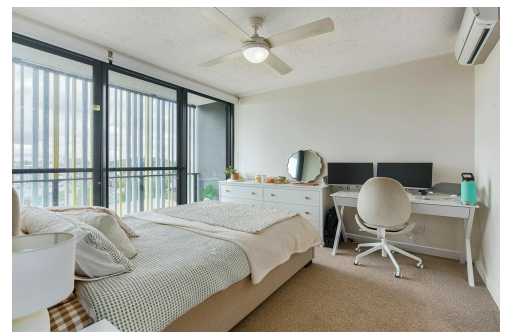
Property ID	1C72F4N
Property Type	Apartment
House Size	91 m ²
Including	Ensuite Air Conditioning Intercom Balcony Dishwasher Outdoor Entertaining Built-in-Robes

Crystal McHenry

Sales & Marketing Consultant | crystal.mchenry@ljhooker.com.au

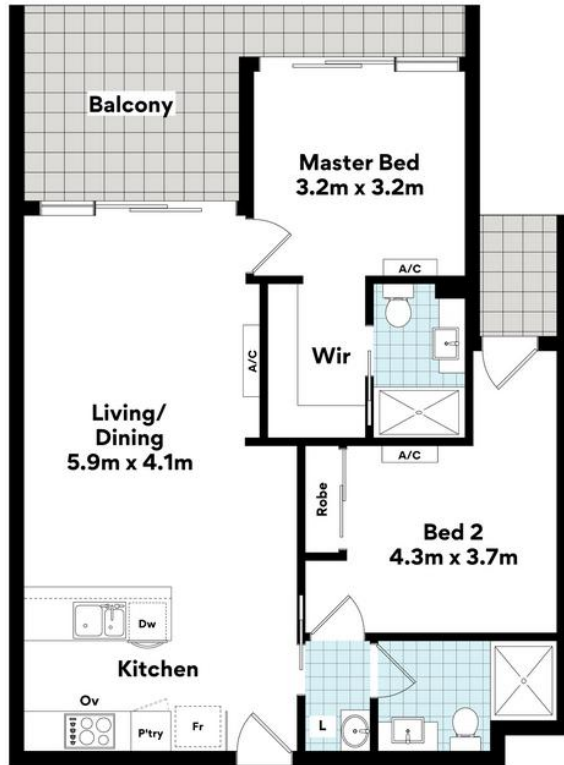
LJ Hooker Stafford (07) 3357 1888

205 Stafford Road, STAFFORD QLD 4053
stafford.ljhooker.com.au | stafford@ljhooker.com.au



LJ Hooker Stafford
(07) 3357 1888

Disclaimer: All information contained therein is gathered from relevant third parties sources. We cannot guarantee or give any warranty about the information provided. Interested parties must rely solely on their own enquiries.



503/623 Lutwyche Rd,
Lutwyche



FLOOR AREA SIZES
Internal 77m² | External 16m²
Car Space 14m²
TOTAL 107m²

Whilst every attempt has been made to ensure the accuracy of the floor plans contained here, measurements of doors, windows, rooms and any other items are approximate and no responsibility is taken for any error, omission or misstatement.

These plans are for representation purposes only. Provided by primepixels.com.au