



Lutwyche, 24/20-24 Colton Avenue

Modern Convenience Walking Distance to the Brook!

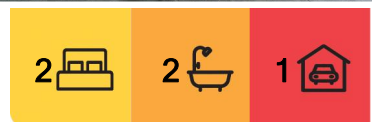
This modern unit, situated in a quiet cul de sac, offers a blend of functional and stylish design. Upon entering the apartment, you'll find a foyer that serves as a practical mudroom. The bedrooms and the main living area are privately tucked away from this entry point. The modern and functional floorplan provides a distinct separation between communal spaces and private areas, ensuring both seclusion and comfort.

The contemporary kitchen seamlessly connects to the open-plan lounge and dining areas, which flow effortlessly into the covered, private alfresco space. Both bedrooms feature built-in wardrobes, with the master bedroom boasting an ensuite. The minimalist color scheme adds a touch of elegance. Combined with its tranquil setting, this apartment provides a peaceful retreat.

Features:



Disclaimer: All information contained therein is gathered from relevant third parties sources. We cannot guarantee or give any warranty about the information provided. Interested parties must rely solely on their own enquiries.



For Sale
Offers over \$699,000

View
ljhooker.com.au/1C7MF4N

Contact
Simon Brigden
0414 869 704
simon.brigden@ljhooker.com.au

Crystal McHenry
0423 467 371
crystal.mchenry@ljhooker.com.au

LJ Hooker Stafford
(07) 3357 1888

- * 2 spacious bedrooms with built-in wardrobes.
- * Fans and air-conditioning.
- * Covered alfresco area.
- * Modern kitchen with stone benchtops.
- * Ensuite and contemporary main bathroom.
- * Carpeted and tiled flooring.
- * Private and practical design.
- * Single garage space.

Call Simon to explore how you can make this your new home.

More About this Property

Property ID	1C7MF4N
Property Type	Apartment
Including	Air Conditioning Intercom Balcony Dishwasher Outdoor Entertaining Built-in-Robes

Simon Brigden 0414 869 704

Sales & Marketing Consultant | simon.brigden@ljhooker.com.au

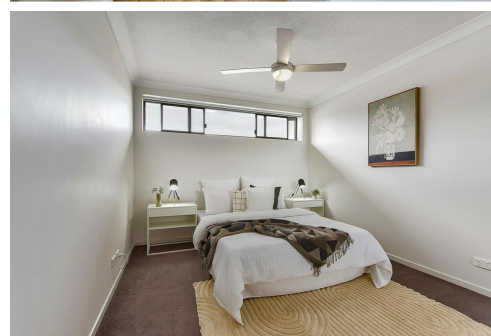
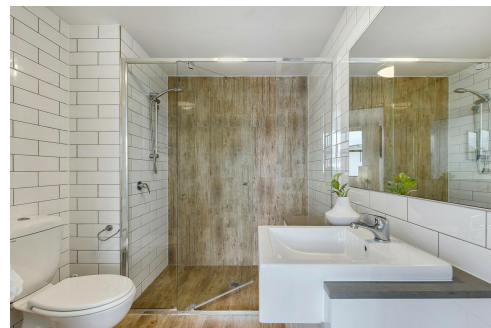
Crystal McHenry 0423 467 371

Sales & Marketing Consultant | crystal.mchenry@ljhooker.com.au

LJ Hooker Stafford (07) 3357 1888

205 Stafford Road, STAFFORD QLD 4053

stafford.ljhooker.com.au | stafford@ljhooker.com.au



Disclaimer: All information contained therein is gathered from relevant third parties sources. We cannot guarantee or give any warranty about the information provided. Interested parties must rely solely on their own enquiries.

LJ Hooker Stafford
(07) 3357 1888



**24/20 Colton Ave,
Lutwyche**



FLOOR AREA SIZES

Internal 89m² | External 19m²

Car Space 16m²

TOTAL 124m²

Whilst every attempt has been made to ensure the accuracy of the floor plans contained here, measurements of doors, windows, rooms and any other items are approximate and no responsibility is taken for any error, omission or misstatement.

These plans are for representation purposes only. Provided by primapixels.com.au