



Lutwyche, 10/30 Colton Avenue

LOVELY PARKVIEW APARTMENT!

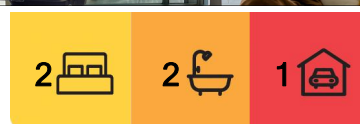
Where modern living meets relaxation, this stylish apartment is tucked away at the end of a peaceful cul-de-sac in one of Lutwyche's most sought-after complexes. Enjoy an open-plan living and dining area that flows onto a spacious balcony with picturesque park views, perfect for entertaining or unwinding to the soothing chorus of birdsong. in the surrounding trees.

FEATURES:

- * Spacious, light-filled open plan living
- * Large entertainers balcony with park view!
- * Modern kitchen with dishwasher
- * Generous master bedroom with built-in robe, ensuite and park view
- * Air-conditioned living and bedroom
- * Secure car park
- * Secure entry + lift access



Disclaimer: All information contained therein is gathered from relevant third parties sources. We cannot guarantee or give any warranty about the information provided. Interested parties must rely solely on their own enquiries.



For Sale
UNDER OFFER

View
ljhooker.com.au/1C7JF4N

Contact
Crystal McHenry
0423 467 371
crystal.mchenry@ljhooker.com.au

LJ Hooker Stafford
(07) 3357 1888

* Brilliant location, close to all amenities

PROXIMITY TO KEY AMENITIES:

5km to the CBD

100m to Kedron Brook Busway

800m to Market Central Lutwyche

150m to Airport Link Tunnel

1 km to Woolloowin Train Station

4 km to Westfield Chermside Shopping

Approx 10 mins to Brisbane Airport

Close to Royal Brisbane Hospital & QUT Kelvin Grove

A quality location 100m walk to Kedron Brook, adding a welcoming escape from the hustle and bustle of everyday living. With 23km of bikeways, stretching from Mitchelton to Nudgee beach and hectares of parkland at your doorstep, this unique location will suit the most active lifestyle.

You will feel totally connected with a direct link to the city, a short stroll to buses redefining easy commuting. Whether you are homeward bound or heading out, the CBD, Airport via the tunnel, Lutwyche Shopping Centre, Royal Brisbane Hospital and an array of shops and restaurants are all just minutes away.

Better get in quickly before this apartment is SOLD!!!

More About this Property

Property ID	1C7JF4N
Property Type	Apartment
House Size	93 m ²
Including	Ensuite Air Conditioning Intercom Balcony Dishwasher Built-in-Robes

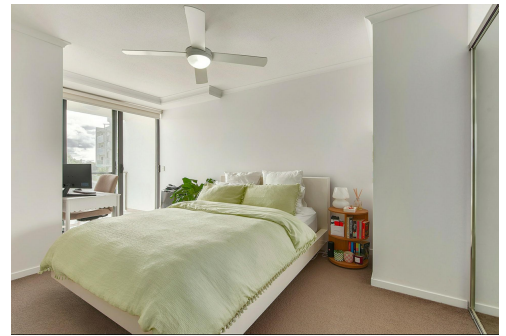
Crystal McHenry 0423 467 371

Sales & Marketing Consultant | crystal.mchenry@ljhooker.com.au

LJ Hooker Stafford (07) 3357 1888

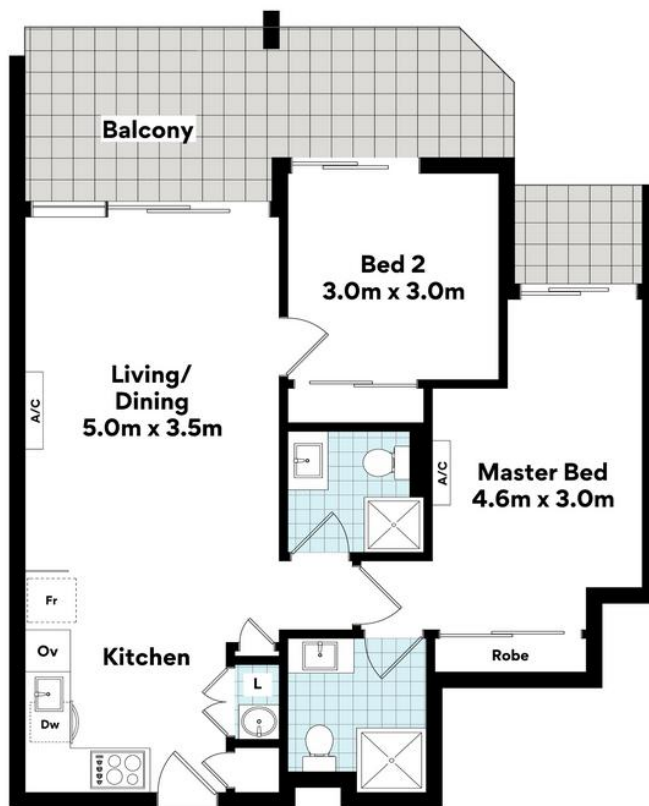
205 Stafford Road, STAFFORD QLD 4053

stafford.ljhooker.com.au | stafford@ljhooker.com.au



Disclaimer: All information contained therein is gathered from relevant third parties sources. We cannot guarantee or give any warranty about the information provided. Interested parties must rely solely on their own enquiries.

**LJ Hooker Stafford
(07) 3357 1888**



**10/30 Colton Ave,
Lutwyche**



FLOOR AREA SIZES

Internal 70m² | External 17m²

TOTAL 87m²

Whilst every attempt has been made to ensure the accuracy of the floor plans contained here, measurements of doors, windows, rooms and any other items are approximate and no responsibility is taken for any error, omission or misstatement.

These plans are for representation purposes only. Provided by primapixels.com.au