


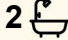
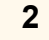
7/22-24 Chrysanthemum Avenue, Lurnea

## Spacious & Modern Townhouse

Positioned in a convenient location, this well-presented townhouse offers comfort, space, and practicality &mdash; perfect for families, first home buyers, or savvy investors.

- Three spacious bedrooms, with built-in wardrobes
- Master bedroom with private ensuite & balcony
- Modern kitchen with ample storage
- Separate living and dining areas for added flexibility
- Split system air conditioning & timber flooring throughout
- Single lock-up garage with internal access, plus an additional car space
- Decent-sized backyard, ideal for entertaining or relaxing
- Strata: approx. \$900 per quarter
- Council: approx. \$422 per quarter

Conveniently located close to local public schools, shops, parks, and transport, this property offers a lifestyle of ease and accessibility.

3  2  2 

### FOR SALE

Please Call

### AGENTS

Alen Toma

0405 157 651

[atoma.casula@ljhooker.com.au](mailto:atoma.casula@ljhooker.com.au)

### AGENCY

LJ Hooker Casula

(02) 9601 8333

All information contained therein is gathered from relevant third parties sources.  
We cannot guarantee or give any warranty about the information provided.  
Interested parties must rely solely on their own enquiries.

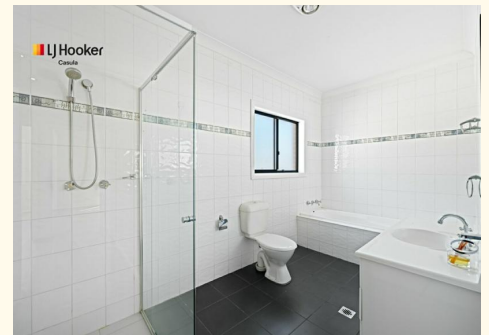
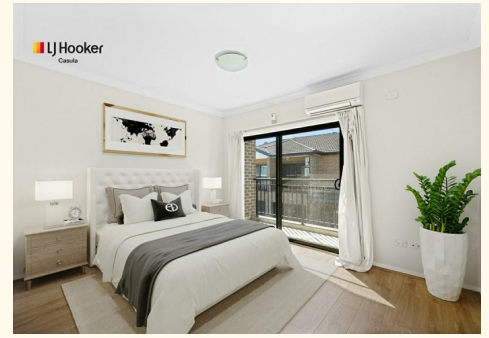
 **LJ Hooker**

## MORE DETAILS

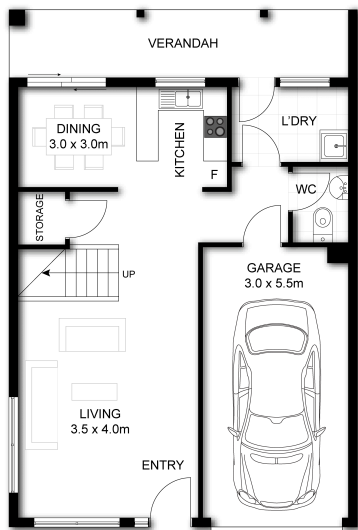
Property ID ZW1GRH  
Property Type Townhouse  
Land Area 230 m2  
Including Ensuite  
Air Conditioning  
Toilets (3)  
Alarm  
Balcony  
Outdoor Entertaining  
Floorboards  
Built-in-Robes  
Secure Parking  
Fully Fenced  
Remote Garage

**Alen Toma 0405 157 651**  
Principal | [atoma.casula@ljhooker.com.au](mailto:atoma.casula@ljhooker.com.au)

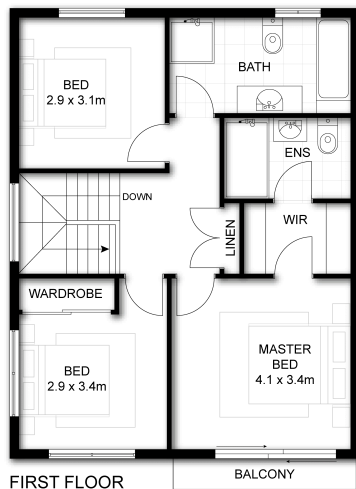
**LJ Hooker Casula (02) 9601 8333**  
62 Marsh Parade, CASULA NSW 2170  
[casula.ljhooker.com.au](http://casula.ljhooker.com.au) | [casula@ljhooker.com.au](mailto:casula@ljhooker.com.au)



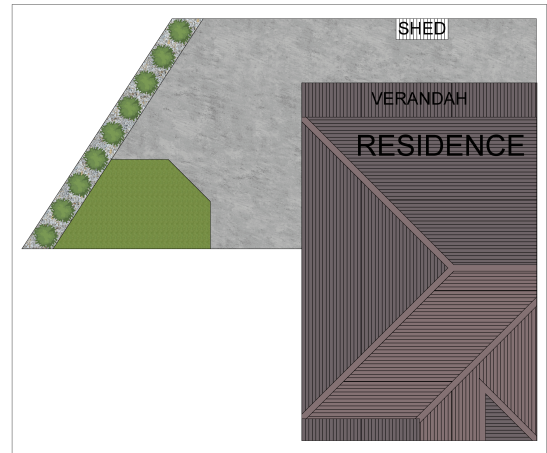
All information contained therein is gathered from relevant third parties sources.  
We cannot guarantee or give any warranty about the information provided.  
Interested parties must rely solely on their own enquiries.



GROUND FLOOR



FIRST FLOOR



SITE PLAN



7/22 Chrysanthemum Avenue, Lurnea

Disclaimer: This floor plan is used for marketing purposes only and is subject to errors and inaccuracy. The marketing Agent & Maraj Media will not accept any liability. Interested parties should make and rely on their own enquiries.

