



20 Wych Avenue, Lurnea

## Large 765sqm Block with Endless Potential

Positioned in one of Lurnea's most convenient pockets, 20 Wych Avenue offers an outstanding opportunity for developers, builders, investors, or families seeking to create their dream home.

### Property Features:

- Large 765.1sqm block
- 14.3m frontage
- R3 Medium Density zoning
- Existing 2-bedroom, 2-bathroom residence
- Single lock-up garage
- Quiet, well-established street

Perfectly located within walking distance to Lurnea shops, schools, and public transport, this property combines lifestyle convenience with excellent development potential.

2 2 1

### FOR SALE

Please Call

### AGENTS

Alen Toma

0405 157 651

[atoma.casula@ljhooker.com.au](mailto:atoma.casula@ljhooker.com.au)

### AGENCY

LJ Hooker Casula

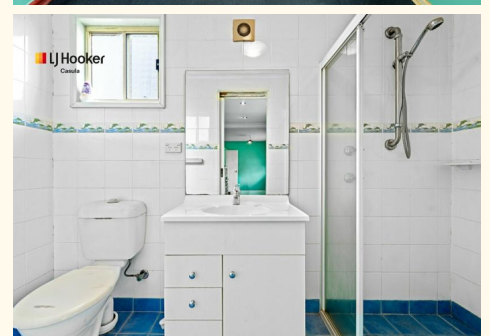
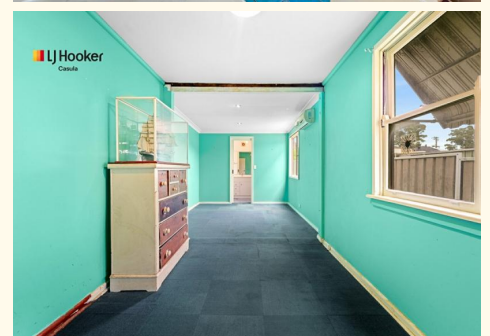
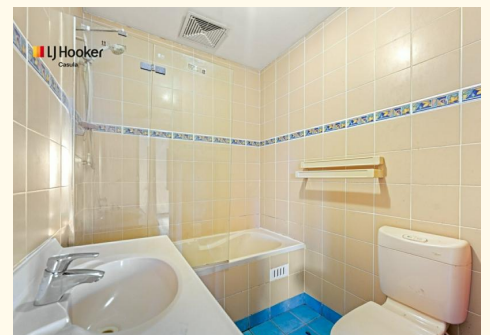
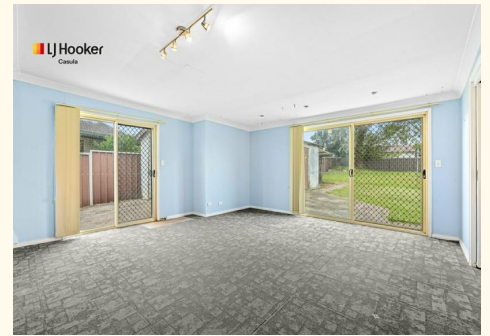
(02) 9601 8333

## MORE DETAILS

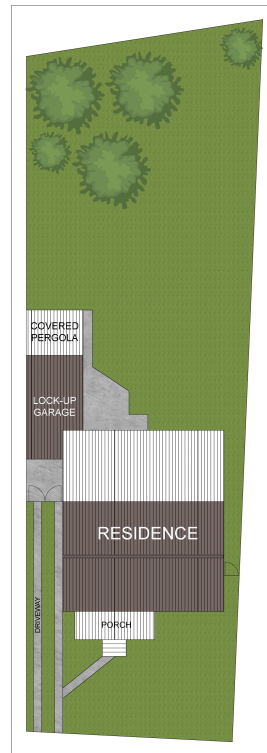
Property ID ZQ1GRH  
Property Type House  
Land Area 765.1 m2  
Including Ensuite  
Air Conditioning  
Toilets (3)

**Alen Toma 0405 157 651**  
Principal | [atoma.casula@ljhooker.com.au](mailto:atoma.casula@ljhooker.com.au)

**LJ Hooker Casula (02) 9601 8333**  
62 Marsh Parade, CASULA NSW 2170  
[casula.ljhooker.com.au](http://casula.ljhooker.com.au) | [casula@ljhooker.com.au](mailto:casula@ljhooker.com.au)



All information contained therein is gathered from relevant third parties sources.  
We cannot guarantee or give any warranty about the information provided.  
Interested parties must rely solely on their own enquiries.



SITE PLAN



## 20 Wych Avenue, Lurnea

Disclaimer: This floor plan is used for marketing purposes only and is subject to errors and inaccuracy. The marketing Agent & Maraj Media will not accept any liability. Interested parties should make and rely on their own enquiries.

