



Lorn, 94 Belmore Road

First Class Living in Lorn!

If you've always dreamed of joining the fortunate few who fly first class daily & have pined to do the same, well.. this bespoke, designer home in leafy Lorn is set to impress & ensure you stay at the front of the plane for keeps!

Tucked away behind established Norfolk pines, coupled with an attractive Hamptons-inspired facade is this stunning family home, externally exuding all of the charm & internally, on point & as sharp as a tack - we know this is going to be a great family home you cannot walk past!

The home flows just brilliantly, from front to rear & everything in between. The master suite is huge, and separated from the rest of the home, allowing for a blissful retreat space from the rest of the action. The extra high ceilings throughout accentuate the sense of space on offer & you'll truly appreciate this as you push deeper into the home.



For Sale

\$1.495M

View

Sat 7th Jun @ 12:00PM - 12:20PM

Contact

Todd Fisher

0438 592 920

tfisher.maitland@ljhooker.com.au

Ben Cotton

0434 638 822

bcotton.maitland@ljhooker.com.au



Disclaimer: All information contained therein is gathered from relevant third parties sources. We cannot guarantee or give any warranty about the information provided. Interested parties must rely solely on their own enquiries.

LJ Hooker Maitland
(02) 4933 5511

Leading down the hallway you ultimately land in the beating heart of the home, truly the focal point of every family gathering, or entertainer's dreams realised. The designer kitchen is to die for, with top-end Smeg appliances, integrated gas cooktop & rangehood, stunning stone benchtops with waterfall edge & quality cabinetry covering off on all your storage needs. The home chef keeps in touch with all 4 of the living options internally & looks out to the undercover alfresco - ensuring you're completely connected when it comes to Christmas, the best of Boxing Day BBQs & weekend long lunches. The vaulted ceilings in this space have to be seen to be truly appreciated & again a standout feature of this designer build.

Tucked away behind barn doors, the kid's rumpus area & sleeping arrangements are found, and can effortlessly be closed away when needed, creating a space beautifully for their own enjoyment, or opened up to join the rest of the crew. All of the bedrooms have built-in storage & are close to the main bathroom for increased functionality. Secondary living options abound with the media room, complete with a wine rack or the sitting area with a combustion fireplace. Stacking doors spill out to the alfresco, that looks over the side yard, still offering plenty of space for the kids to play or pets to roam.

Externally the property is perfectly private, and secured by electronic gates & internal lockable garaging for two cars plus storage space is on offer.

This bespoke offering is ideal for family life and a born entertainer, situated only a short walk to the village shopping strip of Lorn, and then further into the Levee Precinct of Maitland.

Proudly marketed by LJ Hooker Maitland, please call exclusive agents Todd Fisher 0438 592 920 or Ben Cotton 0434 638 822 - 7 days for all inspections & further information.

All information contained herein is gathered from sources we deem to be reliable. However, we cannot guarantee its accuracy and interested persons should rely on their own enquiries.



LJ Hooker Maitland
(02) 4933 5511

Disclaimer: All information contained therein is gathered from relevant third parties sources. We cannot guarantee or give any warranty about the information provided. Interested parties must rely solely on their own enquiries.

More About this Property

Property ID	1DJGF6H
Property Type	House
Land Area	610 m2
Including	Ensuite Study Air Conditioning Toilets (2) Built-in-Robes Close to Schools Close to Shops Close to Transport Liveability Prestige Homes

Todd Fisher 0438 592 920

Principal/Licensee in Charge | tfisher.maitland@ljhooker.com.au

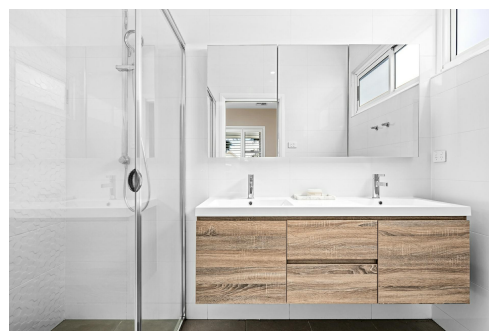
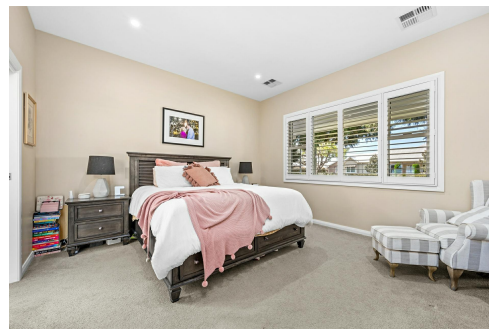
Ben Cotton 0434 638 822

Licensed Real Estate Agent & Auctioneer | bcotton.maitland@ljhooker.com.au

LJ Hooker Maitland (02) 4933 5511

24 Ken Tubman Drive, MAITLAND NSW 2320

maitland.ljhooker.com.au | maitland@ljhooker.com.au



Disclaimer: All information contained therein is gathered from relevant third parties sources.
We cannot guarantee or give any warranty about the information provided. Interested parties must rely solely on their own enquiries.

LJ Hooker Maitland
(02) 4933 5511



94 Belmore Rd, Lorn

All information contained herein is gathered from sources we deem reliable. However, we cannot guarantee its accuracy and act as a messenger only in passing on the details. Interested parties should rely on their own inquiries and the contract for sale. The floor plans are artist's impressions only. The site plan is not to scale.

LJ Hooker
Maitland

LJ Hooker

LJ Hooker Maitland
(02) 4933 5511

Disclaimer: All information contained therein is gathered from relevant third parties sources. We cannot guarantee or give any warranty about the information provided. Interested parties must rely solely on their own enquiries.