

## Longley, 1591 Huon Road

Longley - The Perfect Sanctuary for the Busy Professional Couple

Ant's "Fluff-Free" Description...

Looking for the perfect balance between career and lifestyle?

Welcome to Longley - where modern living meets natural serenity, just 20 minutes from the Hobart CBD.

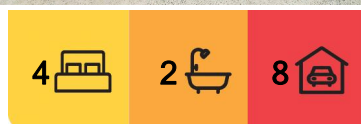
Set on 6,472m2 (approx. 1.6 acres) of private, leafy land, this immaculate residence is a premium lifestyle retreat for professional couples who value space, tranquility, and seamless work-from-home potential.

What's On Offer?

\* 3 generous bedrooms + separate studio - The ideal setup for a dedicated home office,



**Disclaimer:** All information contained therein is gathered from relevant third parties sources. We cannot guarantee or give any warranty about the information provided. Interested parties must rely solely on their own enquiries.



**For Sale**  
Offers over \$895,000

**View**  
[ljhooker.com.au/5XDJFCS](http://ljhooker.com.au/5XDJFCS)

**Contact**  
**Ant Manton**  
0408 621 856  
[antmanton@ljhookerpinnacle.com](mailto:antmanton@ljhookerpinnacle.com)

**Zac Flanagan**  
0466 685 937  
[zflanagan@ljhookerpinnacle.com](mailto:zflanagan@ljhookerpinnacle.com)

**LJ Hooker Pinnacle Property**  
(03) 6272 8177

guest accommodation, or creative space away from the main residence.

- \* Expansive land - Room to unwind, entertain, or simply enjoy the privacy of your own natural sanctuary.

- \* Light-filled open-plan living - Designed for effortless indoor-outdoor flow and perfect for hosting clients or friends.

- \* Chef-level kitchen - Smeg oven, Siemens dishwasher, and optional Westinghouse fridge - because busy professionals still deserve gourmet quality.

## Comfort Meets Convenience

Multiple heating options to keep things comfortable year-round:

- \* Nectre wood heater (installed 2023)

- \* Daikin heat pump

- \* Noirot panel heaters

- \* Underfloor heating throughout kitchen, living, dining, bathroom, ensuite & hallway - for warm mornings and winter luxury.

- \* Rinnai instant gas hot water - Reliable, energy-efficient, and bottled gas ready.

- \* 30,000L tank water - Sustainable and self-sufficient living made easy.

- \* Private outdoor entertaining - Sun deck, lush gardens, and a peaceful outlook ideal for end-of-day unwinding or weekend hosting.

- \* Garden shed + ample storage - Tidy solutions for tools and gear.

- \* NBN connected - Stay plugged in with high-speed wireless access, perfect for video calls, remote work, and streaming.

## Why Longley Works for Professionals

- \* 20 minutes to Hobart CBD - An easy, scenic commute to the city (minus the stress).

- \* Moments from the Longley Hotel - Ideal for a Friday night dinner or weekend wine.

- \* Surrounded by nature - Quiet trails, crisp mountain air, and no traffic noise.

- \* Thriving local community - Relaxed, welcoming, and completely private - exactly what you want after a busy week.

Whether you're a couple building a life together, craving a peaceful yet connected escape, or simply done with city hustle 24/7, this executive retreat is ready to impress.



**LJ Hooker Pinnacle Property**  
**(03) 6272 8177**

**Disclaimer:** All information contained therein is gathered from relevant third parties sources. We cannot guarantee or give any warranty about the information provided. Interested parties must rely solely on their own enquiries.



Opportunities like this don't come around often - act fast!

Onwards and upwards to your Longley lifestyle!

"I Work Harder - It's THAT Simple!"

Disclaimer: The information contained herein has been supplied to us and we have no reason to doubt its accuracy, however, cannot guarantee it. Accordingly, all interested parties should make their own enquiries to verify this information.

## More About this Property

Property ID	5XDJFCS
Property Type	House
House Size	170 m2
Land Area	6472 m2
Including	Ensuite Air Conditioning Toilets (2) Alarm Fire Place Courtyard Balcony Deck Outdoor Entertaining Workshop Built-in-Robes Water Tank

**Ant Manton 0408 621 856**

Real Estate Agent | [antmanton@ljhookerpinnacle.com](mailto:antmanton@ljhookerpinnacle.com)

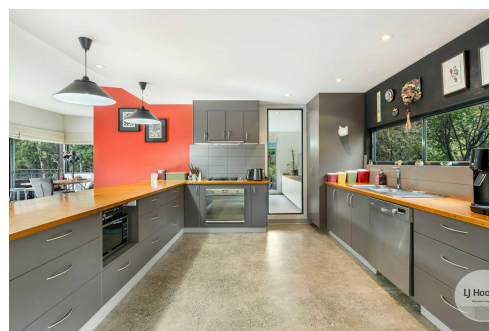
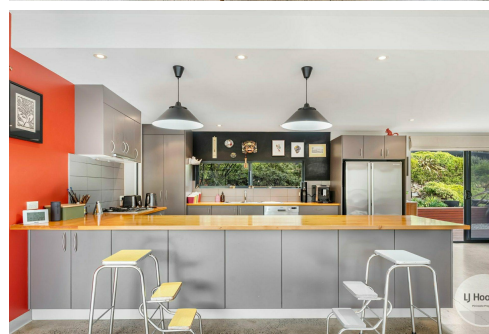
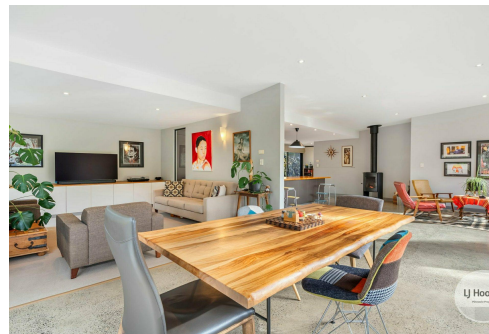
**Zac Flanagan 0466 685 937**

Operations Manager to Ant Manton | [zflanagan@ljhookerpinnacle.com](mailto:zflanagan@ljhookerpinnacle.com)

**LJ Hooker Pinnacle Property (03) 6272 8177**

402 Main Road, GLENORCHY TAS 7010

[pinnacleproperty.ljhooker.com.au](http://pinnacleproperty.ljhooker.com.au) | [hello@ljhookerpinnacle.com](mailto:hello@ljhookerpinnacle.com)



**Disclaimer:** All information contained therein is gathered from relevant third parties sources. We cannot guarantee or give any warranty about the information provided. Interested parties must rely solely on their own enquiries.

**LJ Hooker Pinnacle Property**  
**(03) 6272 8177**



## 1591 Huon Road, Longley

House area: 170 sqm

Areas and dimensions are approximate and therefore this floor plan should only be used for illustrative purposes.

Real Estate Marketing by [nextcreative.com.au](http://nextcreative.com.au)



**LJ Hooker Pinnacle Property**  
(03) 6272 8177

**Disclaimer:** All information contained therein is gathered from relevant third parties sources.  
We cannot guarantee or give any warranty about the information provided. Interested parties must rely solely on their own enquiries.