

## Long Jetty, 42 Shelly Beach Road

Stunning 5-Bedroom Renovated Home with Dramatic Vaulted Ceilings & Oversized Garage —Minutes from Shelly Beach!

Welcome to your dream home!

This beautifully renovated 5 bedroom ensuite property offers modern luxury and convenience in a prime location, just minutes from the stunning Shelly Beach.

Key Features:

Modern Design: High end finishes throughout the home, combining style and functionality to create an inviting living space.

Spacious Living: Generous loungeroom that opens onto the dining area and kitchen.

5

2

4

**For Sale**

Price Guide: \$1,650,000

**View**

By Appointment

**Contact**

**Justin Bond**

0406 999 007

justin.bond@ljhooker.com.au

**Belinda Bond**

0400 544 557

belinda.bond@ljhooker.com.au



**Disclaimer:** All information contained therein is gathered from relevant third parties sources. We cannot guarantee or give any warranty about the information provided. Interested parties must rely solely on their own enquiries.

**LJ Hooker Tumby Umbi | Killarney  
Vale | Bateau Bay  
(02) 4389 1722**

Vaulted Ceilings: Step into the dining area featuring dramatic vaulted ceilings, capturing an abundance of natural light and creating an open and airy atmosphere perfect for entertaining.

Five generously sized bedrooms, each with its own built-in robe, including walk in robe and ensuite to the main.

Modern kitchen with plenty of bench space and storage as well as a dishwasher and gas cooking.

Internal laundry with bonus WC.

Outside features a hardwood deck, the ideal place to entertain, a large rear yard plus an oversized garage at the rear of the property, offering plenty of storage and parking space or cater for your recreational equipment.

The yard lends itself to an inground pool, with the potential to convert the garage into a pool cabana with a little imagination.

Ideal Location: Enjoy the sea breezes of coastal living, while being just a short stroll to Shelly Beach, renowned for its beauty and relaxed vibe.

- \* 240 m walk to Our Lady of the Rosary Catholic school.
- \* 750 m walk to Tuggerah Lakes Secondary College.
- \* 850 m to Shelly Beach Golf Course.
- \* 1.2 kms to Bay Village Square.
- \* 1.6 kms to Long Jetty Café
- \* 2.4 kms to restaurants and dining at Toowoona Bay
- \* Approximately 10 kms to Tuggerah Station, Westfield Tuggerah and M1 Motor way.

Renovated to Perfection: Freshly updated with all the modern amenities you need, from sleek bathrooms to a modern kitchen, ready to move in and enjoy.

This exceptional home combines luxury, space, and a prime location to offer a lifestyle that is hard to beat. Do not miss out —call Justin or Belinda to arrange your viewing today!

Disclaimer: All information contained herein is gathered from sources we consider to be reliable, however we cannot guarantee or give any warranty about the information provided. All images, border/s, property boundaries and floor plans are indicative of the property and for illustrative purposes only. Any development potential stated herein is suggestive only and may be subject to relevant approvals, as such it is not to be relied upon. All distances and measurements are approximate. Interested parties must solely rely on their own enquiries.



**Disclaimer:** All information contained therein is gathered from relevant third parties sources. We cannot guarantee or give any warranty about the information provided. Interested parties must rely solely on their own enquiries.

**LJ Hooker Tumby Umbi | Killarney  
Vale | Bateau Bay  
(02) 4389 1722**

## More About this Property

<b>Property ID</b>	WFGGJF
<b>Property Type</b>	House
<b>Land Area</b>	575.4 m2

**Justin Bond 0406 999 007**

Principal - Licensee | [justin.bond@ljhooker.com.au](mailto:justin.bond@ljhooker.com.au)

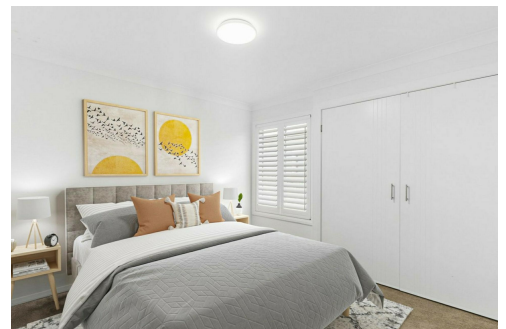
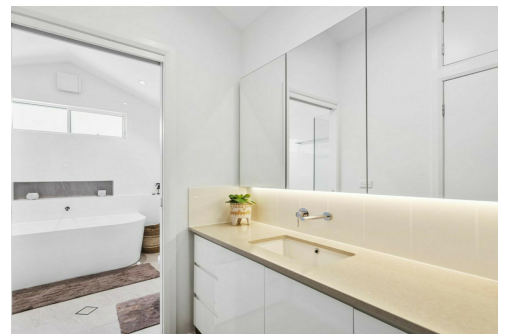
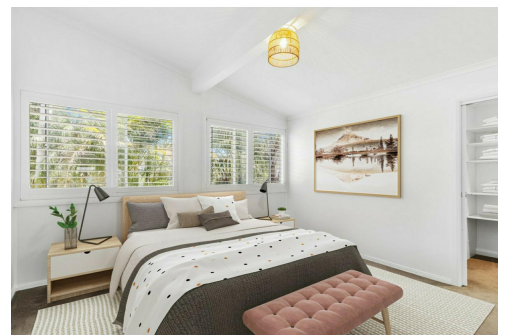
**Belinda Bond 0400 544 557**

Principal - Licensee | [belinda.bond@ljhooker.com.au](mailto:belinda.bond@ljhooker.com.au)

**LJ Hooker Tumbi Umbi | Killarney Vale | Bateau Bay (02) 4389 1722**

Shop 2, 140 Wyong Road, KILLARNEY VALE NSW 2261

[tumbiumbi@ljhooker.com.au](mailto:tumbiumbi@ljhooker.com.au) | [tumbiumbi@ljhooker.com.au](mailto:tumbiumbi@ljhooker.com.au)



**Disclaimer:** All information contained therein is gathered from relevant third parties sources. We cannot guarantee or give any warranty about the information provided. Interested parties must rely solely on their own enquiries.

**LJ Hooker Tumbi Umbi | Killarney  
Vale | Bateau Bay  
(02) 4389 1722**

42 Shelly Beach Road Long Jetty



Scale in meter. Indicative only. Measurement and dimensions are approximate.  
All information contained herein is gathered from source we believe to be reliable.  
However we cannot guarantee its accuracy and interested persons should rely on their own enquiries.



APPROX. INT : 143m<sup>2</sup> 



LJ Hooker Tumbi Umbi | Killarney  
Vale | Bateau Bay  
(02) 4389 1722

**Disclaimer:** All information contained therein is gathered from relevant third parties sources.  
We cannot guarantee or give any warranty about the information provided. Interested parties must rely solely on their own enquiries.