



## Long Jetty, 48a Bonnieview Street

### Spacious Duplex with Street Frontage!

Occupying a rare corner block position allowing for your own street frontage.

Well-presented inside and out with a Colorbond roof and sleek rendered finish.

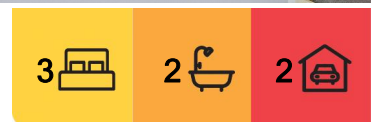
Low maintenance grounds.

This could be the ultimate downsizer or family home in a Blue-Chip suburb, within proximity to Shelly Beach.

Be quick to inspect 48A Bonnieview Street, Long Jetty.

The floor plan features:

\*Main living area and dining with hardwood flooring.



**For Sale**  
Contact Agent

**View**  
By Appointment

**Contact**  
**Justin Bond**  
0406 999 007  
justin.bond@ljhooker.com.au  
**Belinda Bond**  
0400 544 557  
belinda.bond@ljhooker.com.au



**Disclaimer:** All information contained therein is gathered from relevant third parties sources. We cannot guarantee or give any warranty about the information provided. Interested parties must rely solely on their own enquiries.

**LJ Hooker Tumbi Umbi | Killarney  
Vale | Bateau Bay  
(02) 4389 1722**

\*Kitchen with plenty of storage, skylight and modern finishes and appliances including gas cooking.

\*Three good size bedrooms with walk in robe and ensuite to the main, and built ins to all other rooms and ceiling fans.

\*Sparkling bathroom with separate bath, shower and large vanity.

\*Internal laundry and linen storage.

Outside features a rear deck and northerly facing yard, that is the perfect size to entertain with minimal maintenance.

Storage is plentiful with a double lock up garage, plus enough space to park two more cars in the driveway.

The Location:

\* 500 m to Our Lady of the Rosary Catholic School 2261

\* 800 m to Shelly Beach and Golf course.

\* 1 km to Tuggerah Lakes Secondary College.

\* 2.7 kms drive to Bateau Bay Square.

\* 2.6 km to Bateau Bay Beach, Wyrabalong National Park and walking trails

\* Approximately 11 kms to Tuggerah Station, Westfield Tuggerah and M1 Motor way

Finished throughout with square set cornices, LED downlighting, hardwood flooring, louvered windows, carpet to the bedrooms and ready to move in and enjoy.

Conveniently located close to schools, shops, parks, and local beaches —offering the perfect balance of coastal lifestyle and everyday convenience.

Don't miss this opportunity to purchase a quality property in a blue-chip neighbourhood!

Be sure to contact Justin or Belinda today to arrange your own private viewing, or view as advertised.

**Disclaimer:** All information contained herein is gathered from sources we consider to be reliable, however we cannot guarantee or give any warranty about the information provided. All images, border/s, property boundaries and floor plans are indicative of the property and for illustrative purposes only. Any development potential stated herein is suggestive only and may be subject to relevant approvals, as such it is not to be relied upon. All distances and measurements are approximate. Interested parties must solely rely on their own enquiries.



**LJ Hooker Tumbi Umbi | Killarney  
Vale | Bateau Bay  
(02) 4389 1722**

**Disclaimer:** All information contained therein is gathered from relevant third parties sources. We cannot guarantee or give any warranty about the information provided. Interested parties must rely solely on their own enquiries.

## More About this Property

<b>Property ID</b>	WPDGJF
<b>Property Type</b>	DuplexSemi-detached
<b>Land Area</b>	320 m2

### Justin Bond 0406 999 007

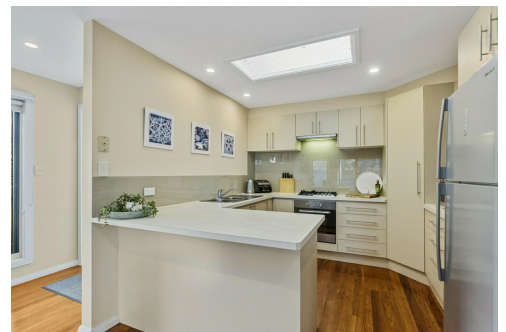
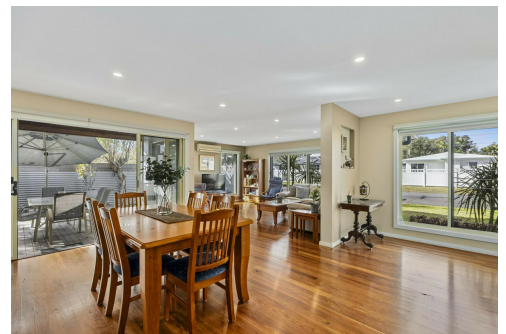
Principal - Licensee | [justin.bond@ljhooker.com.au](mailto:justin.bond@ljhooker.com.au)

### Belinda Bond 0400 544 557

Principal - Licensee | [belinda.bond@ljhooker.com.au](mailto:belinda.bond@ljhooker.com.au)

### LJ Hooker Tumby Umbi | Killarney Vale | Bateau Bay (02) 4389 1722

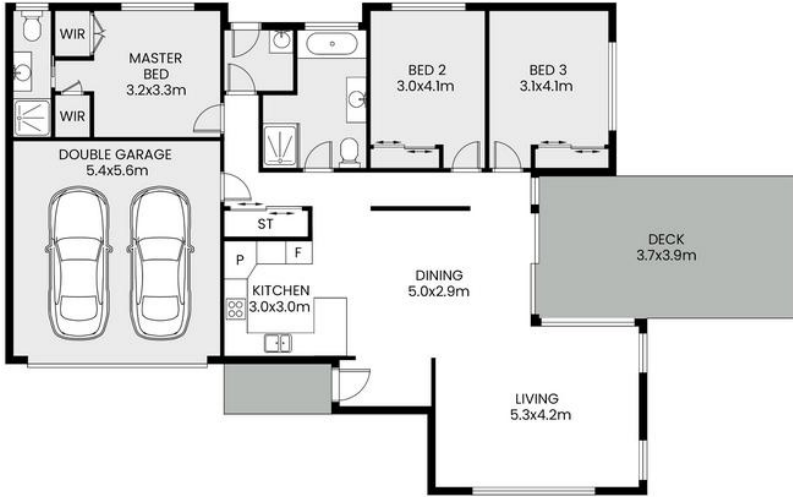
Shop 2, 140 Wyong Road, KILLARNEY VALE NSW 2261  
[tumbiumbi@ljhooker.com.au](mailto:tumbiumbi@ljhooker.com.au) | [tumbiumbi@ljhooker.com.au](mailto:tumbiumbi@ljhooker.com.au)



**Disclaimer:** All information contained therein is gathered from relevant third parties sources. We cannot guarantee or give any warranty about the information provided. Interested parties must rely solely on their own enquiries.

**LJ Hooker Tumby Umbi | Killarney  
Vale | Bateau Bay  
(02) 4389 1722**

# 48A Bonnieview Street Long Jetty



FLOOR PLAN



SITE PLAN

Scale in meter. Indicative only. Measurement and dimensions are approximate.  
All information contained herein is gathered from source we believe to be reliable.  
However we cannot guarantee its accuracy and interested persons should rely on their own enquiries.



APPROX. INT : 154m<sup>2</sup>



LJ Hooker Tumbi Umbi | Killarney  
Vale | Bateau Bay  
(02) 4389 1722

**Disclaimer:** All information contained therein is gathered from relevant third parties sources.  
We cannot guarantee or give any warranty about the information provided. Interested parties must rely solely on their own enquiries.