

Long Jetty, 4a Archbold Road

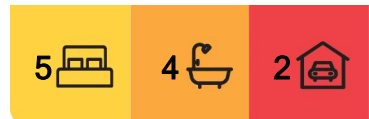
HEY THERE SAVVY INVESTORS

If you are on the lookout for a fantastic opportunity in the heart of Long Jetty, look no further than these neat and tidy investment flats making it a perfect rental investment.

Set on two separate titles the property comprises 3 x 1 bedroom and 1 x 2 bedrooms with their own courtyard area. They have easy access to public transport, clubs, restaurants, and cafes with flat 4 having water glimpses all within an easy stroll to surfing beaches and Tuggerah Lake.

Two of the flats have air conditioning keeping you cool in summer while warm in winter, while all have built in robes, providing ample storage facilities.

With a generous land area of 809m² with a 30 metre frontage, there is plenty of room, whether you want to develop further or simply enjoy the space as is.



For Sale
GUIDE \$1,900,000

View
By Appointment

Contact
Graeme Naughton
0415 900 865
gnaughton.theentrance@ljhooker.com.au



Disclaimer: All information contained therein is gathered from relevant third parties sources. We cannot guarantee or give any warranty about the information provided. Interested parties must rely solely on their own enquiries.

LJ Hooker The Entrance
(02) 4332 2555

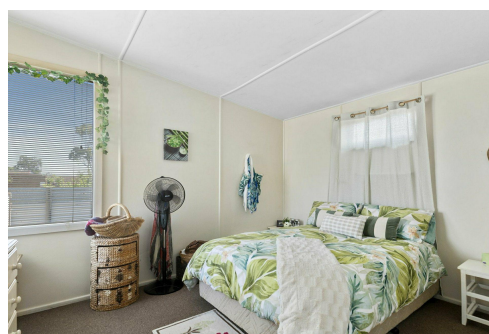
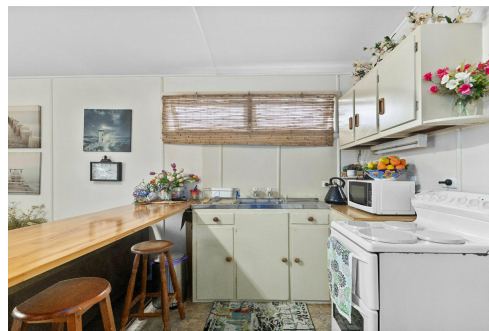
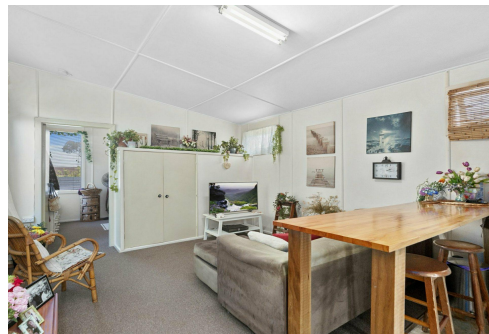
Reach out today to schedule a viewing and see for yourself why this property is the perfect addition to your investment portfolio.

More About this Property

Property ID	17GGF7M
Property Type	BlockOfUnits
Land Area	809 m ²
Including	Air Conditioning Toilets (5) Courtyard Balcony Built-in-Robes Fully Fenced

Graeme Naughton 0415 900 865
Salesperson | gnaughton.theentrance@ljhooker.com.au

LJ Hooker The Entrance (02) 4332 2555
213 The Entrance Road, THE ENTRANCE NSW 2261
theentrance.ljhooker.com.au | theentrance@ljhooker.com.au



LJ Hooker The Entrance
(02) 4332 2555

Disclaimer: All information contained therein is gathered from relevant third parties sources. We cannot guarantee or give any warranty about the information provided. Interested parties must rely solely on their own enquiries.