

6a Seaview Way, Long Beach

## Sunlight | Space | Coastal Living


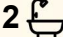

Positioned in a quiet cul-de-sac, these two modern duplexes offer contemporary design, generous outdoor space, and relaxed coastal living in one of the region's most sought-after beachside pockets. With high ceilings, open-plan interiors, east-facing entertaining decks, and water glimpses, they deliver the perfect blend of comfort, style, and lifestyle appeal.

The home features three bedrooms plus a study, two bathrooms and a powder room, and a second living space ideal for kids or guests. The spacious kitchen includes a walk-in pantry, wall oven, and induction cooktop, while the large master suite boasts a generous walk-in wardrobe. A garage with workshop space and internal access, plus a generous yard, completes the picture.

Just moments from the coast, you'll enjoy white sand, turquoise water, and a patrolled beach, ideal for swimming, walking, kayaking, paddle boarding, and snorkelling. A rare opportunity to secure a brand-new home in a peaceful location with true lifestyle appeal.

### Features

- Quiet cul-de-sac position
- High ceilings and open-plan living flowing to east-facing entertaining decks

3  2  1 

**FOR SALE**  
Contact Agent

### AGENTS

Michael Godfrey  
0408 662 138  
michael.godfrey@ljhwollongong.com.au

### AGENCY

LJ Hooker Wollongong | Corrimal |  
Shellharbour  
(02) 4229 8600

All information contained therein is gathered from relevant third parties sources.  
We cannot guarantee or give any warranty about the information provided.  
Interested parties must rely solely on their own enquiries.

 **LJ Hooker**

- Modern kitchen with walk-in pantry, wall oven, and induction cooktop
- Three bedrooms plus study
- Two bathrooms plus powder room
- Second living space perfect for kids or guests
- Large master suite with walk-in wardrobe
- Garage with workshop space and internal access
- Generous yard for kids, pets, or entertaining
- " Water glimpses and coastal breezes
- " Minutes to the beach, cafés, and local conveniences

## MORE DETAILS

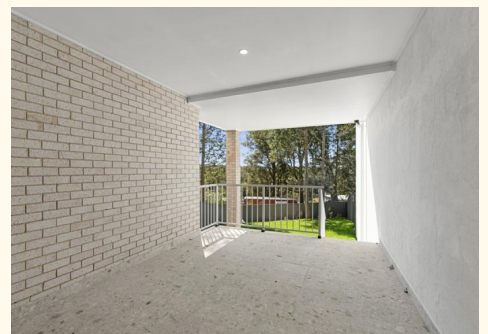
Property ID	W67HQZ
Property Type	DuplexSemi-detached
Land Area	537 m2
Including	Ensuite Ducted Cooling Ducted Heating Toilets (3) Courtyard Balcony Outdoor Entertaining Floorboards Built-in-Robes Secure Parking Fully Fenced Remote Garage

### Michael Godfrey 0408 662 138

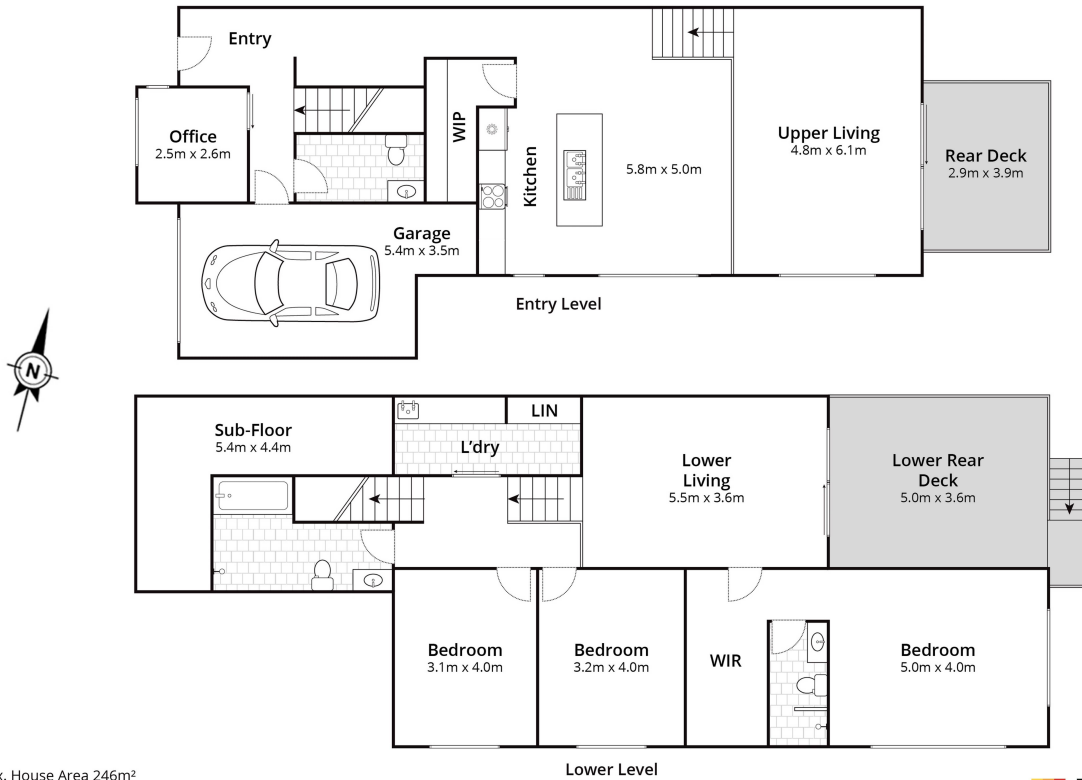
Real Estate Agent | [michael.godfrey@ljhwollongong.com.au](mailto:michael.godfrey@ljhwollongong.com.au)

### LJ Hooker Wollongong | Corrimal | Shellharbour (02) 4229 8600

69 Kembla Street, WOLLONGONG NSW 2500  
[wollongong.ljhooker.com.au](http://wollongong.ljhooker.com.au) | [wollongong@ljhooker.com.au](mailto:wollongong@ljhooker.com.au)



## 6B Seaview Way, Long Beach



Approx. House Area 246m<sup>2</sup>

Whilst every effort has been made to ensure the accuracy of the floor plan depicted here, measurements are approximate and no responsibility is taken for any error, omission, or mis statement. This plan is for illustrative purposes only.

 LJ Hooker