



75 Timor Avenue, Loganholme

Perfectly positioned in a quiet, family-friendly street between Cornubia and Loganholme.

CONTRACT CRASHED, THEIR LOSS, YOUR GAIN. DON'T MISS THIS ONE AGAIN. BE QUICK!




This property sits on 2003 m², it offers a rare blend of space, lifestyle, and future potential.

Whether you're looking to move straight in and enjoy this well-maintained modern home, extend, or develop - the possibilities are endless:

1. Retain the existing home and extend to suit a growing family and create your dream residence
2. Subdivide the land into three blocks, or
3. Explore the development potential for 6-8 townhouses (Subject to Council Approval)

Ideally located just minutes from both Cornubia Shopping Centre and the Logan Hyperdome —a bustling hub of retail, dining, and public transport —and less than 30 minutes to either the Gold Coast or Brisbane Airport.

Families will also appreciate the proximity to a range of top-tier

3  1  4 

FOR SALE
Contact Agent

AGENTS

Ani Jones
0407771997
ani.jones@ljhooker.com.au

AGENCY

LJ Hooker Shailer Park
(07) 3102 0829

All information contained therein is gathered from relevant third parties sources.
We cannot guarantee or give any warranty about the information provided.
Interested parties must rely solely on their own enquiries.

 **LJ Hooker**

schools and colleges, including Chisholm Catholic College, St Matthew's, Kimberley Park State School, and John Paul College.

Property Features —75 Timor

- Perfectly positioned in a quiet street between Cornubia and Loganholme
- storey layout with spacious design
- 3 bedrooms
- 2 separate living areas for flexible family living
- Well-appointed modern kitchen with gas stove & electric oven
- Kitchen overlooks poolside entertaining area and garden
- " 1 bathroom and 2 separate toilets
- metre saltwater swimming pool with a 2.4m deep end —wow factor!
- " Massive 4 car lock-up garage
- " Expansive 2,003m² fully fenced block
- " 6m x 4m separate entertainment room —ideal for pool table, granny flat, or teen retreat
- 3m x 3m garden shed for extra storage
- 6m x 6m double garage shed

- Ceiling fans and air conditioning in all rooms
- Two 5,000-litre water tanks
- Hot water system installed
- Solar Panels

- " Manicured, low-maintenance gardens throughout
- " Room for boats, caravans, trailers —all secure and tucked away
- Subdivision potential: retain existing home or develop 6-8 townhouses (subject to council approval)

- " Exceptional condition —lovingly maintained inside and out

MORE DETAILS

Property ID	68RHVG
Property Type	House
House Size	88 m ²
Land Area	2003 m ²

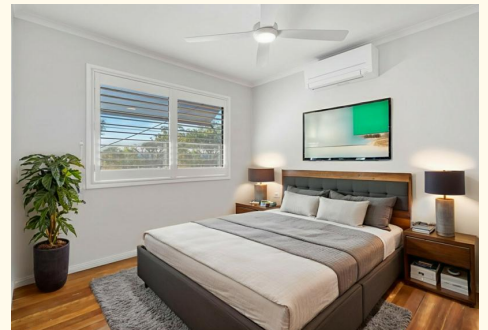
Ani Jones 0407771997

Sales Agent | ani.jones@ljhooker.com.au

LJ Hooker Shailer Park (07) 3102 0829

2/3 Mandew Street, SHAILER PARK QLD 4128

shailerpark.ljhooker.com.au | shailerpark@ljhooker.com.au





75 Timor Avenue **LOGANHOLME**



3 | 1 | 7 | 325m²

All dimensions are approximate; they are subject to errors and inaccuracies and no liability will be accepted. Plans are shown for marketing purposes only.

All information contained therein is gathered from relevant third parties sources. We cannot guarantee or give any warranty about the information provided. Interested parties must rely solely on their own enquiries.

