



17 Garrima Drive, Loganholme

## Another one sold by Neil!

Positioned in the heart of Loganholme, this well-presented highset brick home offers space, functionality and timeless appeal. Featuring three generously sized bedrooms, all complete with built-in wardrobes, this property is ideal for families, first-home buyers or savvy investors.


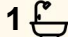

The home showcases polished timber floors throughout, with a separate lounge and dining area providing comfortable and flexible living spaces. The large kitchen is well-equipped perfect for everyday living and entertaining.

Enjoy relaxing on the front veranda or make use of the rear stairs leading to the spacious backyard, offering plenty of room for kids, pets or future improvements. Downstairs, a double lock-up garage with ample storage under the home adds further practicality.

Set on a generous 740m<sup>2</sup> allotment, this solid home presents an excellent opportunity in a convenient Loganholme location.

Features include:

- 3 oversized bedrooms with built-ins
- Polished timber floors
- Separate lounge and dining areas

3  1  2 

### FOR SALE

Price Guide \$900,000 to \$950,000

### AGENTS

Neil Cowan

0432 468 439

[ncowan.shailerpark@ljhooker.com.au](mailto:ncowan.shailerpark@ljhooker.com.au)

### AGENCY

LJ Hooker Shailer Park

(07) 3102 0829

All information contained therein is gathered from relevant third parties sources. We cannot guarantee or give any warranty about the information provided. Interested parties must rely solely on their own enquiries.

 **LJ Hooker**

- Large kitchen with new oven & cooktop
- Front verandah and rear yard access
- " Lock-up garage with under-house storage
- " 740m<sup>2</sup> block

A quality home with space, comfort and potential - don't miss this opportunity.

Disclaimer: We have in preparing this disclosure used our best endeavours to ensure that the information contained herein is true and accurate. No responsibility will be accepted for any and all liability in respect of errors, omissions, Photos, inaccuracies or misstatements. Buyers are responsible to carry out their own research.

## MORE DETAILS

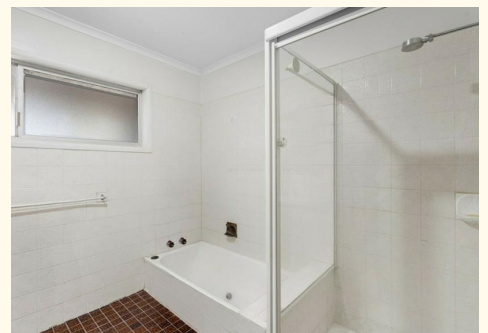
Property ID	6APHVG
Property Type	House
House Size	105 m2
Land Area	740 m2

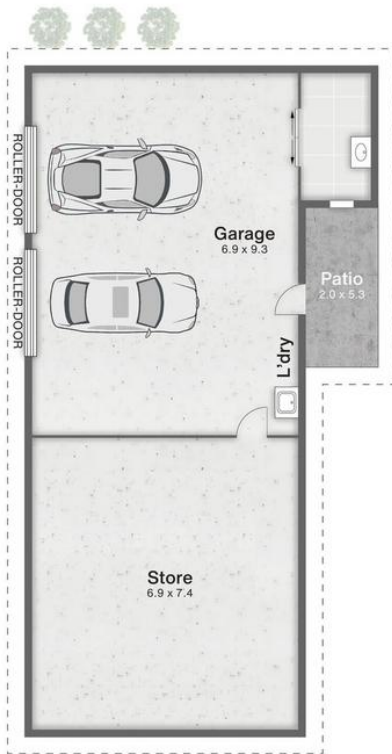
### Neil Cowan 0432 468 439

Licensee | [ncowan.shailerpark@ljhooker.com.au](mailto:ncowan.shailerpark@ljhooker.com.au)

### LJ Hooker Shailer Park (07) 3102 0829

2/3 Mandew Street, SHAILER PARK QLD 4128  
[shailerpark.ljhooker.com.au](http://shailerpark.ljhooker.com.au) | [shailerpark@ljhooker.com.au](mailto:shailerpark@ljhooker.com.au)





GROUND FLOOR



FIRST FLOOR



17 Garrima Drive LOGANHOLME

3 | 1 | 2 | 250m<sup>2</sup>

**LJ Hooker**

All dimensions are approximate; they are subject to errors and inaccuracies and no liability will be accepted. Plans are shown for marketing purposes only.