



38 Lake Borumba Street, Logan Reserve

Family Living in Logan Reserve: Spacious, Secure & Convenient!

Enjoy the comfort & convenience of this delightful four-bedroom family home, perfectly positioned in a great location in Logan Reserve. Offering a blend of spacious living, security, & functional features, this property is ideal for a growing family looking for ease of access to schools & essential amenities. Positioned on a generous 514m² fully fenced, flat block, this 2005-built residence is waiting for the right family to call it home or a savvy investor to add to their portfolio.

Features & Benefits:

- Four Good Sized Bedrooms: Ample space for the whole family, with privacy & comfort.
- All bedrooms include built-in wardrobes, offering excellent storage solutions to keep rooms tidy & organised.
- Conditioned Living Area: Temperature control & comfort in a prime spot for year-round relaxation.
- Separate Dining Space: A designated area for family meals,

All information contained therein is gathered from relevant third parties sources. We cannot guarantee or give any warranty about the information provided. Interested parties must rely solely on their own enquiries.

4 2 2

FOR SALE

Offers over \$799,000

AGENTS

Trina Wilson
0427 188 500
trina.wilson@ljhbeenleigh.com.au

Santosh Vajjala
0459 966 749
santosh.vajjala@ljhbeenleigh.com.au

AGENCY

LJ Hooker Beenleigh
(07) 3807 7900



conveniently located next to the kitchen.

- **Roomy Kitchen:** Offers plenty of bench space for great functionality & easy meal preparation.
- **Four bedrooms:** Includes a main bedroom & ensuite, providing extra convenience & privacy.
- **Concrete Patio Area:** A great spot to relax outside & enjoy the sunshine.
- **Large, Fully Fenced Backyard:** Provides a safe & secure space for children & pets to play freely.

Location & Convenience:

- **Set in a quiet family area** surrounded by similar style houses, this home offers unbeatable access to local facilities.
- **School Proximity:** Catchment Marsden Primary School and Marsden State High School within easy walking distance.
- **Essential Amenities:** Shopping, medical, & day care facilities are also conveniently close by.

This is an excellent opportunity to secure a spacious and practical rental property or family home -in a highly sought-after location.

MORE DETAILS

| | |
|---------------|---------|
| Property ID | 1X7TGRF |
| Property Type | House |
| Land Area | 514 m2 |

Trina Wilson 0427 188 500

Director & Sales Manager | trina.wilson@ljhbeenleigh.com.au

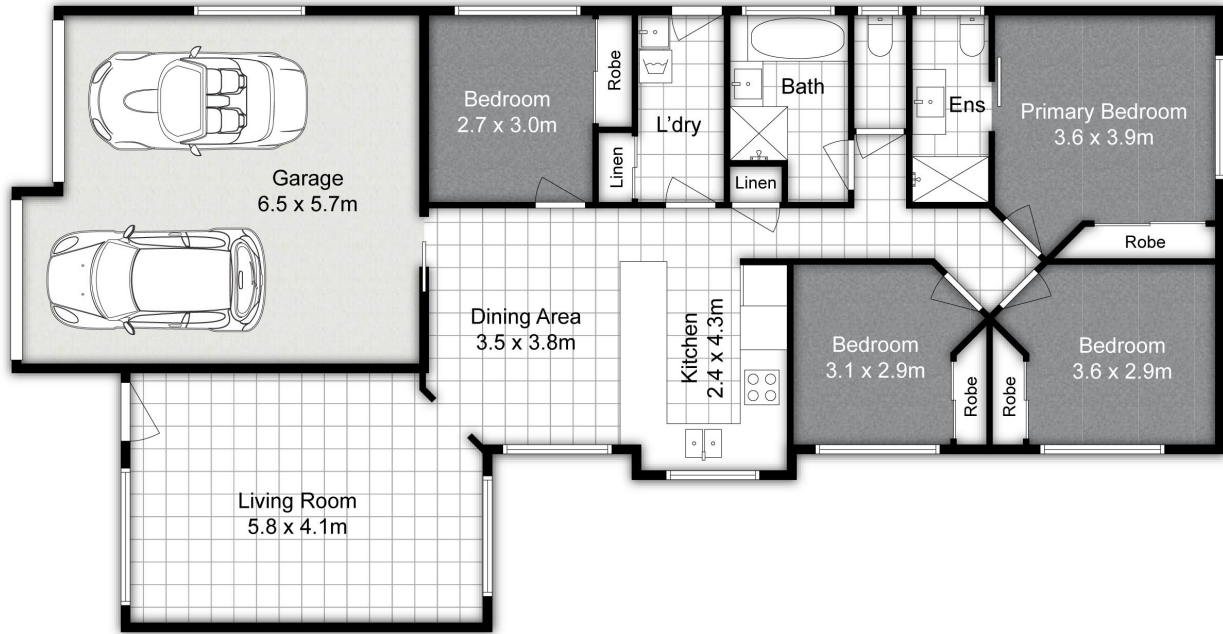
Santosh Vajjala 0459 966 749

Sales Associate to Trina Wilson | santosh.vajjala@ljhbeenleigh.com.au

LJ Hooker Beenleigh (07) 3807 7900

14-16 James Street, BEENLEIGH QLD 4207
beenleigh.ljhooker.com.au | bso@ljhbeenleigh.com.au





38 LAKE BORUMBA, LOGAN RESERVE

Trina Wilson - 0427 188 500



Internal: 149m² | External: 10m² | Total: 159m²

Whilst every attempt has been made to ensure the accuracy of the floor plan contained here, measurements of doors, windows, rooms and any other item are approximate and no responsibility is taken for any error, omission, or misstatement. This plan is for illustrative purposes only and should only be used as such by any prospective purchaser.

