

16 Tanzanite Avenue, Logan Reserve

Nest or Invest in the Heart of Stoneleigh Reserve!

Perfectly positioned in the highly sought-after Stoneleigh Reserve Estate, this stylish and modern family home combines comfort, convenience, and contemporary living - all within walking distance to local schools, parks, and walking trails. Designed with families in mind, this near-new residence offers a spacious layout, quality finishes, and a peaceful lifestyle surrounded by nature while still being close to all amenities.

Property Features:

Four generous bedrooms, each with built-in robes and ceiling fans
Master bedroom complete with ensuite, air conditioning, and walk-in robe

Two modern bathrooms, designed for practicality and comfort
Spacious open-plan living and dining area, perfect for entertaining or relaxing

Separate media room ideal for family movie nights or a kids' retreat
Dedicated study with built-in desk - perfect for remote work or study
Modern kitchen featuring stone benchtops, stainless steel appliances, and a dishwasher

Air conditioning to the living area and master bedroom for year-round comfort

4 2 2

FOR SALE
Contact Agent

AGENTS

Neeraj Malik
0428 445 155
nmalik@ljhcomplete.com.au

George Panopoulos
0429 111 021
gpanopoulos@ljhcomplete.com.au

AGENCY

LJ Hooker Property Complete
1300 360 388

All information contained therein is gathered from relevant third parties sources.
We cannot guarantee or give any warranty about the information provided.
Interested parties must rely solely on their own enquiries.

LJ Hooker

Covered alfresco area overlooking the private, low-maintenance backyard - ideal for BBQs and outdoor living.
Double remote lock-up garage with internal access.
Security screens and doors throughout for peace of mind
High-speed fibre optic internet, phone, and Pay TV connectivity

Lifestyle & Location:

Stoneleigh Reserve is one of Logan's most desirable family-friendly estates - a hidden gem surrounded by leafy parklands, walking paths, and open green spaces. Enjoy a true sense of community where children play safely, and families connect.

Within minutes, you'll find:

Marsden State High School (one of Queensland's top performing public schools)
Logan Reserve State School and Marsden State School
Marsden Park Shopping Centre and Logan Central Plaza, offering supermarkets, cafes, and essential services
New developments nearby, including upcoming retail and childcare facilities, adding further value and convenience
Easy access to motorways, connecting you quickly to Brisbane, Gold Coast, and surrounding areas

This property offers the perfect balance between suburban tranquillity and urban convenience - ideal for families, first home buyers, or investors looking to secure a home in a high-growth location.

Don't Miss Out!

Homes in Stoneleigh Reserve are in high demand. Contact Neeraj or George from LJ Hooker Property Complete today to arrange your inspection and experience the lifestyle this beautiful estate has to offer.

Disclaimer:

Property images may have been digitally altered or staged for marketing purposes and may not constitute a complete representation of the property condition being purchased. Any photographs used by LJ Hooker may only show certain aspects of the property at the time the photographs are taken and any prospective buyer should inspect the property.

MORE DETAILS

Property ID	20S3HGS
Property Type	House
Land Area	341 m2
Including	Air Conditioning Dishwasher Built-in-Robes Fully Fenced Remote Garage

Neeraj Malik 0428 445 155

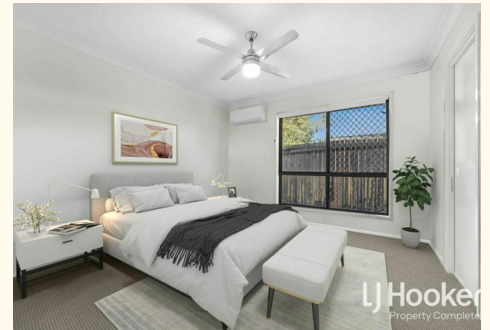
Sales Consultant | nmalik@ljhcomplete.com.au

George Panopoulos 0429 111 021

Sales Consultant | gpanopoulos@ljhcomplete.com.au

LJ Hooker Property Complete 1300 360 388

Level 1, 32 Everglade Street, YARRABILBA QLD 4207
propertycomplete.ljhooker.com.au | admin@ljhcomplete.com.au



16 Tanzanite Avenue, Logan Reserve



4 | 2 | 2 | 181 Sqm |

Total approx area includes outside covered areas



Whilst every attempt has been made to ensure the accuracy of the floorplan shown, all measurements, positioning, fixtures, fittings and any other data shown are an approximate interpretation for illustrative purposes only and are not to scale. No responsibility is taken for any error, omission, miss-statement or use of data shown

All information contained therein is gathered from relevant third parties sources. We cannot guarantee or give any warranty about the information provided. Interested parties must rely solely on their own enquiries.

