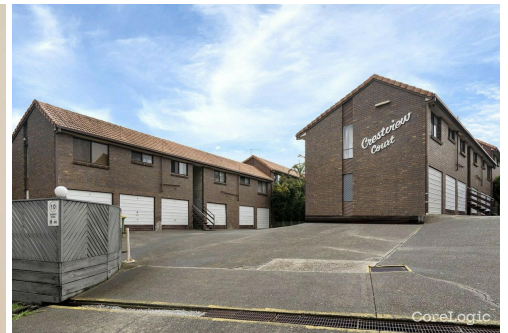
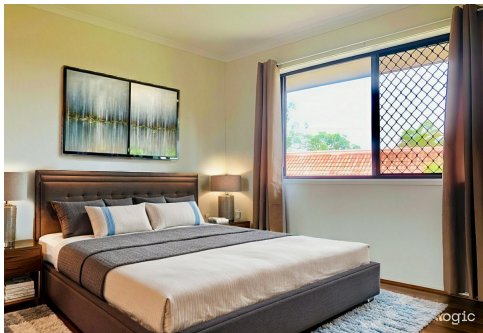




CoreLogic



## Logan Central, 40/279-283 Kingston Road

### 3 Bedroom investment

Proudly presenting this neat and tidy unit that is located only 30mins to the Brisbane CBD

Enjoy the convenient lifestyle offered by this central location. Walk to the bus stop or shops or simply enjoy the pool after a hard day's work, without the need to do any of the maintenance.

Situated in a very handy location.

Check out these features;

- \*3 Bedrooms
- \*New Hybrid Flooring
- \*Single lockup garage
- \*Open plan kitchen dining lounge
- \*Fan forced oven and range hood



**Disclaimer:** All information contained therein is gathered from relevant third parties sources. We cannot guarantee or give any warranty about the information provided. Interested parties must rely solely on their own enquiries.



**For Sale**  
Interest over \$370,000

**View**  
By Appointment

**Contact**  
**Neil Cowan**  
0432 468 439  
ncowan.shailerpark@ljhooker.com.au

**LJ Hooker Shailer Park**  
**(07) 3102 0829**

- \*Modern Bathroom
- \*Pool and spa in complex
- \*Body Corporate fees approx \$1060 per quarter
- \*Rental appraisal of \$420 per week

Location Highlights:

- 950m to Bus
- 1.2km to Mabel Park primary & High School's
- 700m to Logan Central Plaza
- 3.1km to Kingston train station
- 26km to Brisbane CBD
- 50min to Gold Coast
- Easy access to Logan Motorway/M1

## More About this Property

Property ID	62EHVG
Property Type	Unit

**Neil Cowan 0432 468 439**

Licensee | [ncowan.shailerpark@ljhooker.com.au](mailto:ncowan.shailerpark@ljhooker.com.au)

**LJ Hooker Shailer Park (07) 3102 0829**

2/3 Mandew Street, SHAILER PARK QLD 4128  
[shailerpark.ljhooker.com.au](mailto:shailerpark.ljhooker.com.au) | [shailerpark@ljhooker.com.au](mailto:shailerpark@ljhooker.com.au)



**LJ Hooker Shailer Park**  
**(07) 3102 0829**

**Disclaimer:** All information contained therein is gathered from relevant third parties sources.  
We cannot guarantee or give any warranty about the information provided. Interested parties must rely solely on their own enquiries.