

61 Fulham Park Drive, Lockleys

"Location & Lifestyle GOLD!" Metres To Linear Park

Positioned in a tightly held blue chip pocket of Lockleys, just metres from Linear Park, this exceptional 762sqm approx. prime landholding presents an outstanding opportunity & lifestyle rich location for the discerning buyer, between Adelaide City & Henley Beach.


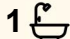
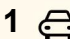
Beautifully set near quality modern homes and framed by Basket Range frontage, this blank canvas offers exciting scope to move in & enhance, there's room to extend capitalising on prized northern light, invest, or secure the site to build your dream home(stnc)... whatever option, you're on a Winner here.

The existing home comprises a spacious light filled a/c lounge with french doors, separate dining, some polished floors, 3 generous bedrooms, original kitchen/dining area, an original bathroom, plus the convenience of a second WC.

Enjoy river walks or cycle at leisure, just metres from home, explore the nearby Wetlands with abundant birdlife, or simply embrace the peace and prestige of this sought after riverside address.

Perfectly positioned just minutes from:

All information contained therein is gathered from relevant third parties sources. We cannot guarantee or give any warranty about the information provided. Interested parties must rely solely on their own enquiries.

3  1  1 

FOR SALE

Please Call

AGENTS

David Blight
0419 820 423
dblight@ljhfp.com.au

AGENCY

LJ Hooker Flinders Park
(08) 8352 1155

 **LJ Hooker**

The Adelaide CBD & the iconic Adelaide Oval
The vibrant cafe culture of Henley Square
Shopping at Harbour Town & the revitalised Bay
The beautiful sands of Henley & Grange Beaches
Prestigious Kooyonga Golf Club
Lockleys Oval, quality local schools, a preschool, cafes & public transport

This is a rare opportunity to secure a quality asset on a generous allotment, in one of Adelaide's most desirable lifestyle corridors.

Bring your vision. Build your future. Create your forever home.

'A Smart Choice'....61 Fulham Park Drive!

For more Information please contact David Blight on 0419820423

Disclaimer:

Whilst every effort has been made to ensure the accuracy of these particulars, no warranty is given by the vendor or the agent as to their accuracy. Interested parties should not rely on these particulars as representations of fact but must instead satisfy themselves by inspection or otherwise.

RLA 215339

MORE DETAILS

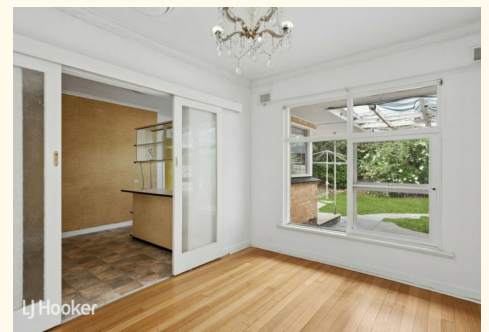
Property ID	JQ3H67
Property Type	House
Land Area	762 m2
Including	Air Conditioning Toilets (2) Floorboards

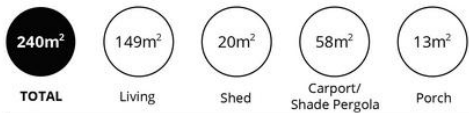
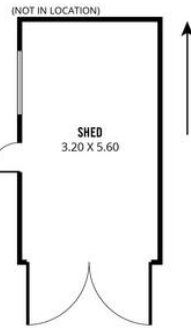
David Blight 0419 820 423

Property Consultant | dbleight@ljhfp.com.au

LJ Hooker Flinders Park (08) 8352 1155

Suite 2/166-168 Grange Road, FLINDERS PARK SA 5025
flinderspark.ljhooker.com.au | flinderspark@ljhfp.com.au





Scale in metres. This drawing is for illustration purposes only. All measurements are approximate and details intended to be relied upon should be independently verified.

Produced by The Fotobase Group