



## Lochinvar, 19 Springfield Drive

Near New, We're Ready... Are You?!

Cleverly designed to accommodate the growing family, this well-appointed home features four spacious bedrooms. The master suite offers a walk-in robe and a sleek ensuite, while the remaining bedrooms all include built-in robes for ample storage. A separate media room provides a quiet escape from the main living areas, perfect for movie nights or relaxing downtime.

The family bathroom is equally well-presented, featuring a deep bathtub and separate shower, offering both style and functionality.

For those who love to cook, the modern kitchen is a standout with stainless steel appliances, gas cooktop, and an electric oven, all complemented by ample cupboard space and a walk-in pantry. This space flows seamlessly into the light-filled, open-plan living and dining area, which opens out to the tiled undercover alfresco — a perfect spot to unwind while watching the kids enjoy the fully fenced, low-maintenance yard.



**Disclaimer:** All information contained therein is gathered from relevant third parties sources. We cannot guarantee or give any warranty about the information provided. Interested parties must rely solely on their own enquiries.



**For Sale**  
\$749,000

**View**  
[ljhooker.com.au/1DMGF6H](http://ljhooker.com.au/1DMGF6H)

**Contact**  
**Ben Cotton**  
0434 638 822  
[bcotton.maitland@ljhooker.com.au](mailto:bcotton.maitland@ljhooker.com.au)

**LJ Hooker Maitland**  
**(02) 4933 5511**

The home is packed with additional features, including ducted air conditioning throughout for year-round comfort, a double garage with internal and external access, and a dedicated children's activity area and study nook conveniently located between the rear bedrooms, ideal for working or studying from home.

Located just steps from local bus stops and directly across from a vibrant park, this home offers the perfect balance of convenience and family-friendly living. With Maitland CBD, local schools, and easy access to the Hunter Expressway and Vineyards just a short drive away, this home is positioned for both lifestyle and practicality.

Proudly marketed by LJ Hooker Maitland, please call exclusive agent Ben Cotton 0434 638 822 - 7 days for all inspections & further information.

All information contained herein is gathered from sources we deem to be reliable. However, we cannot guarantee its accuracy and interested persons should rely on their own enquiries.

## More About this Property

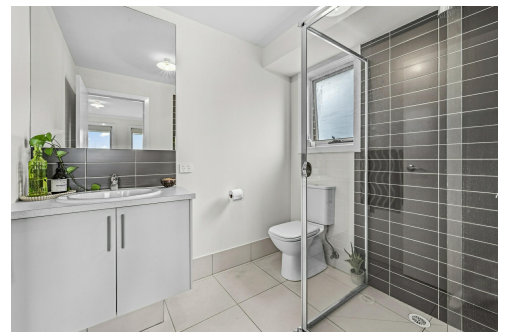
<b>Property ID</b>	1DMGF6H
<b>Property Type</b>	House
<b>Land Area</b>	508 m <sup>2</sup>
<b>Including</b>	Ensuite Air Conditioning Toilets (2) Built-in-Robes Carpeted Close to Schools Close to Shops Close to Transport

### Ben Cotton 0434 638 822

Licensed Real Estate Agent & Auctioneer | [bcotton.maitland@ljhooker.com.au](mailto:bcotton.maitland@ljhooker.com.au)

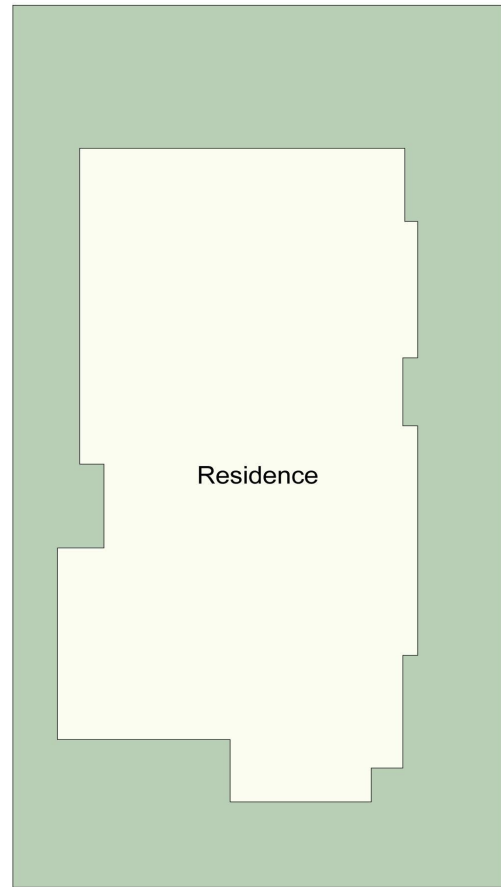
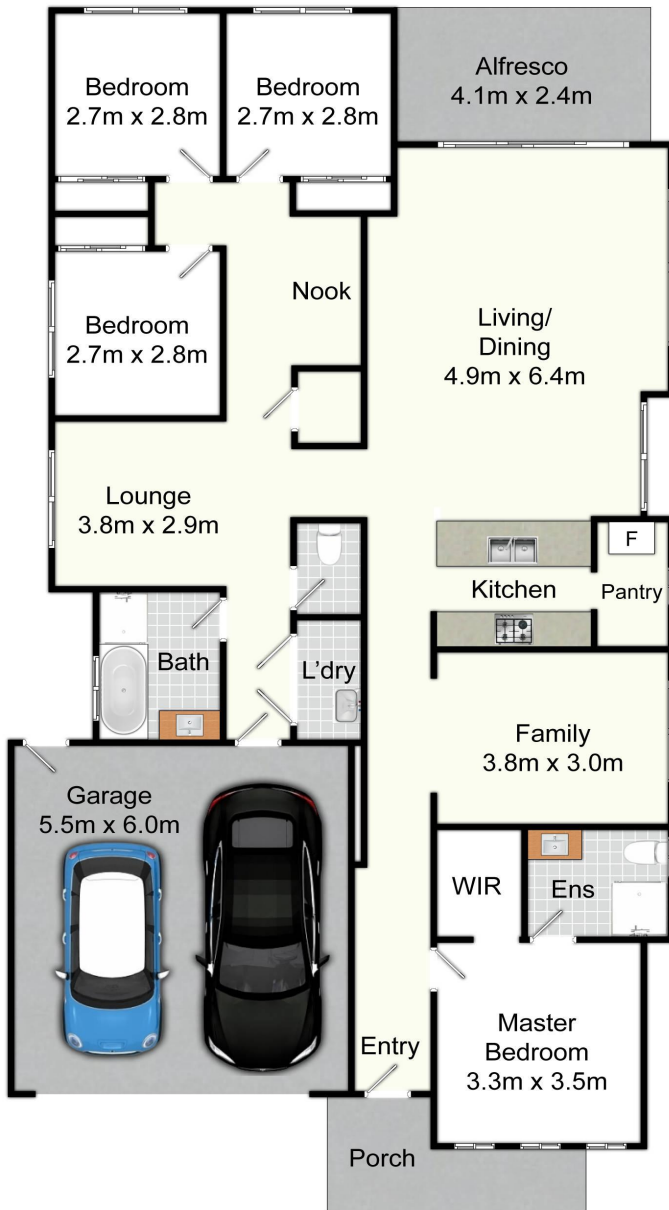
### LJ Hooker Maitland (02) 4933 5511

24 Ken Tubman Drive, MAITLAND NSW 2320  
[maitland.ljhooker.com.au](http://maitland.ljhooker.com.au) | [maitland@ljhooker.com.au](mailto:maitland@ljhooker.com.au)

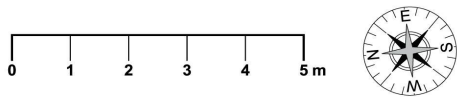


**LJ Hooker Maitland**  
**(02) 4933 5511**

**Disclaimer:** All information contained therein is gathered from relevant third parties sources. We cannot guarantee or give any warranty about the information provided. Interested parties must rely solely on their own enquiries.



Site Plan  
Not To Scale



## 19 Springfield Dr, Lochinvar

All information contained herein is gathered from sources we deem reliable. However, we cannot guarantee its accuracy and act as a messenger only in passing on the details. Interested parties should rely on their own inquiries and the contract for sale. The floor plans are artist's impressions only. The site plan is not to scale.



LJ Hooker Maitland  
(02) 4933 5511

**Disclaimer:** All information contained therein is gathered from relevant third parties sources. We cannot guarantee or give any warranty about the information provided. Interested parties must rely solely on their own enquiries.