



10/25 Mill Road, Liverpool

Low-Maintenance Living in the Heart of Liverpool

Positioned on the first floor, this well-presented two-bedroom unit offers an outstanding opportunity for investors or first home buyers alike, with quality tenants already secured for immediate rental return. With timber flooring throughout; one bedroom includes built-in robes, while a split system air conditioner ensures year-round comfort. The spacious kitchen is well-appointed with ample storage and flows effortlessly through to the living and dining area. With an internal laundry and single lock-up garage adding further convenience. Ideally located just a short walk to Liverpool train station, Westfield Shopping Centre, bus stops, schools and local parks, this is a smart addition to any portfolio or an ideal entry into the market.

• Approx.

^ Subject to Council Approval.

Webpage enquiries must include a contact number and email address to receive a response. Photo ID is required for all inspections. While care has been taken in presenting this information, prospective purchasers should confirm details independently.

2 🏠 1 🚿 1 🚗

FOR SALE
\$445,000

AGENTS

Mitchell Crawford
0421 504 007
mitchell@ljhuntedgroup.com.au

Tanisha McKenzie
0437 154 019
tanisha@ljhuntedgroup.com.au

AGENCY

LJ Hooker United Group
1800 486 4833

All information contained therein is gathered from relevant third parties sources. We cannot guarantee or give any warranty about the information provided. Interested parties must rely solely on their own enquiries.



MORE DETAILS

Property ID V2J1T
Property Type Unit

Mitchell Crawford 0421 504 007

Principal | mitchell@ljhuntedgroup.com.au

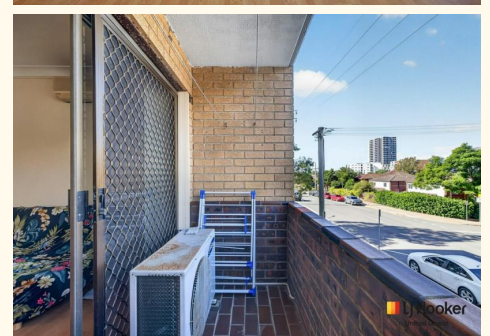
Tanisha McKenzie 0437 154 019

Sales Executive | tanisha@ljhuntedgroup.com.au

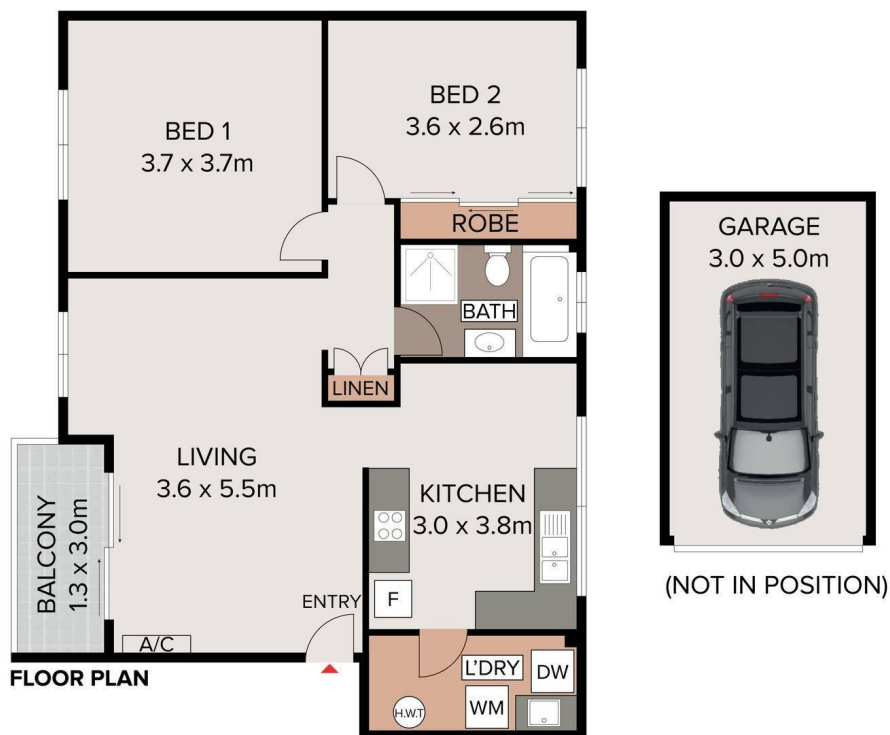
LJ Hooker United Group 1800 486 4833

41 Wentworth Road, BRINGELLY NSW 2556

unitedgroup.ljhooker.com.au | reception@ljhuntedgroup.com.au



All information contained therein is gathered from relevant third parties sources.
We cannot guarantee or give any warranty about the information provided.
Interested parties must rely solely on their own enquiries.



10/25 Mill Rd, Liverpool

Disclaimer: Floor plans and site plans are intended as a guide only. They are not part of any legal document or title and are subject to errors, omission, and inaccuracies and should not be used as reference. Sizes and dimensions are approximate only. Interested parties should make their own enquiries. Floor plan by: Flex Media