

## Liverpool, 113 Elizabeth Drive

### Dual Income Opportunity & R3 Zoning + Sleepouts

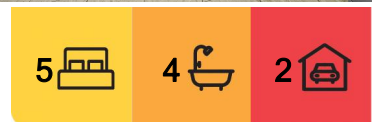
A rare and profitable opportunity in an R3 Zoned area & perfect for savvy investors or extended families looking for strong returns and future development potential (STCA). This property features three separate rental dwellings, all generating income individually & with a combined rental return of over \$1,300 per week!

#### Main House:

- 3 bedrooms
- Open plan kitchen and meals area
- Separate living and dining areas plus an additional second living space
- Split system air conditioning
- Double carport with space for two vehicles

#### Two Additional Dwellings:

- 2 x self-contained sleepout houses



#### Auction

Sat 13th Sep @ 12:00PM

#### View

Sat 13th Sep @ 11:30AM - 12:30PM

#### Contact

**Ilice Dimeski**

0424 198 337

[ildimeski.casula@ljhooker.com.au](mailto:ildimeski.casula@ljhooker.com.au)

**LJ Hooker Casula**  
(02) 9601 8333

**Disclaimer:** All information contained therein is gathered from relevant third parties sources. We cannot guarantee or give any warranty about the information provided. Interested parties must rely solely on their own enquiries.



Each with private access, kitchen, bathroom, and living space

Location Highlights:

Bus stop right at your doorstep

Close to major hospitals, local schools, and other public transport options

Minutes to Westfield shopping centre, parks, and essential amenities

Set on a generous block with R3 zoning, this is an ideal buy-and-hold opportunity with excellent cash flow and long-term development upside.

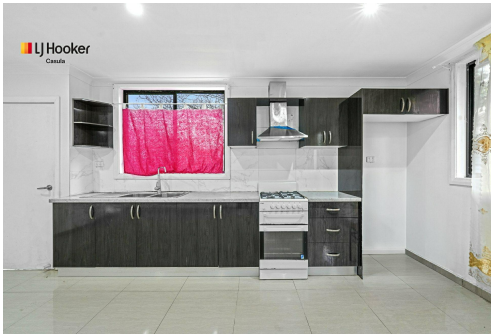
Enquire now &ndash; secure a high-yield property in a prime location!

More About this Property

Property ID	ZKHGRH
Property Type	House
Land Area	557.4 m2
Including	Air Conditioning Toilets (4) Built-in-Robes Secure Parking Fully Fenced

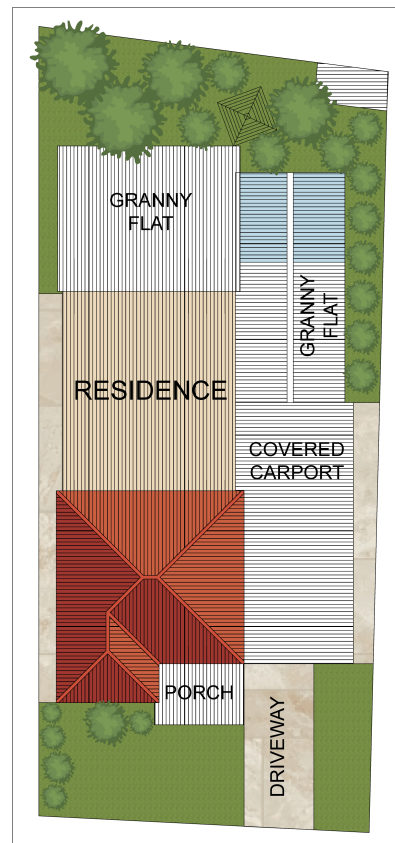
Ilce Dimeski 0424 198 337  
Principal | idimeski.casula@ljhooker.com.au

LJ Hooker Casula (02) 9601 8333  
62 Marsh Parade, CASULA NSW 2170  
casula.ljhooker.com.au | casula@ljhooker.com.au



**Disclaimer:** All information contained therein is gathered from relevant third parties sources. We cannot guarantee or give any warranty about the information provided. Interested parties must rely solely on their own enquiries.

LJ Hooker Casula  
(02) 9601 8333



SITE PLAN



## 113 Elizabeth Drive, Liverpool

Disclaimer: This floor plan is used for marketing purposes only and is subject to errors and inaccuracy. The marketing Agent & Maraj Media will not accept any liability. Interested parties should make and rely on their own enquiries.



**LJ Hooker Casula**  
(02) 9601 8333

**Disclaimer:** All information contained therein is gathered from relevant third parties sources. We cannot guarantee or give any warranty about the information provided. Interested parties must rely solely on their own enquiries.