

Liverpool, 102/387 Macquarie Street

Prime location in the heart of Liverpool

Nestled in the heart of LIVERPOOL, this spacious two-bedroom apartment combines luxury contemporary fittings and convenience of indulging in the many restaurants, parks and shopping centres right at your doorstep.

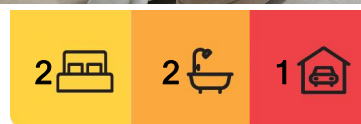
Enjoy interiors that utilize space, maximize natural light and cater to an atmospheric experience, extending seamlessly to a private balcony for optimal indoor and outdoor entertainment.

Other Features:

- Open Plan Living and Dining
- Built-In Wardrobes
- Security Building
- Video Intercom Access
- Split system Air-Conditioning



Disclaimer: All information contained therein is gathered from relevant third parties sources. We cannot guarantee or give any warranty about the information provided. Interested parties must rely solely on their own enquiries.



For Sale
Please Call

View
ljhooker.com.au/Z8AGRH

Contact
Iice Dimeski
0424 198 337
idimeski.casula@ljhooker.com.au

LJ Hooker Casula
(02) 9601 8333

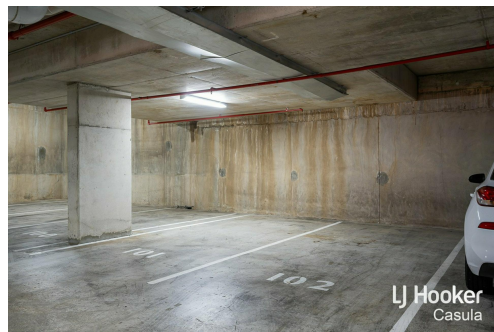
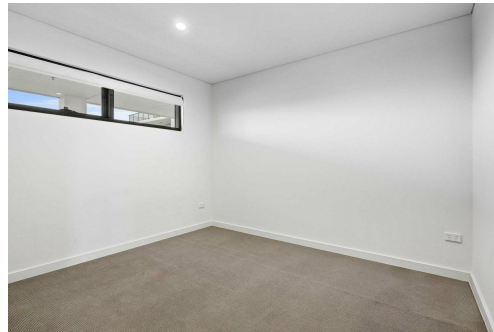
- European Gas Cooking Appliances
- Modern Finishes
- Secure car spot and storage cage in the basement
- Close to all major amenities
- Council : \$333 p/q approx.
- Water: \$ 215 p/q approx.
- Strata: \$1150 approx
- Special levy for strata: \$155 p/q

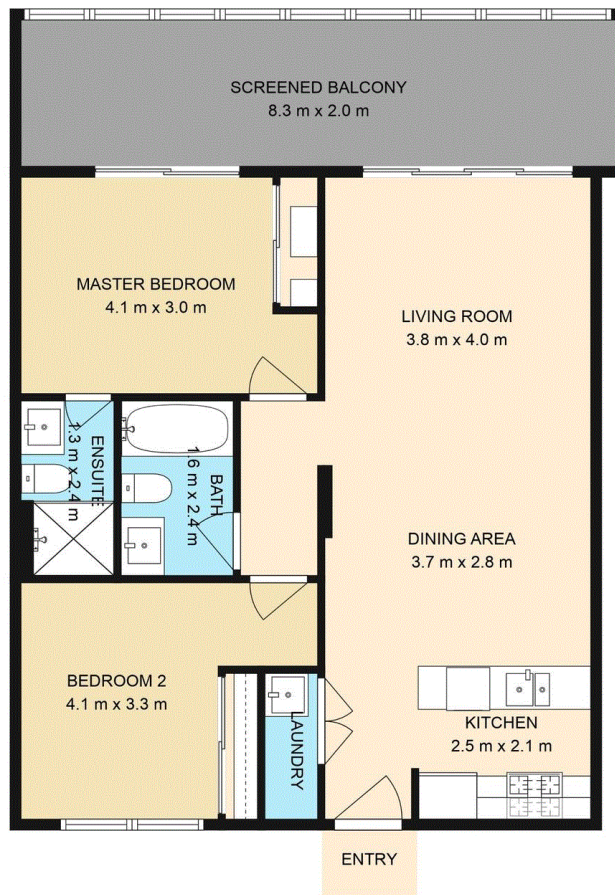
More About this Property

Property ID	Z8AGRH
Property Type	Apartment
Land Area	102 m²
Including	Toilets (2)

Ilce Dimeski 0424 198 337
Principal | ildimeski.casula@ljhooker.com.au

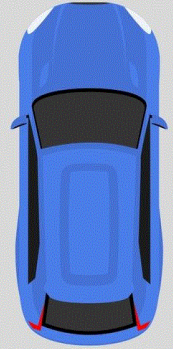
LJ Hooker Casula (02) 9601 8333
62 Marsh Parade, CASULA NSW 2170
casula.ljhooker.com.au | casula@ljhooker.com.au





STORAGE CAGE

SINGLE CARSPACE



102/387 Macquarie Street, Liverpool

Disclaimer : Floorplans are approximate. Actual may vary.



LJ Hooker Casula
(02) 9601 8333

Disclaimer: All information contained therein is gathered from relevant third parties sources.
We cannot guarantee or give any warranty about the information provided. Interested parties must rely solely on their own enquiries.