



## Lithgow, 10/57 Mort Street

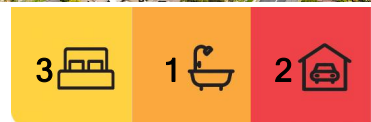
### Tri-Level Townhouse

This well presented townhouse makes the perfect easy care investment or lock and leave home.

The tri-level design features 3 bedrooms, a modern kitchen with gas stove, an open plan living room with gas heater, a modern bathroom, and a laundry with a handy second toilet.

There is a sunny North facing deck, a private courtyard, and internal access from the double garage with remote roller doors and storage room.

Currently leased at \$340 per week with vacant possession available if required.



**For Sale**  
\$345,000

**View**  
[ljhooker.com.au/1HATF9X](http://ljhooker.com.au/1HATF9X)

**Contact**  
**Blake Edgell**  
0434 579 426  
[bedgell@ljhlithgow.com.au](mailto:bedgell@ljhlithgow.com.au)  
**Jamie Giokaris**  
0418 201 028  
[jgiokaris@ljhlithgow.com.au](mailto:jgiokaris@ljhlithgow.com.au)



**LJ Hooker Lithgow**  
(02) 6351 2548

**Disclaimer:** All information contained therein is gathered from relevant third parties sources. We cannot guarantee or give any warranty about the information provided. Interested parties must rely solely on their own enquiries.

## More About this Property

<b>Property ID</b>	1HATF9X
<b>Property Type</b>	Unit

**Blake Edgell 0434 579 426**

Sales Agent | [bedgell@ljhlithgow.com.au](mailto:bedgell@ljhlithgow.com.au)

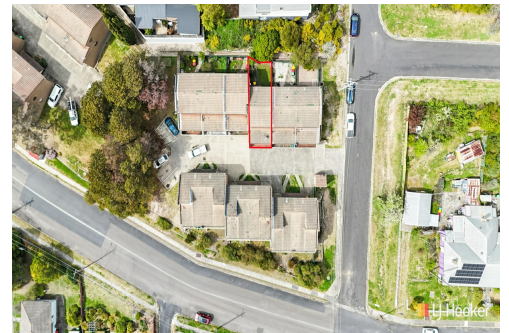
**Jamie Giokaris 0418 201 028**

Principal & Licensee | [jgiokaris@ljhlithgow.com.au](mailto:jgiokaris@ljhlithgow.com.au)

**LJ Hooker Lithgow (02) 6351 2548**

201 Main Street, LITHGOW NSW 2790

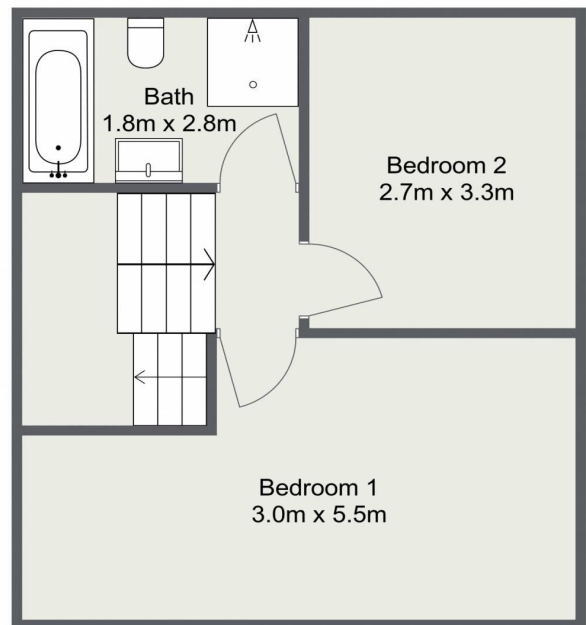
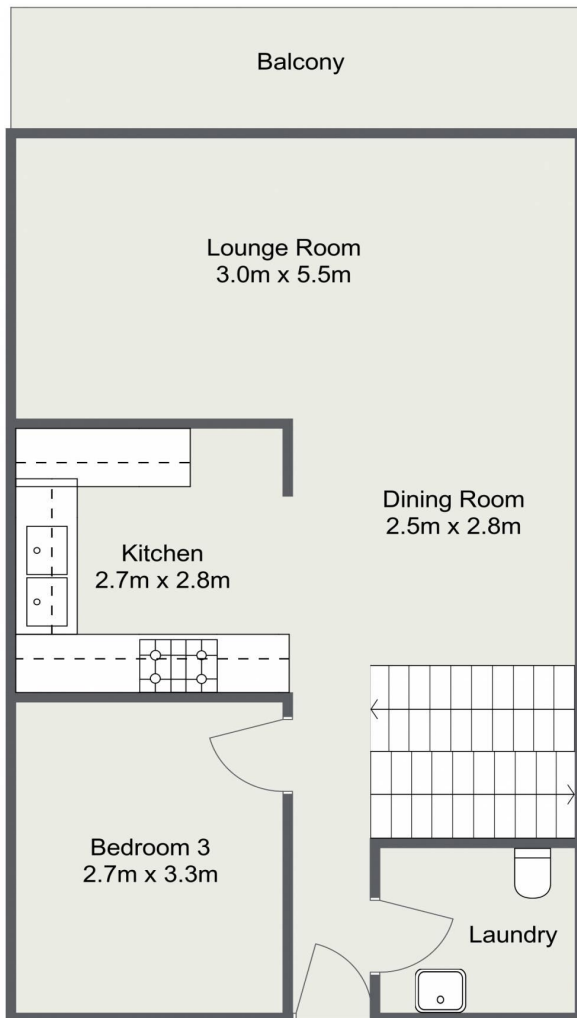
[lithgow.ljhooker.com.au](http://lithgow.ljhooker.com.au) | [enquiries@ljhlithgow.com.au](mailto:enquiries@ljhlithgow.com.au)



**LJ Hooker Lithgow  
(02) 6351 2548**

**Disclaimer:** All information contained therein is gathered from relevant third parties sources. We cannot guarantee or give any warranty about the information provided. Interested parties must rely solely on their own enquiries.

# 10/57 Mort Street, Lithgow



Please Note: The above dimensions are approximate and are intended to be used as a guide only. Interested parties are urged to rely on their own enquiries.