



80 Cupro Street, Lithgow




Stylish Art Deco Bungalow with Modern Finishes & Striking Street Appeal

Blending timeless Art Deco character with contemporary updates, this beautifully presented home makes an immediate impression with its bold facade and elegant architectural details. Behind its striking street presence lies a warm and inviting home designed for effortless modern living.

The home has attractive features including Spotted Gum timber floors, picture rails, ornate timber windows, and cast iron fireplaces. The floorplan offers 2 large bedrooms, a well-appointed kitchen with gas stove and feature copper vented range, formal lounge and dining rooms, and a modern bathroom/laundry.

Outdoors, the property continues to impress with a private, low maintenance garden framed by established trees, and rear lane access to a generous double garage and workshop.

Leased to a fabulous tenant at \$420 per week until September 2026, this is a wonderful opportunity to secure a character home in a highly desirable position in Extension Estate.

2  1  2 

FOR SALE
Please Call

AGENTS

Blake Edgell
0434 579 426
bedgell@ljlithgow.com.au

AGENCY

LJ Hooker Lithgow
(02) 6351 2548

All information contained therein is gathered from relevant third parties sources.
We cannot guarantee or give any warranty about the information provided.
Interested parties must rely solely on their own enquiries.



- Mt Victoria Pass is temporarily closed, however Lithgow is still accessible from Sydney and the Blue Mountains via the Darling Causeway diversion from the Great Western Highway and alternatively the Bells Line of Road.
Allow an extra 20 minutes travel time.

MORE DETAILS

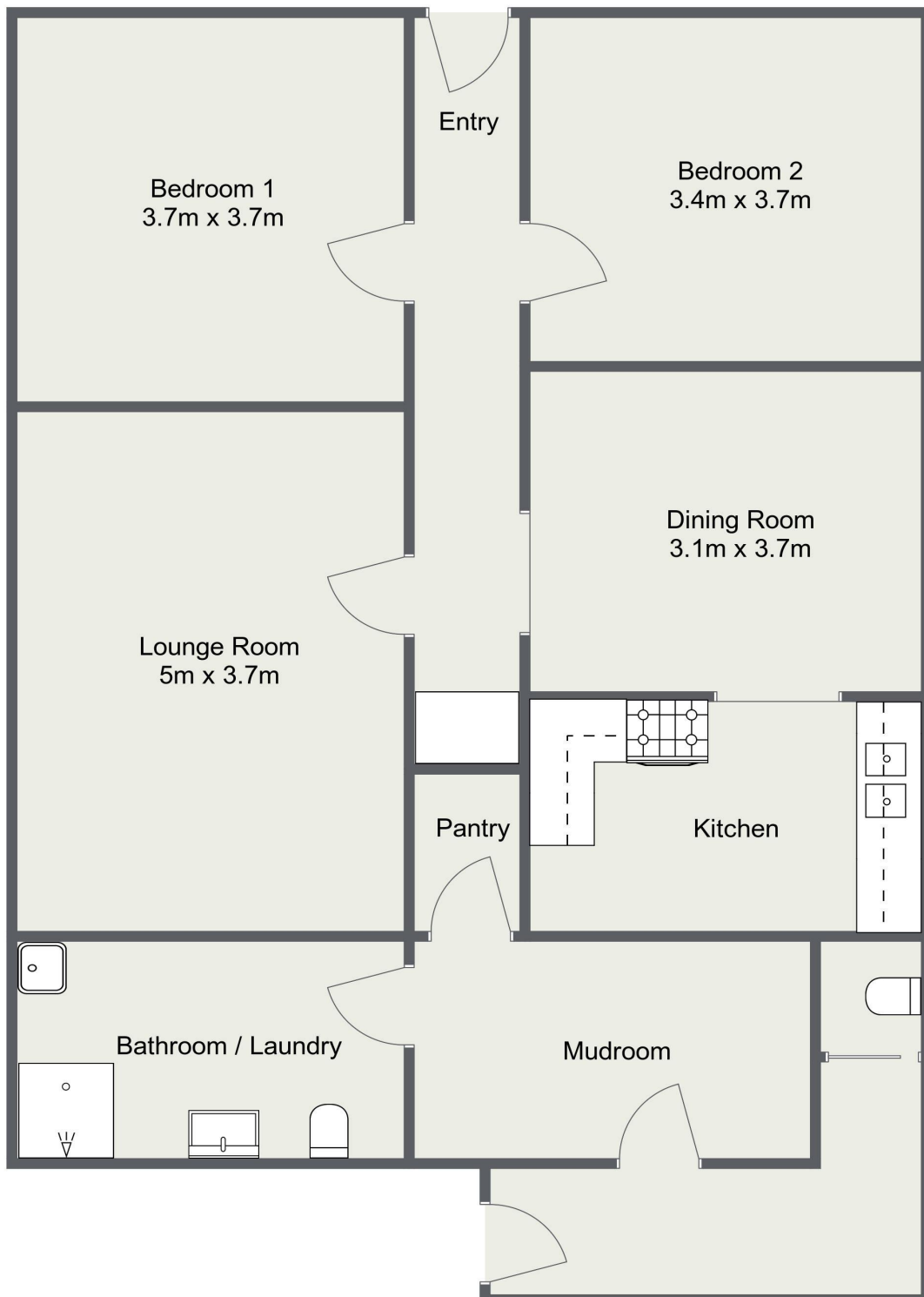
Property ID 1DY7F9X
Property Type House
House Size 109 m2
Land Area 486.9 m2

Blake Edgell 0434 579 426
Sales Agent | bedgell@ljhlithgow.com.au

LJ Hooker Lithgow (02) 6351 2548
201 Main Street, LITHGOW NSW 2790
lithgow.ljhooker.com.au | enquiries@ljhlithgow.com.au



80 Cupro Street, Lithgow



Please Note: The above dimensions are approximate and are intended to be used as a guide only.
Interested parties are urged to rely on their own enquiries.