



50 Malvern Street, Lithgow

"Rosehill" - An Early 1900's Masterpiece

Set on a sprawling quarter acre block alongside quality homes and adjacent to Coerwull School, "Rosehill" is a stunning piece of early 1900's architecture and has a commanding street presence.

Complete with ornate plaster ceilings, decorative timber architraves, and hand crafter exterior fretwork, the home has maintained many period features.

The expansive and versatile floor plan offers 3 grand bedrooms with 2 ensuites, a formal lounge room, a granite kitchen with stainless appliances and pantry, a open plan family room with plantation shutters, main bathroom with spa bath, and a spacious home office or gym.

There is a covered rear deck off the rear of the home, a 12m x 4m lock up workshop, and a paved portico.

All set amongst beautiful established gardens.

A rare opportunity in this tightly held and desirable location.

- Mt Victoria Pass is temporarily closed, however Lithgow is still accessible from Sydney and the Blue Mountains via the Darling

3 3 2

FOR SALE
\$875,000

VIEW
Sat 13th Jun @ 11:15AM - 11:45AM

AGENTS
Jamie Giokaris
0418 201 028
jgiokaris@ljlithgow.com.au

AGENCY
LJ Hooker Lithgow
(02) 6351 2548

All information contained therein is gathered from relevant third parties sources.
We cannot guarantee or give any warranty about the information provided.
Interested parties must rely solely on their own enquiries.

LJ Hooker

Causeway diversion from the Great Western Highway and alternatively the Bells Line of Road.
Allow an extra 20 minutes travel time.

MORE DETAILS

Property ID	1HVJF9X
Property Type	House
Land Area	1112 m2
Including	Study

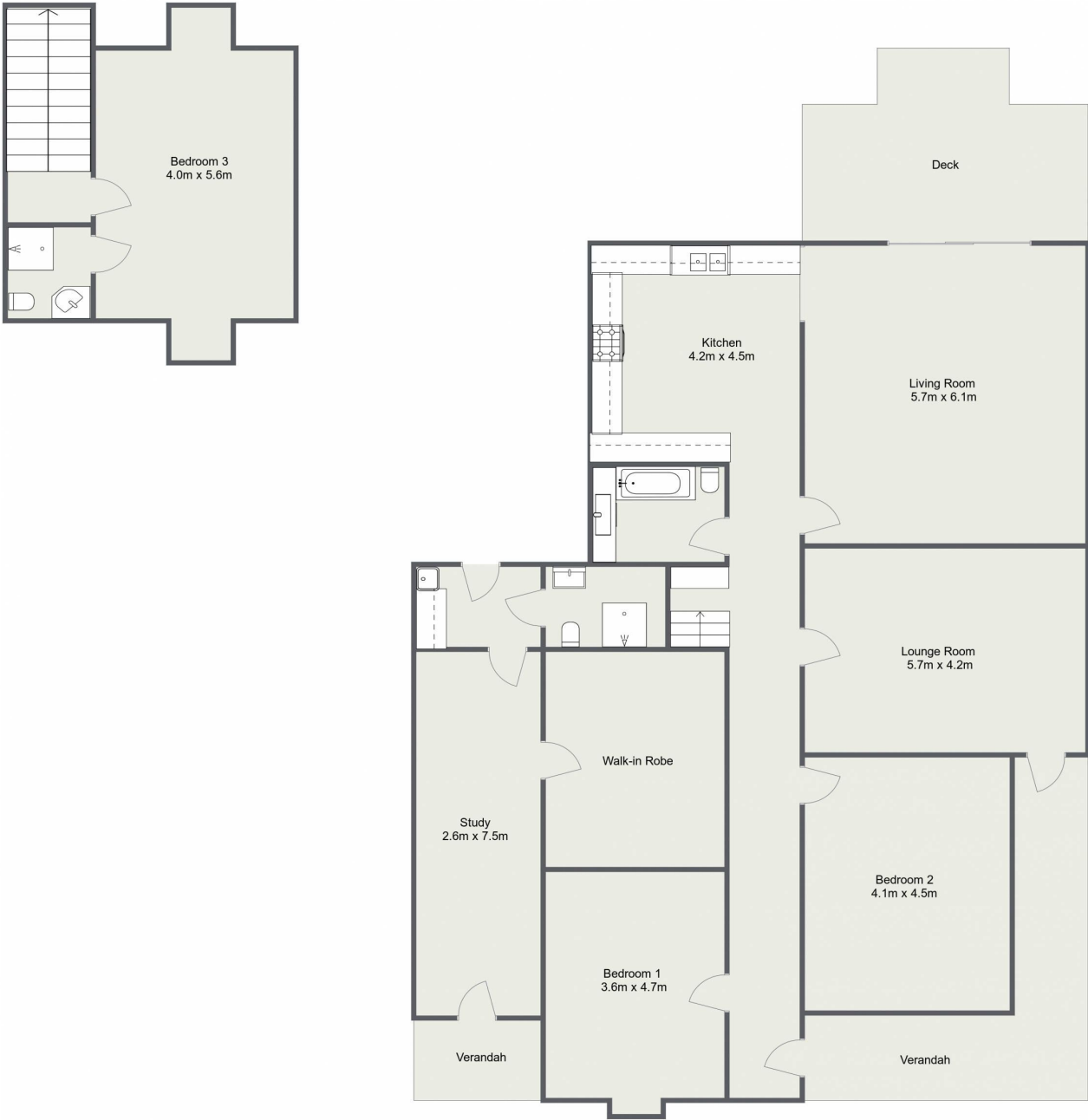
Jamie Giokaris 0418 201 028
Principal | jgiokaris@ljhlithgow.com.au

LJ Hooker Lithgow (02) 6351 2548
201 Main Street, LITHGOW NSW 2790
lithgow.ljhooker.com.au | enquiries@ljhlithgow.com.au



All information contained therein is gathered from relevant third parties sources.
We cannot guarantee or give any warranty about the information provided.
Interested parties must rely solely on their own enquiries.

50 Malvern Street, Lithgow



Please Note: The above dimensions are approximate and are intended to be used as a guide only. Interested parties are urged to rely on their own enquiries.