



Lithgow, 44 Clarice Street

UNIQUE WESTERN RED CEDAR HOME

A great central position, 400 metres to Main Street and a unique Mountain timber design with polished floorboards and plenty of natural light.

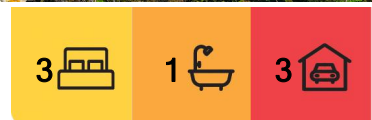
The home has had a recent renovation and consists of the following:

A good sized main bedroom with walk in robe, near new bathroom with claw leg bath; Caesarstone kitchen with gas cooking, large pantry & dining space, lounge room with split system air conditioner and new laundry with 2nd separate toilet.

Upstairs there is a walk in linen press and 2 spacious bedrooms (one with study, dressing area or toy room).

The rear yard is fenced with access to a single lock up garage and garden shed. There is also an attached double length carport and covered front verandah.

The home backs onto open space out the back and has a pleasant mountain outlook.



For Sale
\$610,000

View
ljhooker.com.au/1HD9F9X

Contact
Jamie Giokaris
0418 201 028
jgiokaris@ljhlithgow.com.au
Jamie Giokaris
0418 201 028
jgiokaris@ljhlithgow.com.au



Disclaimer: All information contained therein is gathered from relevant third parties sources. We cannot guarantee or give any warranty about the information provided. Interested parties must rely solely on their own enquiries.

LJ Hooker Lithgow
(02) 6351 2548

More About this Property

Property ID	1HD9F9X
Property Type	House
House Size	148 m ²
Land Area	627 m ²

Jamie Giokaris 0418 201 028

Principal & Licensee | jgiokaris@ljhlithgow.com.au

Jamie Giokaris 0418 201 028

Principal & Licensee | jgiokaris@ljhlithgow.com.au

LJ Hooker Lithgow (02) 6351 2548

201 Main Street, LITHGOW NSW 2790

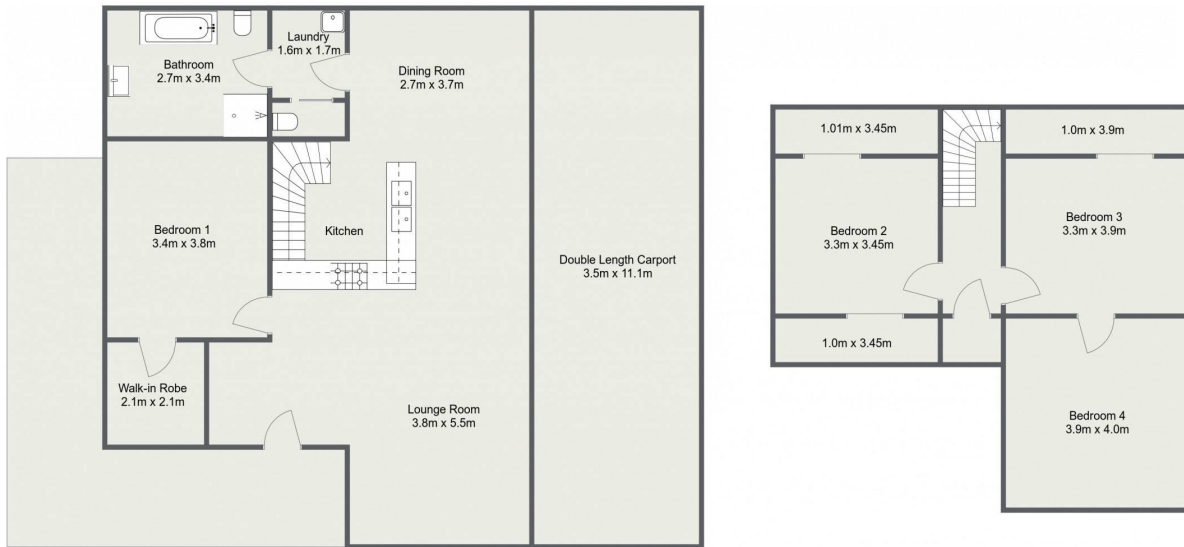
lithgow.ljhooker.com.au | enquiries@ljhlithgow.com.au



LJ Hooker Lithgow
(02) 6351 2548

Disclaimer: All information contained therein is gathered from relevant third parties sources.
We cannot guarantee or give any warranty about the information provided. Interested parties must rely solely on their own enquiries.

44 Clarice Street, Lithgow



Please Note: The above dimensions are approximate and are intended to be used as a guide only. Interested parties are urged to rely on their own enquiries.