

30 Cupro Street, Lithgow

## Popular Extension Estate

A beautifully presented full brick residence with a tasteful, modern interior, built-in wardrobes in both of the spacious bedrooms, an open plan loungeroom with flow-through to a modern eat-in kitchen and a separate modern bathroom and laundry.

The home is kept comfortably by ducted natural gas central heating. The versatile family room at the rear of the home features high ceilings, double glazed windows and has potential for use as a 3rd bedroom or home office.




A small covered rear deck and a timber sun deck provide great outside spaces.

A single garage has access from the rear laneway.

An all round "move in ready" immaculate residence.

- Mt Victoria Pass is temporarily closed, however Lithgow is still accessible from Sydney and the Blue Mountains via the Darling Causeway diversion from the Great Western Highway and alternatively the Bells Line of Road.

Allow an extra 20 minutes travel time.

2  1  1 

**FOR SALE**  
\$569,000

**VIEW**  
By Appointment

**AGENTS**  
Blake Edgell  
0434 579 426  
bedgell@ljlithgow.com.au

**AGENCY**  
LJ Hooker Lithgow  
(02) 6351 2548

All information contained therein is gathered from relevant third parties sources.  
We cannot guarantee or give any warranty about the information provided.  
Interested parties must rely solely on their own enquiries.

 **LJ Hooker**

## MORE DETAILS

Property ID 1JGWF9X  
Property Type House  
House Size 97.3 m2  
Land Area 316 m2

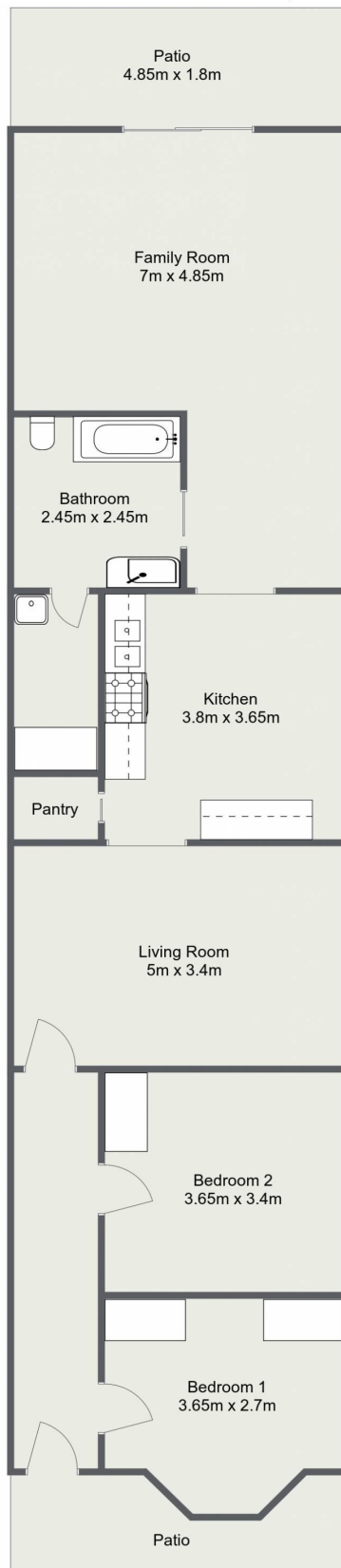
**Blake Edgell 0434 579 426**  
Sales Agent | [bedgell@ljhlithgow.com.au](mailto:bedgell@ljhlithgow.com.au)

**LJ Hooker Lithgow (02) 6351 2548**  
201 Main Street, LITHGOW NSW 2790  
[lithgow.ljhooker.com.au](http://lithgow.ljhooker.com.au) | [enquiries@ljhlithgow.com.au](mailto:enquiries@ljhlithgow.com.au)



All information contained therein is gathered from relevant third parties sources.  
We cannot guarantee or give any warranty about the information provided.  
Interested parties must rely solely on their own enquiries.

# 30 Cupro Street, Lithgow



Please Note: The above dimensions are approximate and are intended to be used as a guide only. Interested parties are urged to rely on their own enquiries.