



## Lithgow, 29 Bridge Street

### Attractive Double Brick - Central Location

Conveniently positioned in the heart of town opposite Lithgow Public School, this 1920's full brick home has original features throughout and is packed with potential.

The home offers 3 large bedrooms, a neat kitchen with gas cook top, under bench oven, and corner pantry; a formal lounge room with gas heater; a formal dining room with gas heater, a neat bathroom, and a rear sunroom.

An easy care and level block with 2 garden sheds and a water tank completes the picture.

Prime location in a great neighbourhood. Close to a medical centre, high school, child care centre and Eastern end of Main Street.

3

1

0

**For Sale**  
\$495,000

**View**  
[ljhooker.com.au/1H2VF9X](http://ljhooker.com.au/1H2VF9X)

**Contact**  
**Jamie Giokaris**  
0418 201 028  
[jgiokaris@ljhlithgow.com.au](mailto:jgiokaris@ljhlithgow.com.au)



**Disclaimer:** All information contained therein is gathered from relevant third parties sources. We cannot guarantee or give any warranty about the information provided. Interested parties must rely solely on their own enquiries.

**LJ Hooker Lithgow**  
(02) 6351 2548



## More About this Property

Property ID	1H2VF9X
Property Type	House
House Size	95 m <sup>2</sup>
Land Area	404 m <sup>2</sup>

**Jamie Giokaris 0418 201 028**

Principal & Licensee | [jgiokaris@ljhlithgow.com.au](mailto:jgiokaris@ljhlithgow.com.au)

**LJ Hooker Lithgow (02) 6351 2548**

201 Main Street, LITHGOW NSW 2790

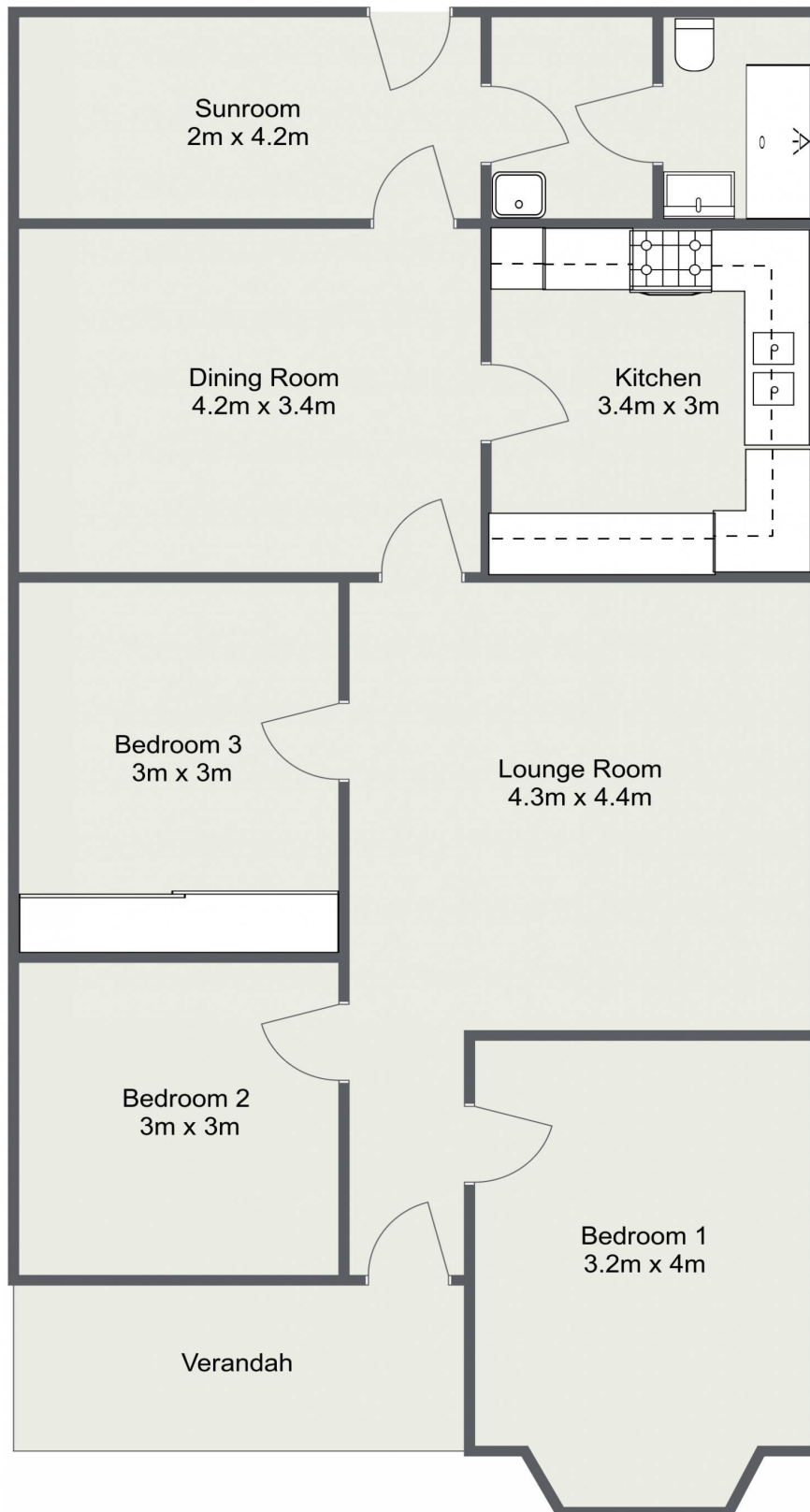
[lithgow.ljhooker.com.au](http://lithgow.ljhooker.com.au) | [enquiries@ljhlithgow.com.au](mailto:enquiries@ljhlithgow.com.au)



**Disclaimer:** All information contained therein is gathered from relevant third parties sources. We cannot guarantee or give any warranty about the information provided. Interested parties must rely solely on their own enquiries.

**LJ Hooker Lithgow**  
**(02) 6351 2548**

# 29 Bridge Street, Lithgow



Please Note: The above dimensions are approximate and are intended to be used as a guide only. Interested parties are urged to rely on their own enquiries.