



17a Silcock Street, Lithgow

## Sleek, Modern & Central

Well positioned in the Pottery Estate within 250 metres of St Patricks School and the Valley Plaza, this modern brick veneer is perfect for a young family.


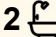

The conventional floorplan offers 3 bedrooms with built-in robes including a master with walk-in robe and ensuite, a modern kitchen with dishwasher, gas cook top, and island bench, a modern main bathroom with free standing bath, and an open plan living and dining room.

The home is climate controlled with ducted reverse cycle air conditioning, and there is a 5000 litre water tank for the gardens.

There is excellent outdoor living space with a covered front porch and a large covered rear deck, and there is rear lane access to a single garage.

All set on an easy care and fully fenced 436 square metre block.

Currently leased until May 2026 at \$500 per week.

3  2  1 

**FOR SALE**  
\$675,000

### AGENTS

Jamie Giokaris  
0418 201 028  
jgiokaris@ljlithgow.com.au

### AGENCY

LJ Hooker Lithgow  
(02) 6351 2548

All information contained therein is gathered from relevant third parties sources.  
We cannot guarantee or give any warranty about the information provided.  
Interested parties must rely solely on their own enquiries.

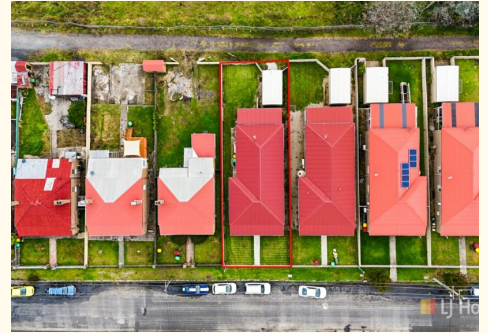
 **LJ Hooker**

## MORE DETAILS

Property ID 1JHTF9X  
Property Type House  
House Size 140 m2  
Land Area 436 m2

**Jamie Giokaris 0418 201 028**  
Principal | [jgiokaris@ljhlithgow.com.au](mailto:jgiokaris@ljhlithgow.com.au)

**LJ Hooker Lithgow (02) 6351 2548**  
201 Main Street, LITHGOW NSW 2790  
[lithgow.ljhooker.com.au](http://lithgow.ljhooker.com.au) | [enquiries@ljhlithgow.com.au](mailto:enquiries@ljhlithgow.com.au)



All information contained therein is gathered from relevant third parties sources.  
We cannot guarantee or give any warranty about the information provided.  
Interested parties must rely solely on their own enquiries.

# 17a Silcock Street, Lithgow



Please Note: The above dimensions are approximate and are intended to be used as a guide only.  
Interested parties are urged to rely on their own enquiries.