



16 Laidley Street, Lithgow

## A Beautiful Double Brick Home & Gardens

Set on a large and level 830 square metre block in leafy Morts Estate, this beautiful full brick home has an attractive look from the street, generous living space throughout, and will suit a growing family.

The home offers 3 large bedrooms and a study, 2 living areas, a quality timber kitchen, along with a neat bathroom and laundry.


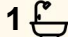

There is a large covered entertainment area off the back of the home and a covered front porch that both enjoy morning and afternoon sun, along with a single carport and a single garage.

A real feature is a established lawns and gardens, with mature trees along the North Eastern boundary.

A well loved family home, ready for a new owner.

- Mt Victoria Pass is temporarily closed, however Lithgow is still accessible from Sydney and the Blue Mountains via the Darling Causeway diversion from the Great Western Highway and alternatively the Bells Line of Road.

Allow an extra 20 minutes travel time.

3  1  2 

**FOR SALE**  
\$599,000

**VIEW**

Sat 23rd May @ 11:00AM - 11:20AM

**AGENTS**

Jamie Giokaris  
0418 201 028  
jgiokaris@ljlithgow.com.au

**AGENCY**

LJ Hooker Lithgow  
(02) 6351 2548

All information contained therein is gathered from relevant third parties sources.  
We cannot guarantee or give any warranty about the information provided.  
Interested parties must rely solely on their own enquiries.

 **LJ Hooker**

## MORE DETAILS

Property ID 146FF9X  
Property Type House  
House Size 146 m2  
Land Area 830 m2

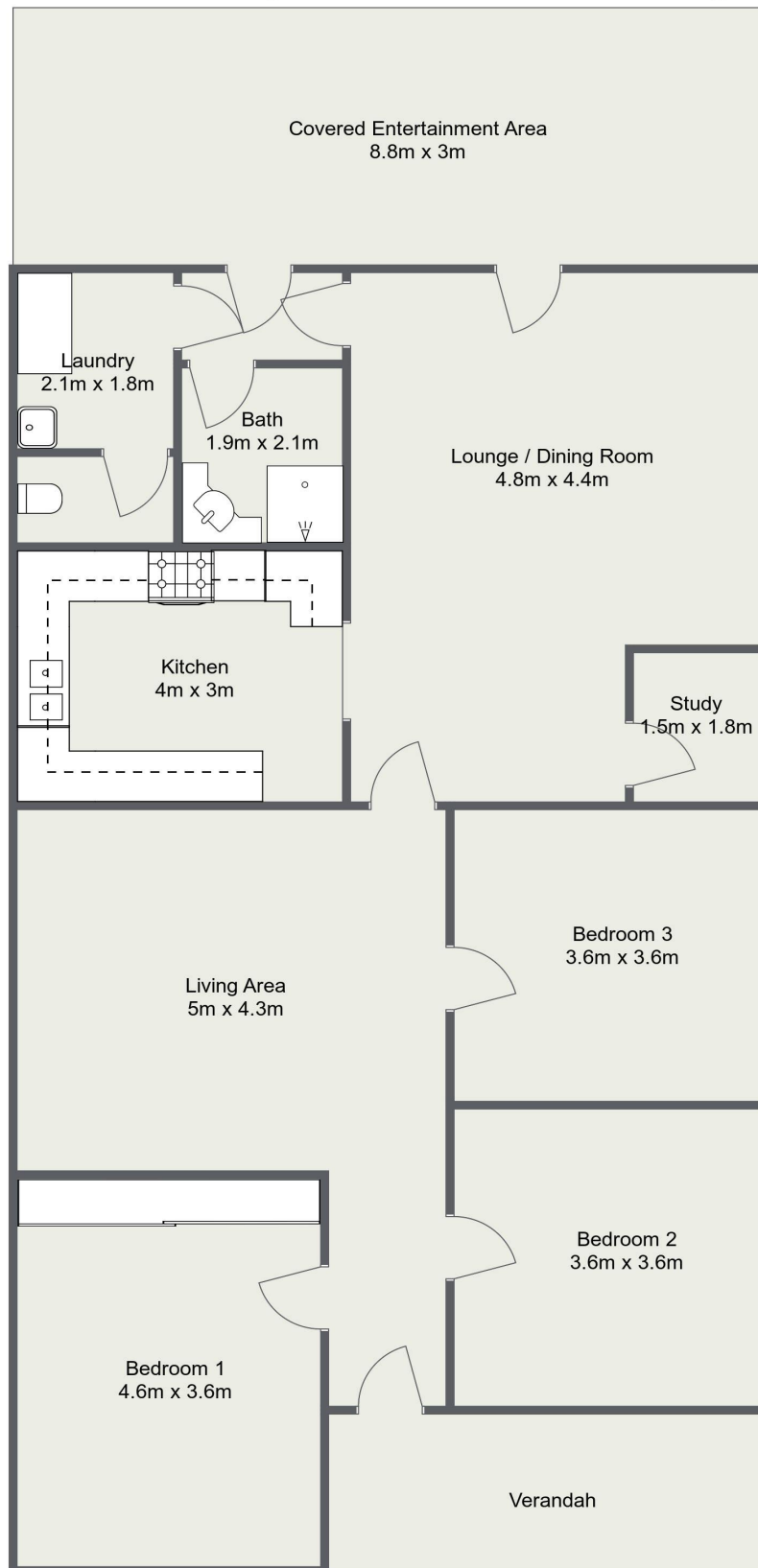
**Jamie Giokaris 0418 201 028**  
Principal | [jgiokaris@ljhlithgow.com.au](mailto:jgiokaris@ljhlithgow.com.au)

**LJ Hooker Lithgow (02) 6351 2548**  
201 Main Street, LITHGOW NSW 2790  
[lithgow.ljhooker.com.au](http://lithgow.ljhooker.com.au) | [enquiries@ljhlithgow.com.au](mailto:enquiries@ljhlithgow.com.au)



All information contained therein is gathered from relevant third parties sources.  
We cannot guarantee or give any warranty about the information provided.  
Interested parties must rely solely on their own enquiries.

# 16 Laidley Street, Lithgow



Please Note: The above dimensions are approximate and are intended to be used as a guide only. Interested parties are urged to rely on their own enquiries.