



152 Hassans Walls Road, Lithgow

"Killara" - Timeless Character & Quality


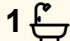
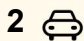
Boasting a prime location in Extension Estate, opposite magnificent Queen Elizabeth Park, this beautiful full brick home has been lovingly cared for by the same family for more than 70 years.

The home enjoys a blend of original period features including polished timber floors and high pressed metal ceilings, along with a practical modern extension giving excellent additional living space.

There are 3 large bedrooms, a Tasmanian Oak kitchen with granite benchtops, a stylish bathroom with sunken spa bath and Velux skylight, a formal lounge room with natural gas heater and a large family room with built-in bar. Natural gas central heating along with split system air conditioning keep the home comfortable year round.

The established yard has mature trees and garden beds, along with a paved terrace with built-in BBQ, and there is a drive through double garage and workshop accessed via the rear laneway.

A wonderful family home in a desirable and tightly held location.

3  1  2 

FOR SALE
\$775,000

VIEW
Sat 9th May @ 12:00PM - 12:30PM

AGENTS
Jamie Giokaris
0418 201 028
jgiokaris@ljlhithgow.com.au

AGENCY
LJ Hooker Lithgow
(02) 6351 2548

All information contained therein is gathered from relevant third parties sources.
We cannot guarantee or give any warranty about the information provided.
Interested parties must rely solely on their own enquiries.

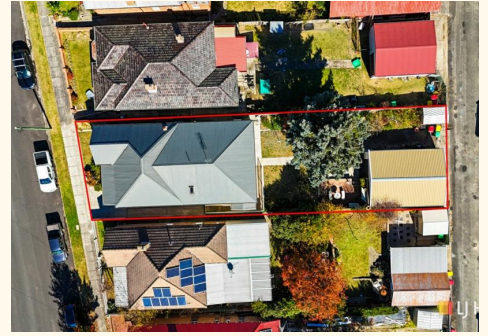
 **LJ Hooker**

MORE DETAILS

Property ID 1JP9F9X
Property Type House
House Size 165 m2
Land Area 550 m2

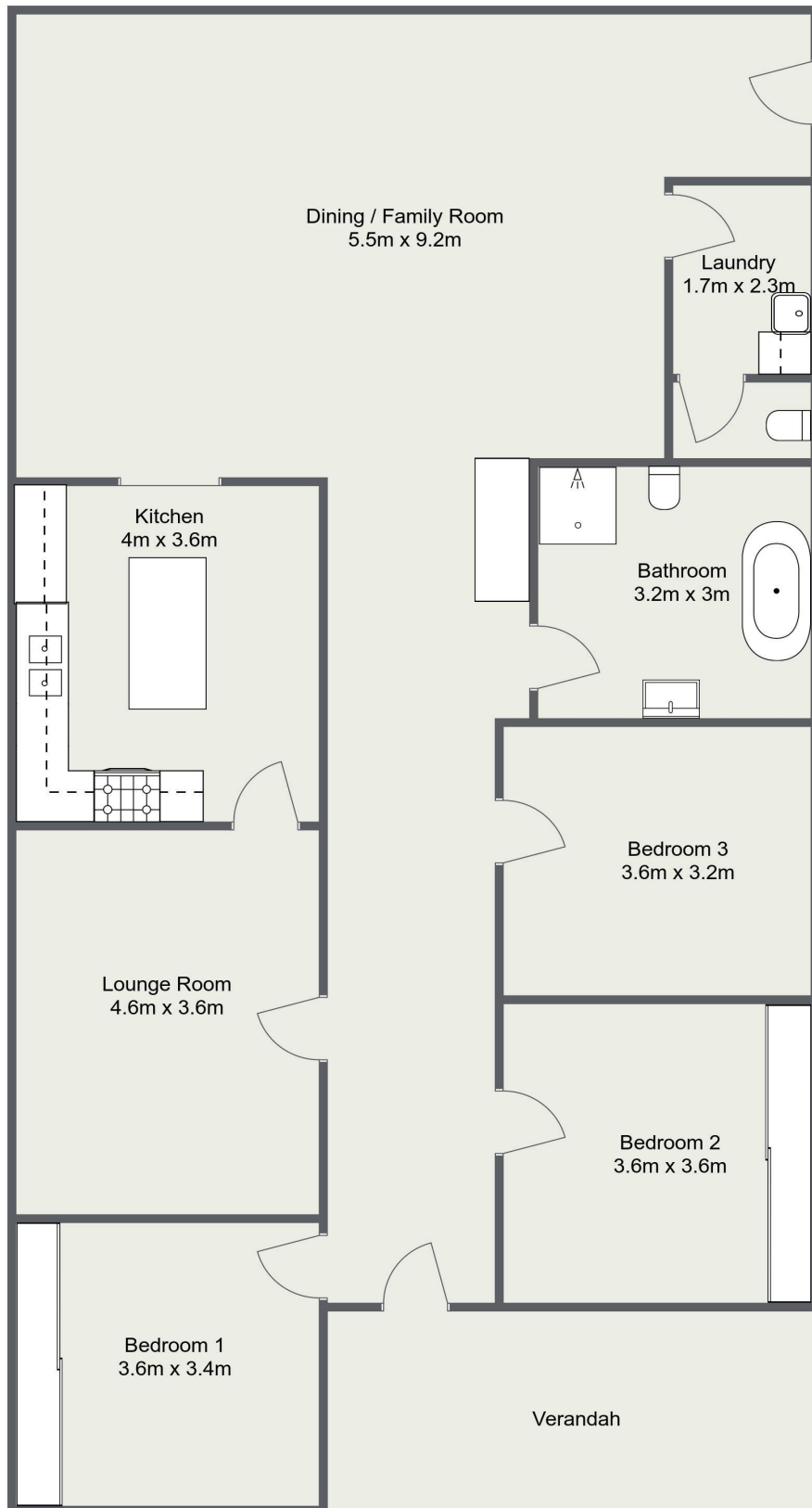
Jamie Giokaris 0418 201 028
Principal | jgiokaris@ljhlithgow.com.au

LJ Hooker Lithgow (02) 6351 2548
201 Main Street, LITHGOW NSW 2790
lithgow.ljhooker.com.au | enquiries@ljhlithgow.com.au



All information contained therein is gathered from relevant third parties sources.
We cannot guarantee or give any warranty about the information provided.
Interested parties must rely solely on their own enquiries.

152 Hassans Walls Road, Lithgow



Please Note: The above dimensions are approximate and are intended to be used as a guide only.
Interested parties are urged to rely on their own enquiries.