



144 Hassans Walls Road, Lithgow

"Beholm" - Circa 1912

A landmark Victorian residence, "Beholm" is a grand double storey residence of rare significance, proudly positioned in the very heart of Lithgow and overlooking the open green expanse of Queen Elizabeth Park.

Completed Circa 1912, the home is recognised as the first and largest house built in the original Coerwull Estate extension, establishing it as a defining landmark within the streetscape.

The home's commanding brick facade, patterned slate roof with terracotta ridging and finials, and elegant two storey verandah with original cast iron lacework, immediately reflect the stature and craftsmanship of its era. A brick and wrought iron boundary fence further enhances its strong street presence and heritage appeal.

Beyond its architectural importance, "Beholm" offers a lifestyle that is increasingly hard to find. The property enjoys a central "walk everywhere" location, a convenient distance from shops, Queen Elizabeth Park, sporting fields and Lithgow swimming centre.

Established gardens provide a private and tranquil setting, complete with a BBQ and outdoor entertaining area, a hot house for year round gardening, and generous outdoor spaces ideal for family gatherings or

4 2 4

FOR SALE
Auction

AGENTS

Jamie Giokaris
0418 201 028
jgiokaris@ljhlithgow.com.au

Blake Edgell
0434 579 426
bedgell@ljhlithgow.com.au

AGENCY

LJ Hooker Lithgow
(02) 6351 2548

All information contained therein is gathered from relevant third parties sources.
We cannot guarantee or give any warranty about the information provided.
Interested parties must rely solely on their own enquiries.

LJ Hooker

quiet retreat. A substantial four car garage with a workshop offers exceptional storage and vehicle accommodation, a rare and highly practical feature for a home of this period.

Historically built as one of Lithgow's first executive homes, it has been held by only three owners since construction, with the current family proudly caring for "Becholm" since 1978. This long custodianship is a testament to the home's warmth, liveability and enduring quality.

"Becholm" represents a unique opportunity to secure a significant yet highly liveable Victorian home, where heritage, lifestyle and location combine in perfect balance.

- Mt Victoria Pass is temporarily closed, however Lithgow is still accessible from Sydney and the Blue Mountains via the Darling Causeway diversion from the Great Western Highway and alternatively the Bells Line of Road. Allow an extra 20 minutes travel time.

MORE DETAILS

Property ID	1JG7F9X
Property Type	House
House Size	150 m2
Land Area	632.3 m2

Jamie Giokaris 0418 201 028

Principal | jgiokaris@ljhlithgow.com.au

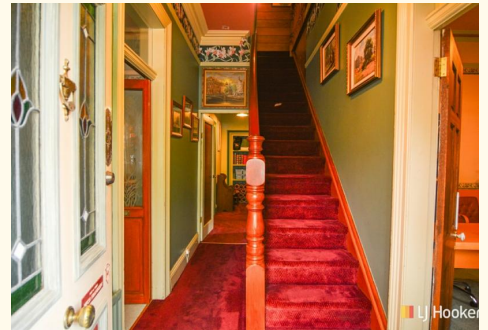
Blake Edgell 0434 579 426

Sales Agent | bedgell@ljhlithgow.com.au

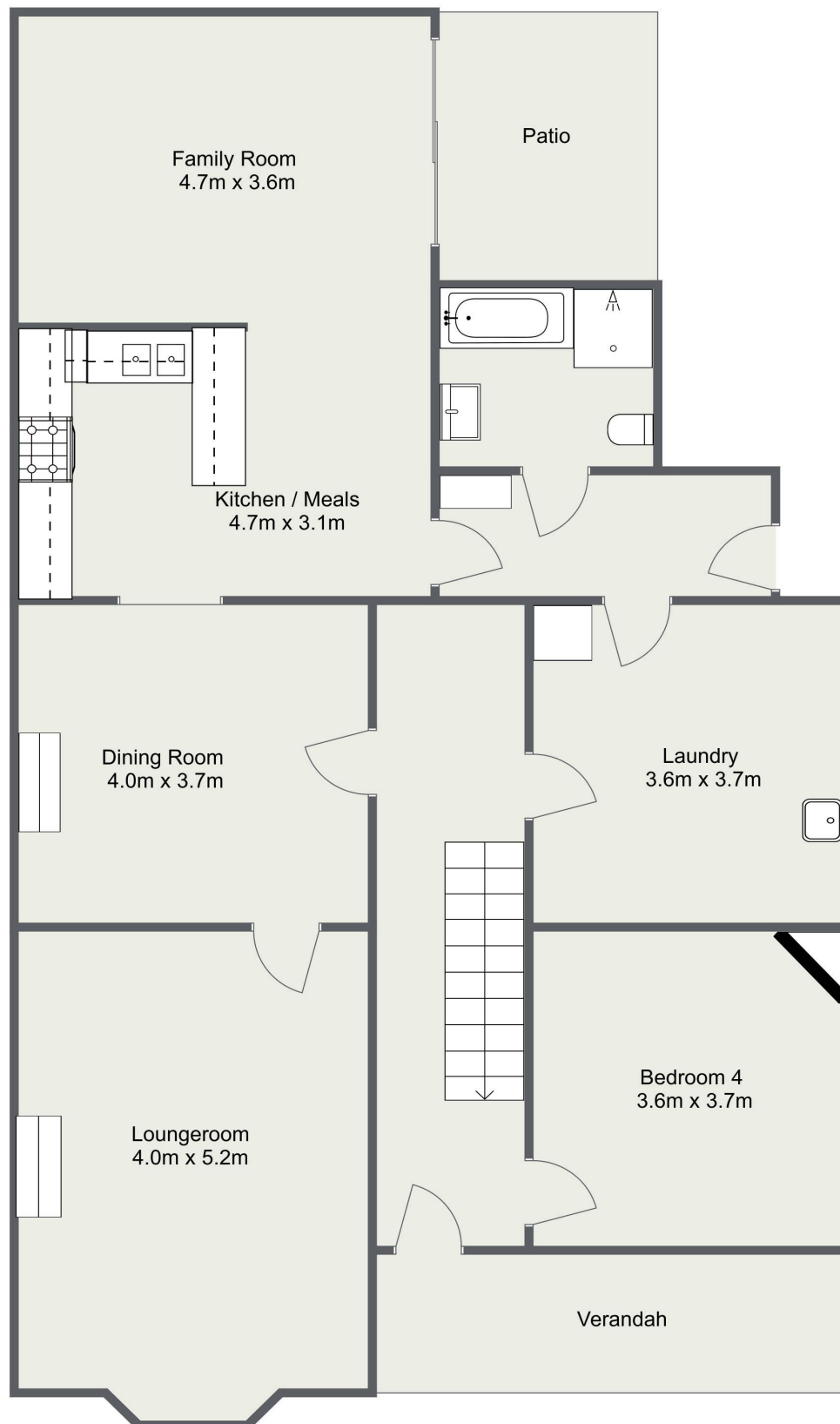
LJ Hooker Lithgow (02) 6351 2548

201 Main Street, LITHGOW NSW 2790

lithgow.ljhooker.com.au | enquiries@ljhlithgow.com.au



144 Hassans Walls Road, Lithgow



Please Note: The above dimensions are approximate and are intended to be used as a guide only.
Interested parties are urged to rely on their own enquiries.