



11 Curtin Place, Lithgow

## Dress Circle Location

The popular and tightly held circle of Curtin Place is just one of the reasons to check out this beautiful two storey family residence. It's all about opportunity, with plenty of potential to renovate to your own taste and then sit back and enjoy living in a friendly family neighbourhood.

The ground floor features formal lounge and dining rooms, separate study, open plan kitchen and meals area, laundry and second bathroom. Upstairs consists of main bedroom with walk in robe and ensuite, 3 other bedrooms (all with built-in wardrobes) and main bathroom with separate toilet.

There is front access to a double attached garage and sliding door access to a covered entertainment area and level, easy care and established grounds and gardens.

The home backs onto a grassed public green space —perfect for a young family to use as a play space.

Don't miss a rare opportunity to secure a home in this sought after location.

4 2 2

### FOR SALE

Please Call

### AGENTS

Jamie Giokaris  
0418 201 028  
jgiokaris@ljlithgow.com.au

### AGENCY

LJ Hooker Lithgow  
(02) 6351 2548

All information contained therein is gathered from relevant third parties sources.  
We cannot guarantee or give any warranty about the information provided.  
Interested parties must rely solely on their own enquiries.

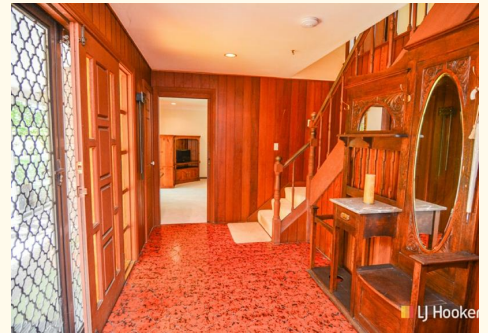


## MORE DETAILS

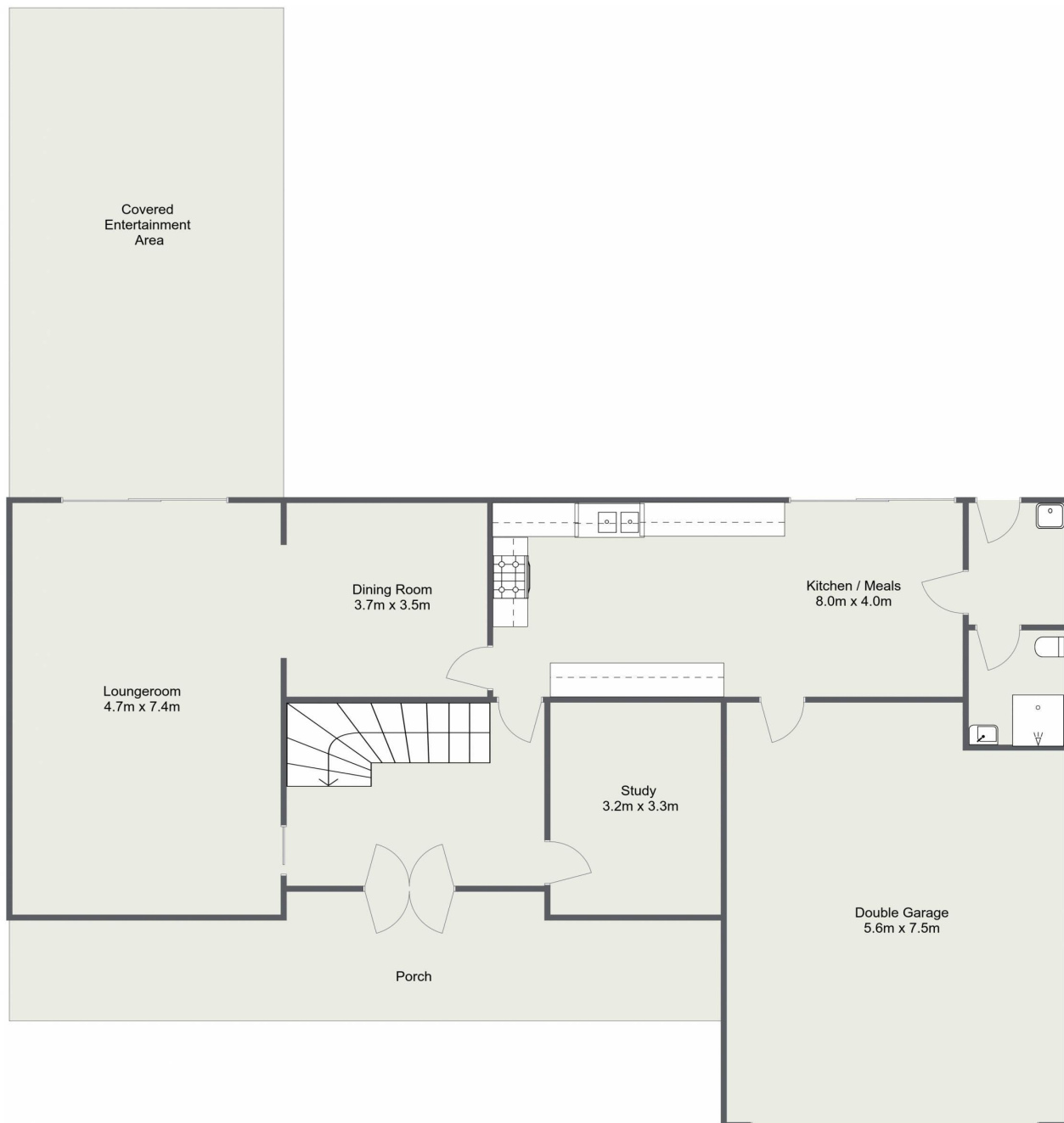
Property ID	SMWF9X
Property Type	House
House Size	165 m2
Land Area	1010 m2
Including	Ensuite
	Study
	Built-in-Robes
	Heating

**Jamie Giokaris 0418 201 028**  
Principal | [jgiokaris@ljhlithgow.com.au](mailto:jgiokaris@ljhlithgow.com.au)

**LJ Hooker Lithgow (02) 6351 2548**  
201 Main Street, LITHGOW NSW 2790  
[lithgow.ljhooker.com.au](mailto:lithgow.ljhooker.com.au) | [enquiries@ljhlithgow.com.au](mailto:enquiries@ljhlithgow.com.au)



# 11 Curtin Place, Lithgow



Please Note: The above dimensions are approximate and are intended to be used as a guide only.  
Interested parties are urged to rely on their own enquiries.