



Lithgow, 11 Acacia Close

Strathlone Family Executive

An immaculately presented family home with new exterior and interior paintwork and a high side corner position with an outstanding outlook over South Bowenfels.

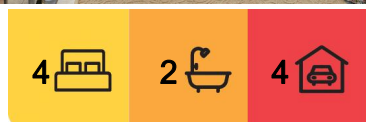
The conventional floorplan offers 4 bedrooms (main with ensuite & walk in robe); formal living and dining room with log fire; open plan meals, family room and Jarrah timber kitchen. There are plenty of extra features with a good sized study, fully enclosed sunroom/entertaining area, natural gas central heating, security system and garden irrigation.

The attached garage accommodates 4 cars and the award winning fully landscaped garden block is one of the best in the district.

A great opportunity to purchase a fully established executive residence in the popular and proven Strathlone Estate.



Disclaimer: All information contained therein is gathered from relevant third parties sources. We cannot guarantee or give any warranty about the information provided. Interested parties must rely solely on their own enquiries.



For Sale
\$795,000

View
ljhooker.com.au/1HD1F9X

Contact
Jamie Giokaris
0418 201 028
jgiokaris@ljhlithgow.com.au
Jamie Giokaris
0418 201 028
jgiokaris@ljhlithgow.com.au

LJ Hooker Lithgow
(02) 6351 2548

More About this Property

Property ID	1HD1F9X
Property Type	House
House Size	234 m ²
Land Area	959 m ²
Including	Study

Jamie Giokaris 0418 201 028

Principal & Licensee | jgiokaris@ljhlithgow.com.au

Jamie Giokaris 0418 201 028

Principal & Licensee | jgiokaris@ljhlithgow.com.au

LJ Hooker Lithgow (02) 6351 2548

201 Main Street, LITHGOW NSW 2790

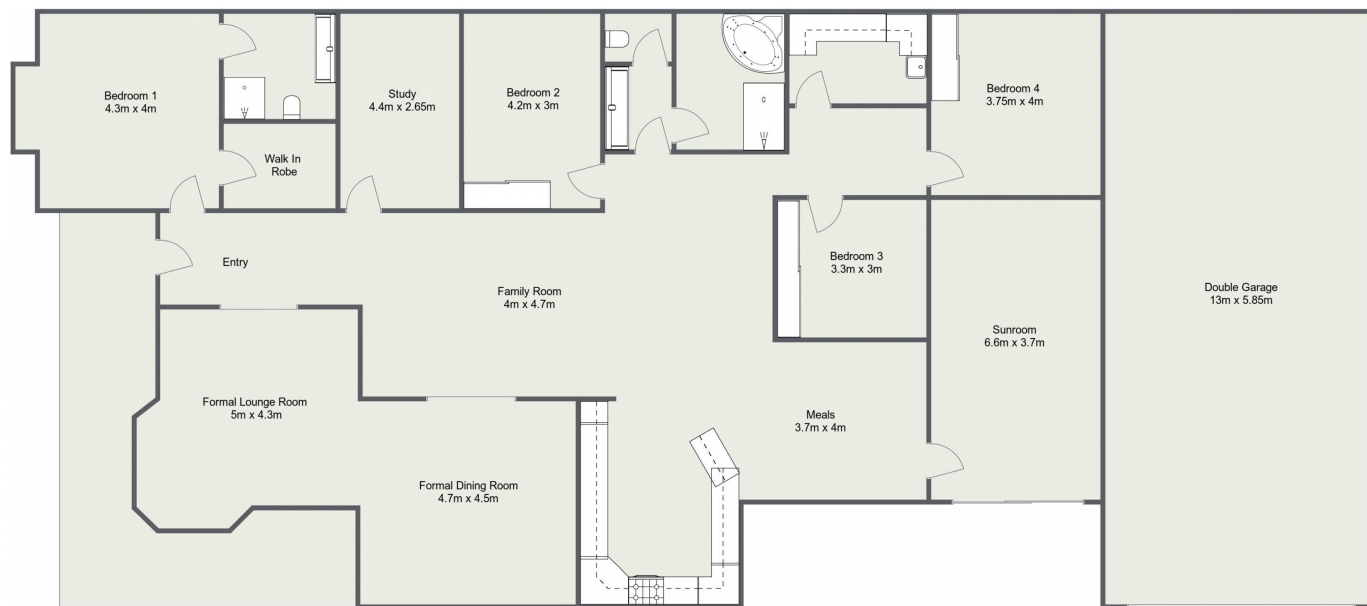
lithgow.ljhooker.com.au | enquiries@ljhlithgow.com.au



Disclaimer: All information contained therein is gathered from relevant third parties sources.
We cannot guarantee or give any warranty about the information provided. Interested parties must rely solely on their own enquiries.

LJ Hooker Lithgow
(02) 6351 2548

11 Acacia Close, Lithgow



Please Note: The above dimensions are approximate and are intended to be used as a guide only.
Interested parties are urged to rely on their own enquiries.