



6 Whitton Street, Lithgow

Well Kept Railway Semi

Held in the same family for many years, and one of only a handful of these unique pre-cast concrete semi detached homes, this is a great opportunity to secure a slice of Lithgow's history.



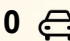
The home is in original condition with original timber floors and high ceilings throughout. There a 3 large bedrooms, a basic eat-in kitchen, a lounge room with gas heater, a neat bathroom, and a sunroom.

The corner block is a generous 697 square metres and offers side street access with ample room for a garage if desired.

A solid structure with excellent renovation potential.

- Mt Victoria Pass is temporarily closed, however Lithgow is still accessible from Sydney and the Blue Mountains via the Darling Causeway diversion from the Great Western Highway and alternatively the Bells Line of Road.

Allow an extra 20 minutes travel time.

3  1  0 

FOR SALE

\$550,000

VIEW

Sat 13th Jun @ 10:45AM - 11:15AM

AGENTS

Jamie Giokaris
0418 201 028
jgiokaris@ljlithgow.com.au

AGENCY

LJ Hooker Lithgow
(02) 6351 2548

All information contained therein is gathered from relevant third parties sources.
We cannot guarantee or give any warranty about the information provided.
Interested parties must rely solely on their own enquiries.

 **LJ Hooker**

MORE DETAILS

Property ID 1JK4F9X
Property Type DuplexSemi-detached
House Size 110 m2
Land Area 697.3 m2

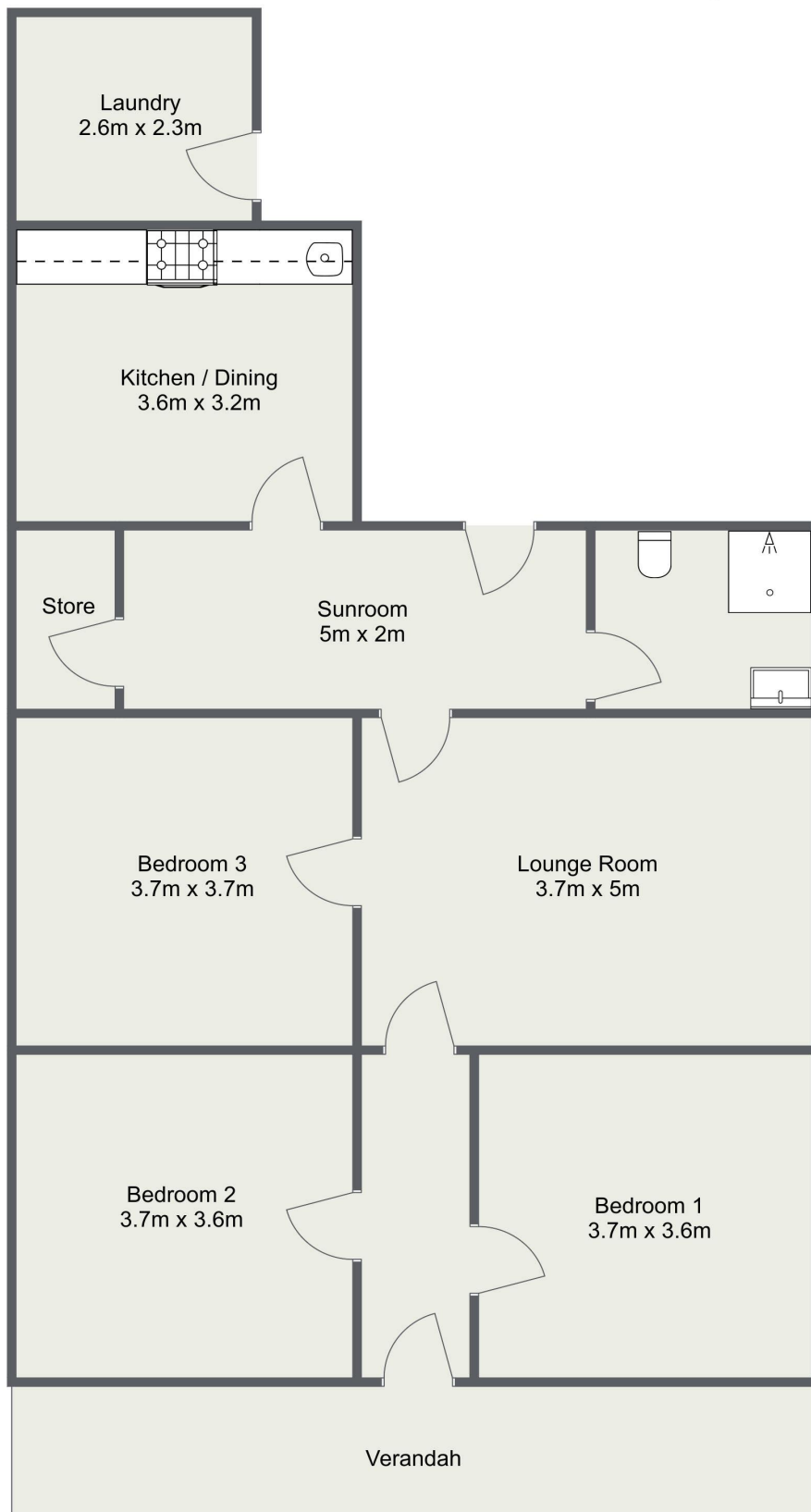
Jamie Giokaris 0418 201 028
Principal | jgiokaris@ljhlithgow.com.au

LJ Hooker Lithgow (02) 6351 2548
201 Main Street, LITHGOW NSW 2790
lithgow.ljhooker.com.au | enquiries@ljhlithgow.com.au



All information contained therein is gathered from relevant third parties sources.
We cannot guarantee or give any warranty about the information provided.
Interested parties must rely solely on their own enquiries.

6 Whitton Street, Lithgow



Please Note: The above dimensions are approximate and are intended to be used as a guide only.
Interested parties are urged to rely on their own enquiries.