



10 Albert Street, Lithgow

A Classic Full Brick Semi

Well positioned in the sporting hub of town and backing directly onto Conran Oval, this well kept semi is an excellent choice for an owner occupier or investor.


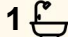

The home is generous in size for a semi, with 3 large bedrooms with built-in robes, a modern laminate kitchen with breakfast bar, corner pantry, and gas stove, formal lounge and dining rooms, and a modern main bathroom with handy second toilet. The home also has ducted gas central heating throughout, along with a covered front porch and a rear deck.

The 550 square metre block is level and there is rear lane access to a single garage.

A solid property in a great location.

- Mt Victoria Pass is temporarily closed, however Lithgow is still accessible from Sydney and the Blue Mountains via the Darling Causeway diversion from the Great Western Highway and alternatively the Bells Line of Road.

Allow an extra 20 minutes travel time.

3  1  1 

FOR SALE

Please Call

AGENTS

Jamie Giokaris
0418 201 028
jgiokaris@ljlithgow.com.au

Blake Edgell
0434 579 426
bedgell@ljlithgow.com.au

AGENCY

LJ Hooker Lithgow
(02) 6351 2548

All information contained therein is gathered from relevant third parties sources.
We cannot guarantee or give any warranty about the information provided.
Interested parties must rely solely on their own enquiries.

 **LJ Hooker**

MORE DETAILS

Property ID 1JMFF9X
Property Type DuplexSemi-detached
House Size 100 m2
Land Area 550 m2

Jamie Giokaris 0418 201 028

Principal | jgiokaris@ljhlithgow.com.au

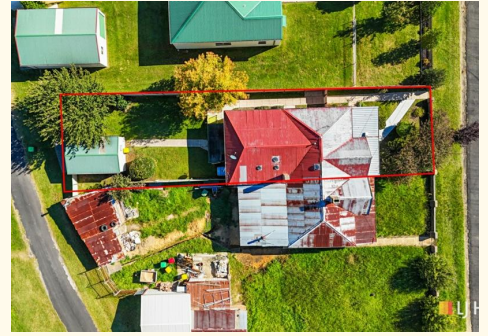
Blake Edgell 0434 579 426

Sales Agent | bedgell@ljhlithgow.com.au

LJ Hooker Lithgow (02) 6351 2548

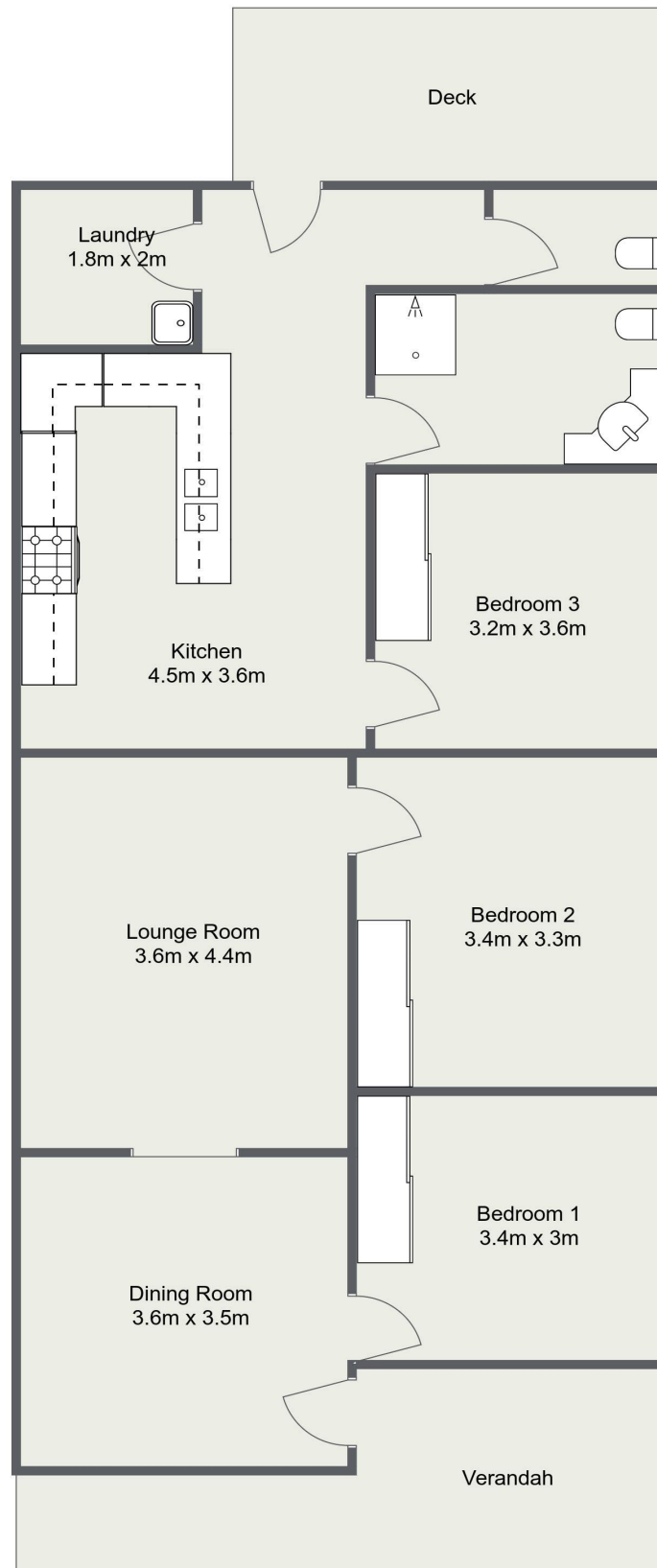
201 Main Street, LITHGOW NSW 2790

lithgow.ljhooker.com.au | enquiries@ljhlithgow.com.au



All information contained therein is gathered from relevant third parties sources.
We cannot guarantee or give any warranty about the information provided.
Interested parties must rely solely on their own enquiries.

10 Albert Street, Lithgow



Please Note: The above dimensions are approximate and are intended to be used as a guide only.
Interested parties are urged to rely on their own enquiries.