

Lismore Heights, 12/1 Gallagher Drive

Perfect First Home or Investment

Located on the Northern ridge of Lismore Heights with views to The Nightcap Ranges, this little gem at the end of the complex ensures peace and quiet. The unit has an open plan living, dining and kitchen area feeding out to the sunny northern deck. It includes two spacious bedrooms. The main with a large walk-in robe. The bathroom includes a shower and bath with a separate toilet. Two car parks are allocated to the unit with a storage locker big enough for pushbikes or other sporting equipment. The body corporate has a healthy sinking fund and managed by Strata North. A tenant is in place and will be happy to vacate once the unit is sold or possibly continue with a new agreement. This is a perfect first purchase or investment.

Do not delay, inspect today with exclusive agent, Robbie McRae.

- Great location, Short drive to The Lismore Square
- Northern aspect, Views to The Nightcap Ranges
- Two generous bedrooms, Walk in robe



For Sale
\$350,000 - \$380,000

View
By Appointment

Contact
Robbie McRae
0478 721 474
rmcrae.alstonville@ljhooker.com.au

LJ Hooker Alstonville
(02) 6628 1163

Disclaimer: All information contained therein is gathered from relevant third parties sources. We cannot guarantee or give any warranty about the information provided. Interested parties must rely solely on their own enquiries.

- Bath, Shower, Separate toilet
- Open plan living, dining and Kitchen, Large pantry
- Sunny northern deck, Two undercover car parks plus Storage

More About this Property

Property ID 16KCF55

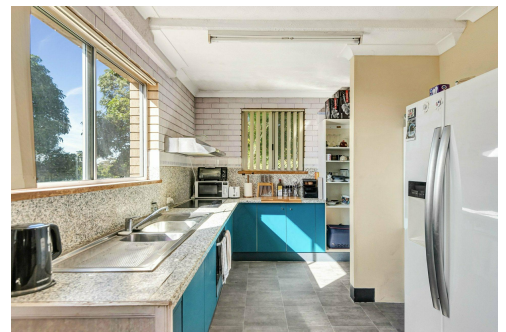
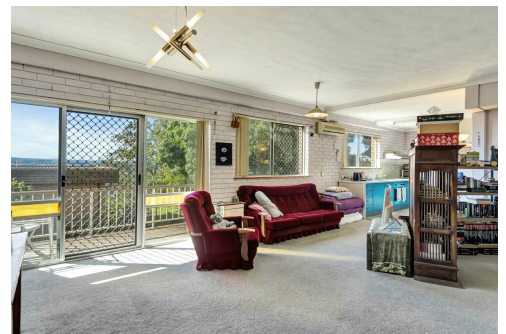
Property Type House

Robbie McRae 0478 721 474

Sales Consultant/Licensed Real Estate Agent |
rmcrae.alstonville@ljhooker.com.au

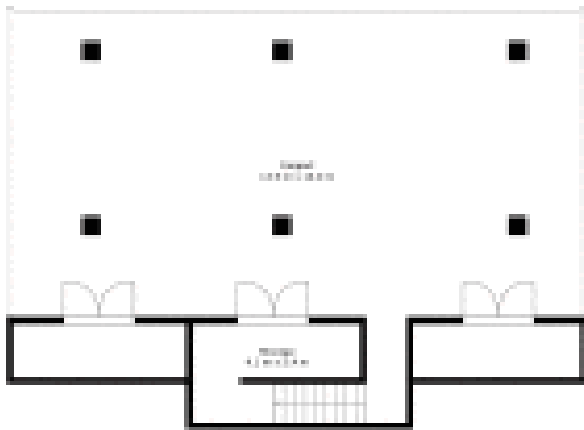
LJ Hooker Alstonville (02) 6628 1163

Shop 16 The Plaza, ALSTONVILLE NSW 2477
alstonville.ljhooker.com.au | alstonville@ljhooker.com.au



LJ Hooker Alstonville
(02) 6628 1163

Disclaimer: All information contained therein is gathered from relevant third parties sources.
We cannot guarantee or give any warranty about the information provided. Interested parties must rely solely on their own enquiries.



UNIT 12, 1 GALLAGHER DRIVE, LISMORE HEIGHTS

Disclaimer for illustrative purposes only. Floor plan measurements, size and scale are approximate. We take no responsibility for omissions and errors.



LJ Hooker Alstonville
(02) 6628 1163

Disclaimer: All information contained therein is gathered from relevant third parties sources. We cannot guarantee or give any warranty about the information provided. Interested parties must rely solely on their own enquiries.